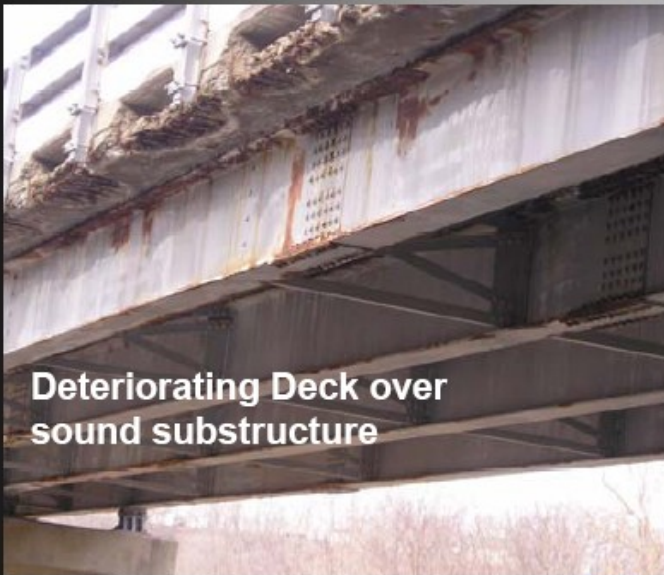


Osage Co. Rt. D



22' Roadway adjacent to project

Original Estimate: **\$1.8 M**
Redesign: **\$0.5 M**
Savings: **72%** **\$1.3 M**

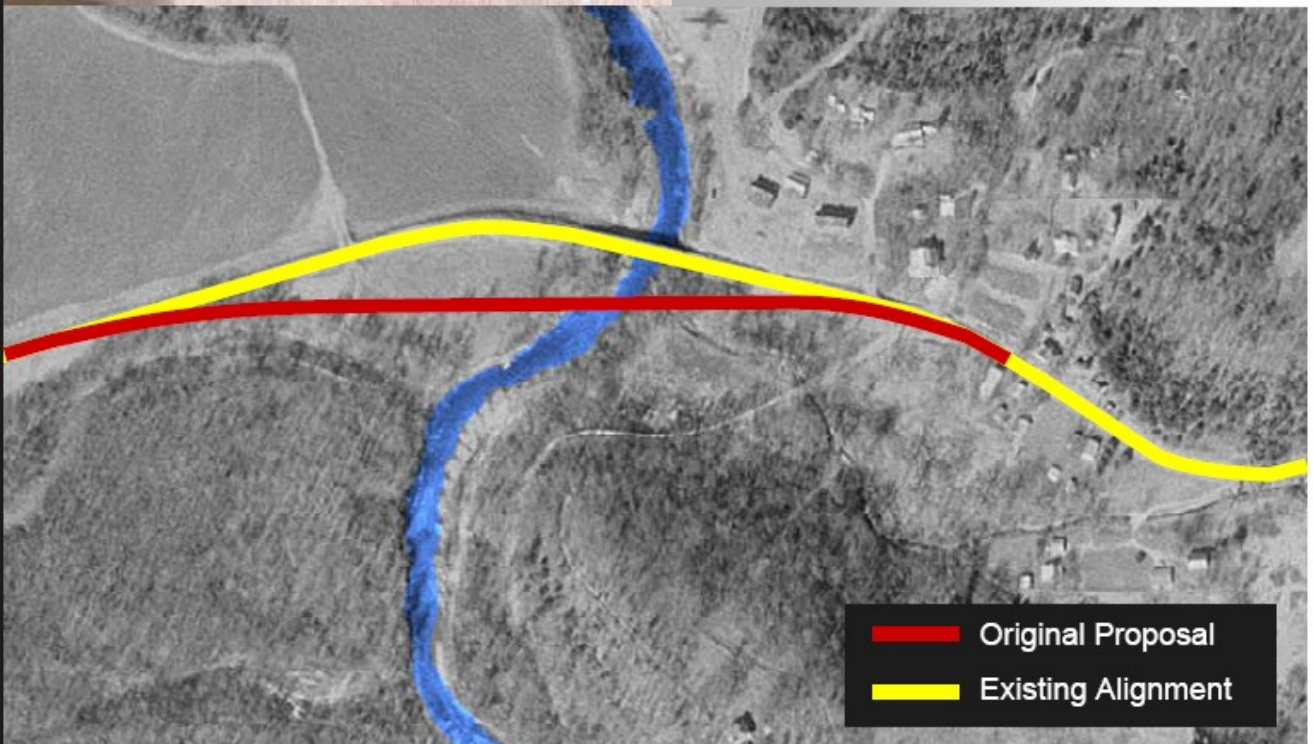


Deteriorating Deck over sound substructure

The bridge over Third Creek in Osage County Carries, on average, 170 vehicles per day. The adjacent roadway is 22 feet wide which, because of the low volumes, is sufficient to carry the traffic. The bridge had a condition three deck over a substructure rated condition six.

Initially, this bridge was scheduled for replacement with a wider bridge designed for a 100-year flood frequency. The project also called for the realignment of the highway to adjust some sharp curves and keep the road open during construction.

District 5 engineers realized the bridge was adequately serving its purpose of carrying traffic over Third Creek; it's only deficiency being a deteriorating deck. With this in mind, the scope of the project was changed from full replacement to re-decking only. The existing alignment was also retained with construction being facilitated through road closure.



— Original Proposal
— Existing Alignment