

### 616.12.3.5 Work Zone Speed Limit Location within a Land Closure on Two-Lane Road using Flaggers

SPEED Normal Posted (mph)	SIGN SPACING (ft.)		TAPER LENGTH (ft.)		OPTIONAL BUFFER LENGTH (ft.) (B)	CHANNELIZER SPACING (ft.)	
	Undivided (S)	Divided (S)	Shoulder (1) (T1)	Lane (2) (T2)		Tapers	Buffer/ Work Areas
0-35	200	-	<div style="background-color: yellow; padding: 5px;"> <b>This typical application provides guidelines for the sequencing and location of the work zone speed limit signs. Review appropriate typical applications for signs, sign spacing, taper length, buffer length, channelizer spacing, TMA's, channelizers, flags, rumble strips, lights, AWRS, etc.</b> </div>				
40-45	350	-					
50-55	500	-					
60-70	1000	-					

**NOTES:**

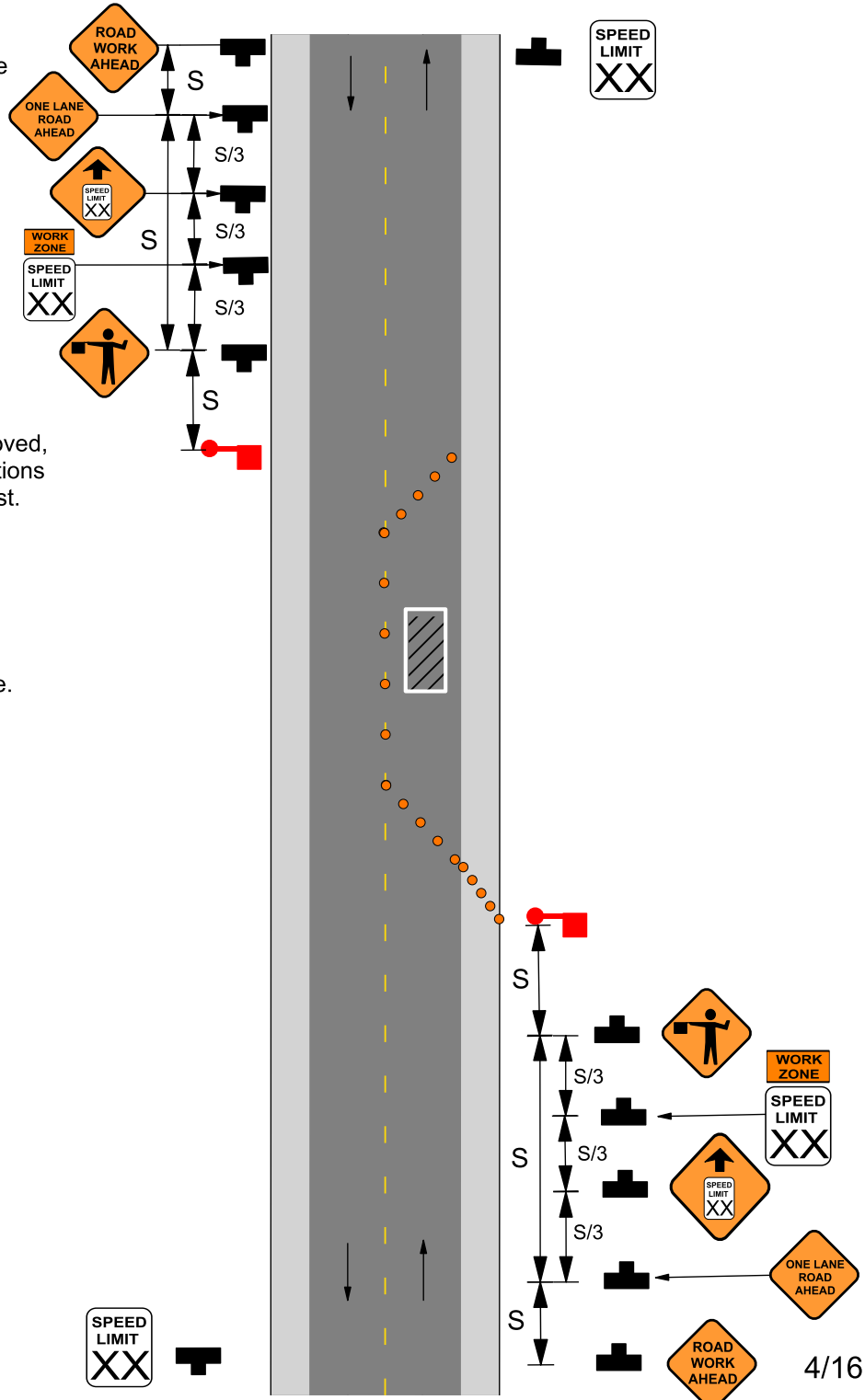
This typical application may be appropriate for automated flagger assistance devices (AFAD), portable signal flagging devices (PSFD), and traffic control signals.


SEE EPG 616.12 WORK ZONE SPEED LIMITS FOR SPEED LIMIT GUIDELINES.


(1) WO3-5 (SPEED LIMIT XX AHEAD). This sign is used when the approved speed reduction for an immediate location is greater than 10 mph below the existing or posted speed limit.


Reduced speed limit signing shall be removed, covered, or turned from traffic when conditions requiring the reduced speed no longer exist.

SPEED LIMIT signs indicating the normal speed limit should be installed at the end of the reduced area provided no other reduction is imposed within the next one-half mile or no existing SPEED LIMIT sign is located within the next one-half mile.



  
 R2-1

  
 GO20-5aP

  
 WO3-5