

DESIGN DESIGNATION
 A.A.D.T - XXXX = XXXX
 V = XX M.P.H

MISSOURI HIGHWAYS AND TRANSPORTATION COMMISSION

PLANS FOR PROPOSED STATE HIGHWAY

INDEX OF SHEETS

DESCRIPTION	SHEET NUMBER
TITLE SHEET -----	1
TYPICAL SECTIONS (TS) (1 SHEET)-----	2
QUANTITIES (QU) (1 SHEET)-----	3
TRAFFIC CONTROL (TC)(4 SHEETS)-----	4-7

"THIS MEDIA SHOULD NOT BE CONSIDERED A CERTIFIED DOCUMENT."

DATE PREPARED
5/4/2017

ROUTE	STATE
	MO
DISTRICT	SHEET NO.
	1

COUNTY

JOB NO.

CONTRACT ID.

PROJECT NO.

BRIDGE NO.

DATE	DESCRIPTION

LENGTH OF PROJECT

BEGINNING OF PROJECT _____

END OF PROJECT _____

APPARENT LENGTH _____ MILES

EQUATIONS AND EXCEPTIONS:

TOTAL CORRECTIONS _____

NET LENGTH OF PROJECT _____

STATE LENGTH _____

MISSOURI HIGHWAYS AND TRANSPORTATION COMMISSION

105 WEST CAPITOL
JEFFERSON CITY, MO 65102
1-888-ASK-MODOT (1-888-275-6636)

IF A SEAL IS PRESENT ON THIS SHEET IT HAS BEEN ELECTRONICALLY SEALED AND DATED.

"THIS MEDIA SHOULD NOT BE CONSIDERED A CERTIFIED DOCUMENT."

DATE PREPARED
5/4/2017

ROUTE	STATE
	MO

DISTRICT	SHEET NO.
	2

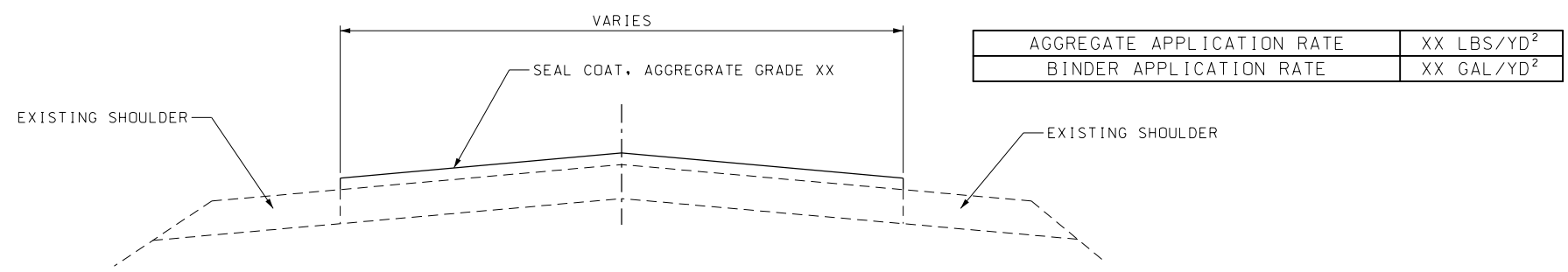
COUNTY

JOB NO.

CONTRACT ID.

PROJECT NO.

BRIDGE NO.




TYPICAL SECTION

STRIPING TO BE COMPLETED BY OTHERS.
NOTIFY ENGINEER TWO WEEKS PRIOR TO PROJECT COMPLETION

DATE	DESCRIPTION

MISSOURI HIGHWAYS AND TRANSPORTATION COMMISSION

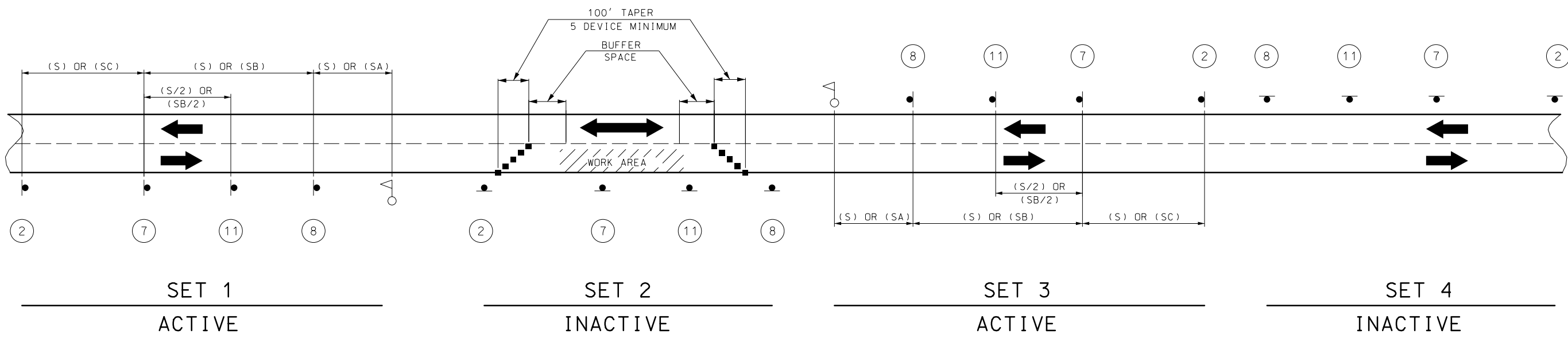
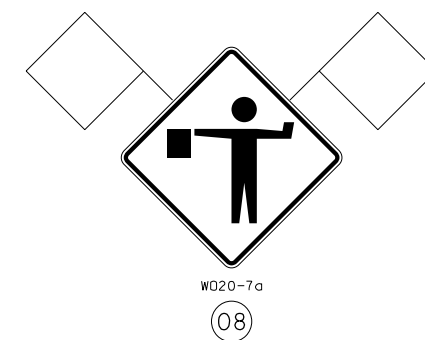


105 WEST CAPITOL
JEFFERSON CITY, MO 65102
1-888-ASK-MODOT (1-888-275-6636)

IF A SEAL IS PRESENT ON THIS SHEET IT HAS BEEN ELECTRONICALLY SEALED AND DATED.



SIGN 53, "PILOT CAR FOLLOW ME" SHALL BE IN CONTRACTOR'S RESPONSIBILITY WHEN IN USE DURING OPERATION.



SIGN SETS 1 AND 3 ARE ACTIVE AND (I.E., SIGNS FACE ONCOMING TRAFFIC).

SIGN SETS 2 AND 4 ARE INACTIVE (I.E., SIGNS DO NOT FACE EITHER DIRECTION OF TRAFFIC) WHEN THE RESURFACING OPERATION IS LOCATED BETWEEN SIGN SETS 1 AND 3.

WHEN SIGN SETS 2 AND 4 ARE ACTIVE, SIGN SETS 1 AND 3 BECOME INACTIVE AND ARE ADVANCED TO BECOME SETS 2 AND 4 WITH SIGN LEGENDS TURNED AWAY FROM BOTH DIRECTIONS OF TRAFFIC. WHEN THE RESURFACING OPERATION ADVANCES TO BETWEEN SIGN SETS 2 AND 4, SIGN SETS 2 AND 4 BECOME ACTIVE (I.E., NEW SIGN SETS 1 AND 3) AND SIGN SETS 1 AND 3 ADVANCED IN THE DIRECTION OF THE OPERATION (I.E., NEW SIGN SETS 2 AND 4).

- - CHANNELIZERS
- - FLAGGER

NOTES:
 DAYLIGHT FLAGGING OPERATIONS ONLY.
 FLAG ASSEMBLIES FOR SIGNS WILL BE PAID FOR AS EACH PER SIGN, EXCEPT FOR SIGN W020-7a WHICH IS SUBSIDIARY TO THE SIGN.

SPEED	SIGN SPACING (FT.) (1)	
	NON-DIVIDED HIGHWAYS (S)	DIVIDED HIGHWAYS (S)
0-35	200	200
40-45	350	500
50-55	500	1000
60-70	1000	(SA)-1000 (SB)-1500 (SC)-2640

PERMANENT POSTED SPEED LIMIT (MPH)	BUFFER SPACE LENGTH (FT)
0 - 35	280
40 - 45	400
50 - 55	560
60 - 70	840

- NOTES:
- (1) SPACING BETWEEN SIGNS, BETWEEN LAST SIGN AND FLAGGER, BEGINNING OF TAPER OR SIGNED CONDITION.
 SPACINGS MAY BE ADJUSTED AS NECESSARY TO MEET FIELD CONDITIONS.
 - (2) SIGN MANDATORY WHEN TEMPORARY ROAD CLOSURE IS NEEDED. FOR TEMPORARY ROAD CLOSURE BOTH DIRECTIONS MAY BE STOPPED AT THE SAME TIME UP TO A MAXIMUM OF 20 MINUTES.

TRAFFIC CONTROL FOR
 SEAL COAT AGGREGATE
 APPLICATION
 SHEET 2 OF 4

"THIS MEDIA SHOULD NOT BE CONSIDERED A CERTIFIED DOCUMENT."
 DATE PREPARED: 5/4/2017
 ROUTE: STATE MO
 DISTRICT: SHEET NO. 5
 COUNTY:
 JOB NO.:
 CONTRACT ID.:
 PROJECT NO.:
 BRIDGE NO.:
 DESCRIPTION:
 DATE:
 MISSOURI HIGHWAYS AND TRANSPORTATION COMMISSION
 105 WEST CAPITOL JEFFERSON CITY, MO 65102
 1-888-ASK-MODOT (1-888-275-6636)
 IF A SEAL IS PRESENT ON THIS SHEET IT HAS BEEN ELECTRONICALLY SEALED AND DATED.
 REV.

