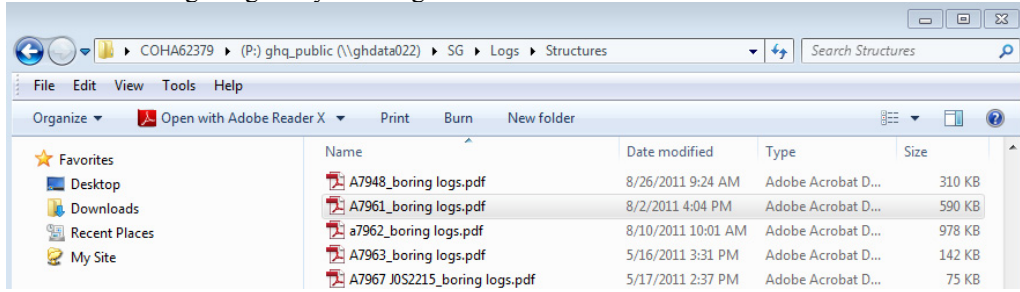



Attaching Boring Log PDFs to Final Bridge Plans

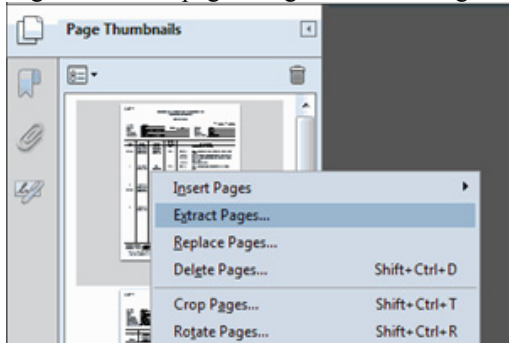
Locate the Borings Logs for your bridge on the P drive as shown below.



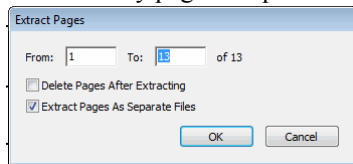
Open your boring log in Adobe Acrobat Professional.

Display Page Thumbnails by selecting the  icon.

Right click on a page and go to Extract Pages...



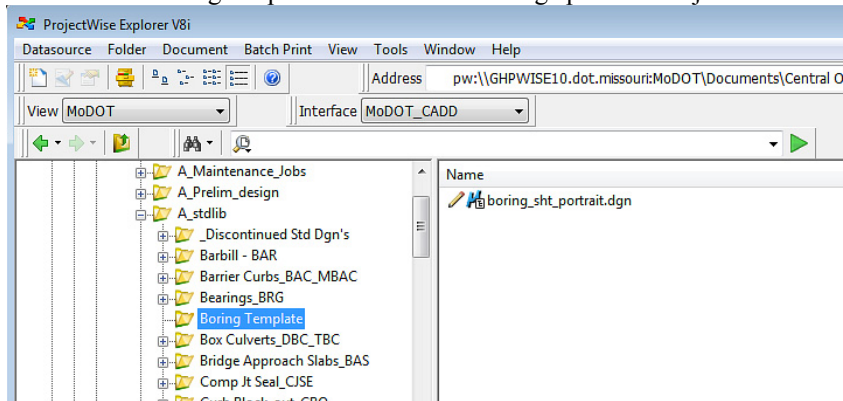
Extract every page to separate files by selecting Extract Pages as Separate Files.




Save the individual PDF files under your directory on the J drive.

Go to your directory on the J drive, highlight all of the PDF files for the boring log to your bridge and import them into the directory which contains the drawing files for your bridge.

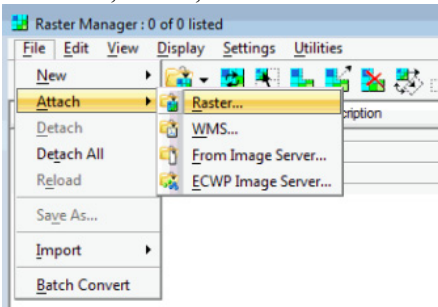
You can find boring template sheets for final bridge plans in Projectwise:\Bridge\A_stdlib\Boring Template as shown below.



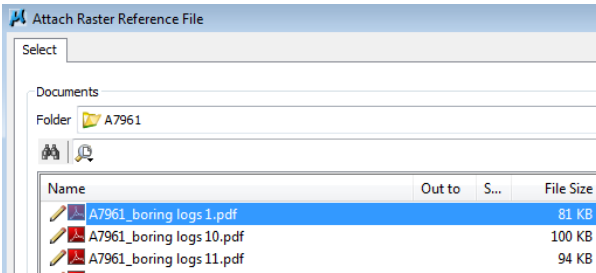
There is a MicroStation template set up for portrait files. You can attach two PDF files to the portrait drawing.

Open the MicroStation template, open the Raster Manager. 

Go to File, Attach, Raster...

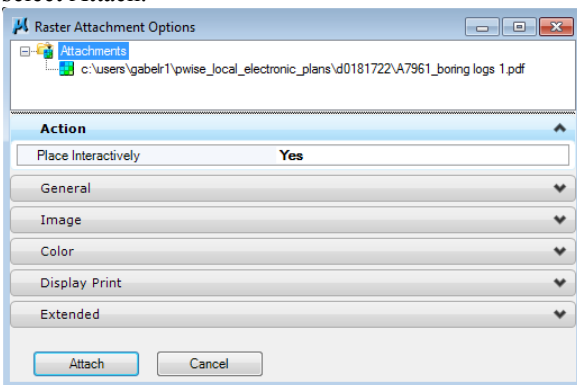


Select PDF file to be attached as a Raster Image, you can select multiple files at once, they will be placed in the order in which they were selected.



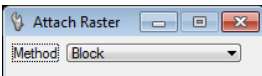
You can click the Add button or just double click the file or files you need to attach in the order in which you want to place them. Select OK.

The Raster Attachment Options dialog box will come up. Expand the Action tab and set Place Interactively to Yes. As long as you have Attachments selected as shown below it will apply to all PDF files being attached. Once the Place Interactively is set to Yes, select Attach.



For the sheets in the portrait orientation:

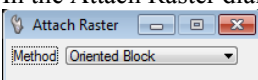
In the Attach Raster dialog box, set the Method to Block.



To place the PDF Raster Image, first select the bottom left corner, and then select the top right corner of the boring frame on the MicroStation template.

For the sheets in the landscape orientation:

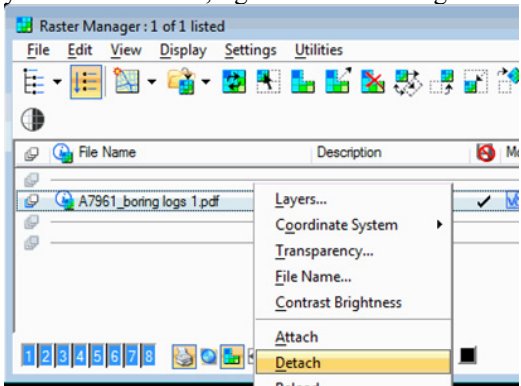
In the Attach Raster dialog box, set the Method to Oriented Block.



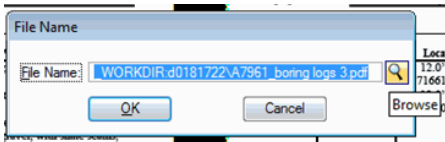
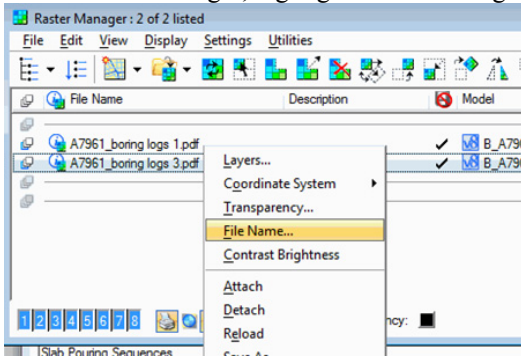
To place the PDF Raster Image, first select the bottom right corner, and then select the top right corner of the boring frame on the MicroStation template to set the orientation. Once the orientation is set select the top left corner.

Once you have the first MicroStation file complete and saved, you can do a Save As... and save it to the next MicroStation file and replace the PDF images as needed. Once you have the done so, follow step below to replace the PDF images.

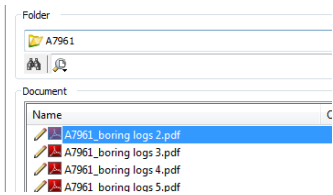
You cannot replace a sheet in the portrait orientation with a sheet in the landscape orientation and vice versa. You will need to detach the portrait PDF image and attach the landscape PDF image. To detach, in the Raster Manager, highlight the PDF image you need to detach, right click on it and go to File Name...



In the Raster Manager, highlight the PDF image you need to replace, right click on it and go to File Name...



Select the Browse icon (🔍) and select the file which you are replacing the existing file with and select Open or you can double click on the file name.



Select OK. The PDF image has been replaced.

