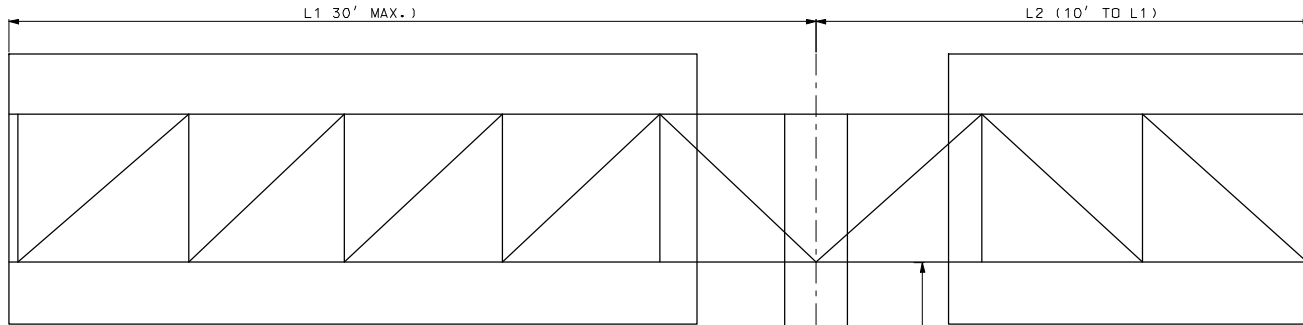


## Column Design Table For Pay Item 903.12 Butterfly Sign Trusses



REQUIRED COLUMN TYPE				
COLUMN HEIGHT* FT.	L1 (FT.)			
	15	20	25	30
12	III	V	V	VI
14	III	V	V	VI
16	IV	V	VI	VI
18	V	V	VI	VII
20	V	V	VI	VII
22	V	VI	VII	VII
24	V	VI	VII	VIII
26	V	VI	VII	VIII

\* FOR COLUMN LENGTHS FALLING BETWEEN INCREMENTS SHOWN, USE THE COLUMN DESIGN FOR THE NEXT GREATER LENGTH.

ARM LENGTH (1) FT.	MAX SIGN AREA (2) FT. <sup>2</sup>
15	200
20	265
25	330
30	400

- (1) FOR ARM LENGTHS FALLING BETWEEN INCREMENTS SHOWN, USE THE MAX SIGN AREA FOR THE NEXT GREATER LENGTH.  
 (2) SIGN AREAS SHOWN ARE PER FACE AND PER ARM, IF SIGNS ARE LOCATED ON BOTH FACES OF THE TRUSS, TOTAL SIGN AREA PER ARM CAN BE DOUBLE THE VALUE SHOWN.

### EXAMPLE:

SIGN NO. 18 (FROM FIGURE 903.3.5)  
 -L1 = 13'-0" L2 = 13'-0" = L1, OK  
 -COLUMN HT. = 15'-2" REQUIRED COLUMN TYPE (FROM TABLE) = IV  
 -MAX SIGN AREA PER FACE (FROM TABLE) = 200 FT<sup>2</sup>  
 -SIGNS LOCATED ON BOTH FACES, BOTH ARMS:  
   -FRONT FACE AREA = 208 FT<sup>2</sup>, PER ARM = 104 FT<sup>2</sup> < 200, OK  
   -BACK FACE AREA = 176 FT<sup>2</sup>, PER ARM = 88 FT<sup>2</sup> < 200, OK

### NOTES:

1. THIS SHEET PROVIDES THE INFORMATION NECESSARY TO COMPLETE THE DATA SHEET (D-32) AND SHALL NOT BE INCLUDED IN DESIGN PLANS.
2. SEE THE LATEST REVISION OF STANDARD PLAN 903.12.
3. COLUMN LENGTHS ARE NORMALLY SPECIFIED IN 1 INCH INCREMENTS. ARM LENGTHS ARE NORMALLY SPECIFIED IN 6 INCH INCREMENTS. IF SPECIAL SITUATIONS REQUIRE, COLUMNS AND ARMS CAN BE SPECIFIED IN ANY INCREMENT NEEDED.

Figure 903.3.5.3