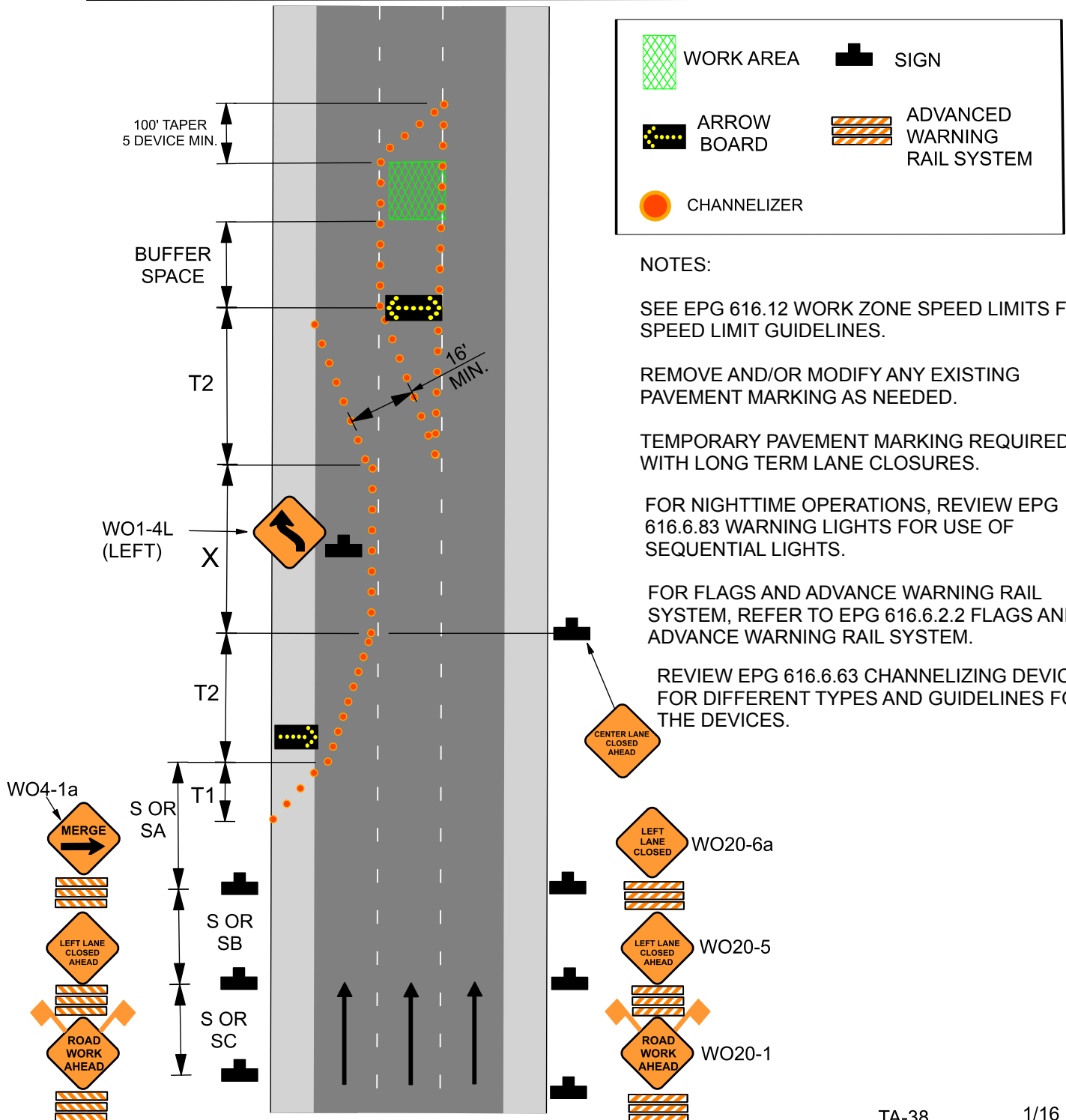


616.8.38 (TA-38) Interior Lane Closure on a Freeway - DE/CM

SPEED	SIGN SPACING (ft.)		TAPER LENGTH (ft.)		OPTIONAL	CHANNELIZER SPACING (ft.)	
	Undivided (S)	Divided (S)	Shoulder (1) (T1)	Lane (2) (T2)	BUFFER LENGTH (ft.) (B)	Tapers	Buffer/ Work Areas
0-35	-	200	70	245	280	35	40
40-45	-	500	150	540	400	40	80
50-55	-	1000	185	660	560	50	80
60-70	-	SA - 1000 SB - 1500 SC - 2640	235	840	840	60	120

1 Shoulder taper length based on 10 ft. (standard shoulder width) offset. 2. Lane taper length based on 12 ft. (standard lane width) offset.



WORK AREA (Green hatched box)

SIGN (Black T-shaped symbol)

ARROW BOARD (Black box with yellow dots)

ADVANCED WARNING RAIL SYSTEM (Orange and white striped box)

CHANNELIZER (Orange circle)

NOTES:

SEE EPG 616.12 WORK ZONE SPEED LIMITS FOR SPEED LIMIT GUIDELINES.

REMOVE AND/OR MODIFY ANY EXISTING PAVEMENT MARKING AS NEEDED.

TEMPORARY PAVEMENT MARKING REQUIRED WITH LONG TERM LANE CLOSURES.

FOR NIGHTTIME OPERATIONS, REVIEW EPG 616.6.83 WARNING LIGHTS FOR USE OF SEQUENTIAL LIGHTS.

FOR FLAGS AND ADVANCE WARNING RAIL SYSTEM, REFER TO EPG 616.6.2.2 FLAGS AND ADVANCE WARNING RAIL SYSTEM.

REVIEW EPG 616.6.63 CHANNELIZING DEVICES FOR DIFFERENT TYPES AND GUIDELINES FOR THE DEVICES.