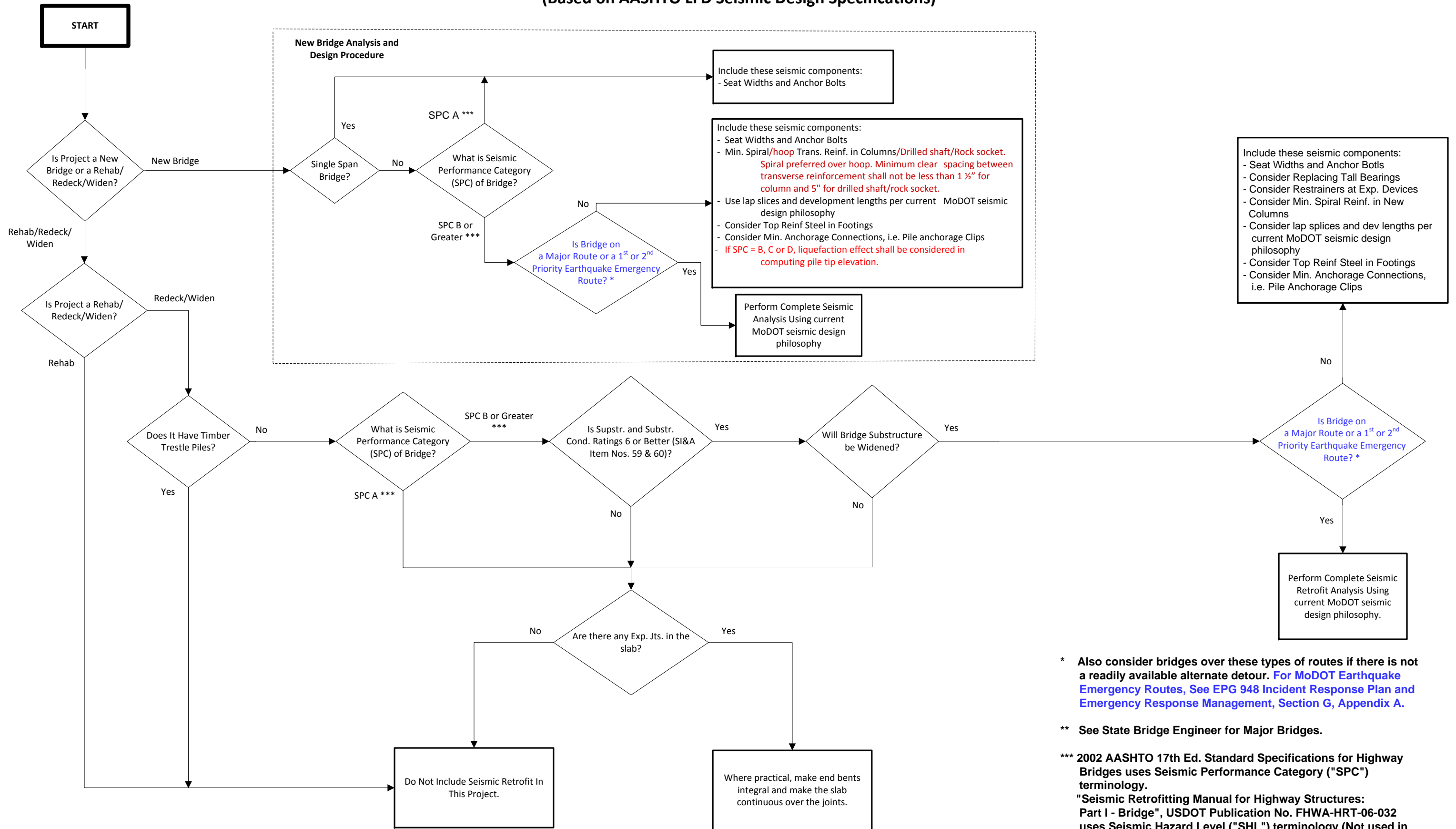


Bridge Seismic Design Process
(does not include Major Bridges) **
December 12, 2016
(Based on AASHTO LFD Seismic Design Specifications)



* Also consider bridges over these types of routes if there is not a readily available alternate detour. For MoDOT Earthquake Emergency Routes, See EPG 948 Incident Response Plan and Emergency Response Management, Section G, Appendix A.

** See State Bridge Engineer for Major Bridges.

*** 2002 AASHTO 17th Ed. Standard Specifications for Highway Bridges uses Seismic Performance Category ("SPC") terminology. "Seismic Retrofitting Manual for Highway Structures: Part I - Bridge", USDOT Publication No. FHWA-HRT-06-032 uses Seismic Hazard Level ("SHL") terminology (Not used in flowchart).