

MAINTENANCE PLANNING GUIDELINES		2006																																																
ACTIVITY: Pavement Preventative Maintenance (R315) MAJOR & MINOR	ACTION: Crack & Joint Maintenance <i>A. Sealing Cracks, Joints, & Edge Cracks</i>																																																	
DEFINITION: The time and expenses incurred for the application of preventative maintenance treatments to pavements. This includes fly coating, crack and joint maintenance and scrub seals.																																																		
PURPOSE: To fill joints and random cracks 1/8-in. and wider to keep out water and reduce deterioration.																																																		
SCHEDULING: Schedule when temperatures are between 30°F-50°F, but may be done any time of year depending on material used.	<table border="1" style="width: 100%; text-align: center; border-collapse: collapse;"> <tr> <td>J</td><td>F</td><td>M</td><td>A</td><td>M</td><td>J</td><td>J</td><td>A</td><td>S</td><td>O</td><td>N</td><td>D</td> </tr> <tr> <td>A</td><td>E</td><td>A</td><td>P</td><td>A</td><td>U</td><td>U</td><td>U</td><td>E</td><td>C</td><td>O</td><td>E</td> </tr> <tr> <td>N</td><td>B</td><td>R</td><td>R</td><td>Y</td><td>N</td><td>L</td><td>G</td><td>P</td><td>T</td><td>V</td><td>C</td> </tr> <tr> <td style="background-color: black;"></td><td style="background-color: black;"></td><td style="background-color: black;"></td><td style="background-color: black;"></td><td style="background-color: black;"></td><td style="background-color: black;"></td><td style="background-color: black;"></td><td style="background-color: black;"></td><td style="background-color: black;"></td><td style="background-color: black;"></td><td style="background-color: black;"></td><td style="background-color: black;"></td> </tr> </table>		J	F	M	A	M	J	J	A	S	O	N	D	A	E	A	P	A	U	U	U	E	C	O	E	N	B	R	R	Y	N	L	G	P	T	V	C												
	J	F	M	A	M	J	J	A	S	O	N	D																																						
A	E	A	P	A	U	U	U	E	C	O	E																																							
N	B	R	R	Y	N	L	G	P	T	V	C																																							
RECOMMENDED EQUIPMENT: <ul style="list-style-type: none"> • Truck or Trailer Distributor • Air Compressors • Router • Heat Lance • Dump Trucks • Protective Truck • Melter Applicator • Traffic Control Equipment; (See EPG 616.23 Traffic Control for Field Operations) 	RECOMMENDED PROCEDURE: <ol style="list-style-type: none"> 1. Place traffic control devices as required. 2. Blow loose debris from the crack or joint with compressed air or hot air lance. 3. Rout (if available) and dry cracks as needed. 4. Pour asphalt in cracks to a maximum width of two inches. Extreme care should be taken to avoid covering permanent striping. 5. Blot asphalt as needed. 6. Remove traffic control devices. 																																																	
RECOMMENDED MATERIAL: <ul style="list-style-type: none"> • Liquid Asphalt • RC-800, EA-150, CRS-2, CRS-2P • Blotting Material – Sand, Sawdust, or Cinders • Melter Material 																																																		
SAFETY: Keep safe distance between protective truck and crew. Eye protection is recommended for crewmembers. Wear all appropriate PPE. Refer to the Safety Policies, Rules & Regulations – Employee Handbook . and Material Safety Data Sheets (MSDS).																																																		
OTHER CONSIDERATIONS: N/A																																																		
REFERENCES: Missouri Standard Specifications for Highway Construction Sections 413.50 , 413.60 , 1015 , 1057 .																																																		

R315 Crack & Joint Maintenance (A. Sealing Cracks and Joints)



(1) Joint prior to work



(2) Crew blowing out joints with heat & air



(3) Crew blowing out joints with heat & air



(4) Joint after being cleaned out



(5) Crew filling joint

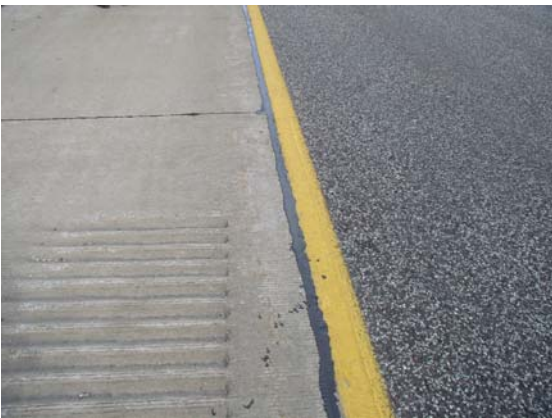


(7) Close up of wand filling the joint

(6) Crew filling joint



(8) Completed joints after filling:



(9) Completed joints after filling: