

WORK AREA

PROTECTIVE TRUCK WITH WORK SIGN,
FLASHING ARROW PANEL AND TRUCK
MOUNTED ATTENUATOR.

NOTES:

SEE FIGURE 616.1.2 FOR SIGN SPACING.

FLASHING ARROW PANELS SHALL BE OPERATED
IN CAUTION MODE.

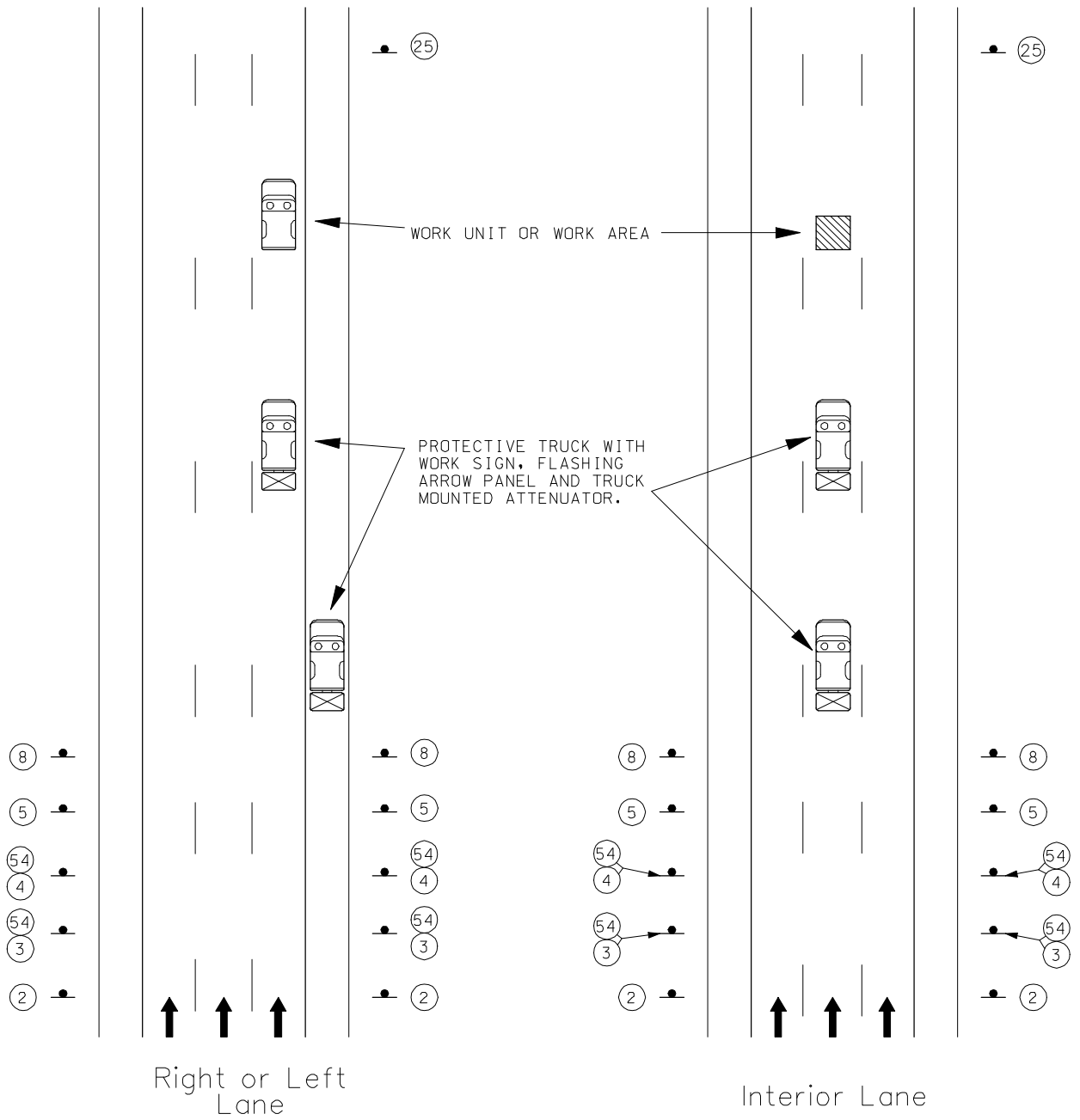
UPON APPROVAL OF THE ENGINEER, THE CON-
TRACTOR MAY PROVIDE ADDITIONAL PROTECTIVE
TRUCKS EQUIPPED WITH PROPER WARNING
DEVICES.

THE FLAGGER POSITION SHOULD BE LOCATED
WHERE THEY WILL PROVIDE THE MOST VALUE
TO THE MOTORIST AND THE WORK CREW.

FOR SHORT DISTANCE LANE CLOSURES, ONE
FLAGGER MAY BE SUFFICIENT IF THERE IS
ADEQUATE SIGHT DISTANCE FOR THE PROPER
HANDLING OF TRAFFIC.

Two-Lane Undivided Highway
Moving Operation On Highway Open To Traffic

Figure 616.0.10



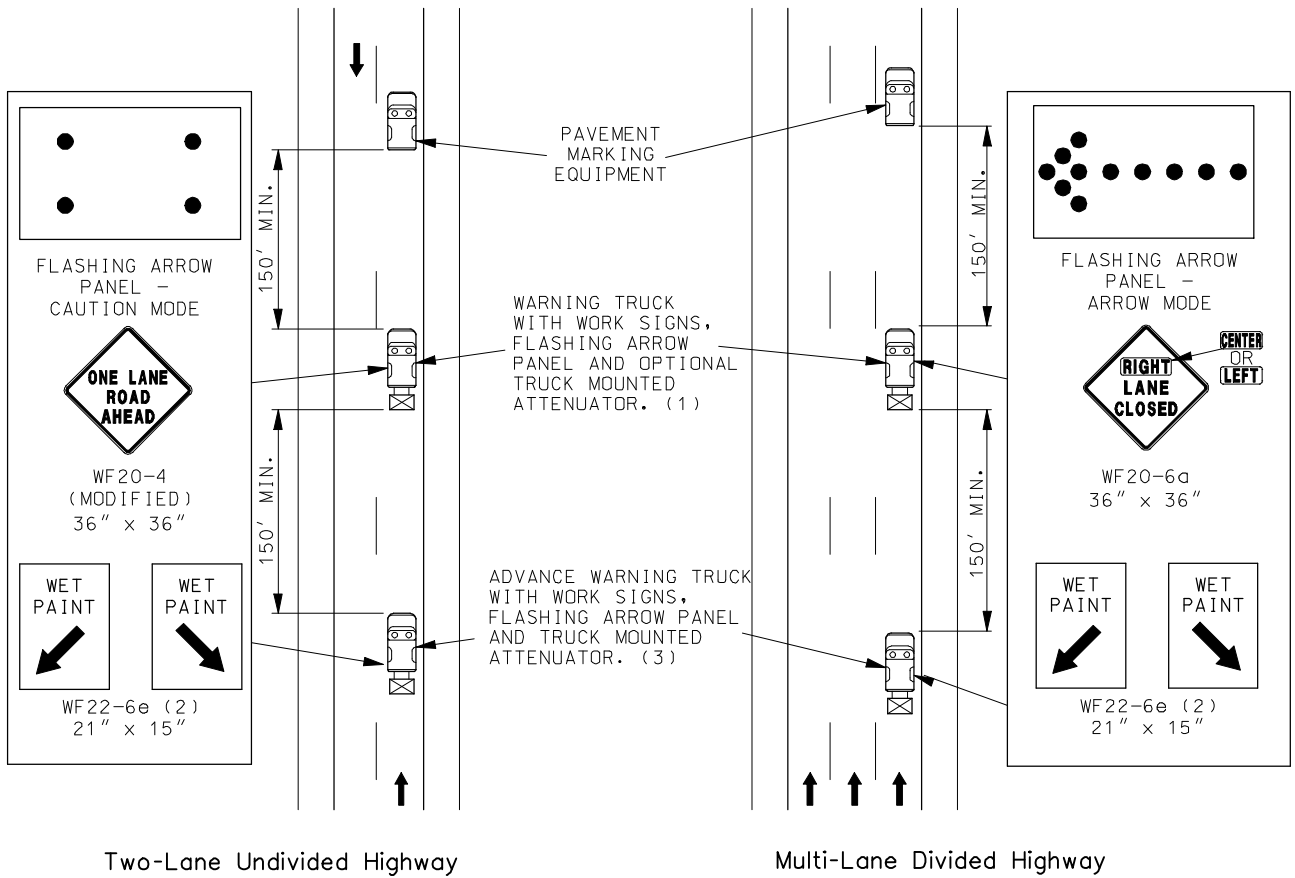
NOTES:

SEE FIGURE 616.1.2 FOR SIGN SPACING.

THE FLAGGER WHEN USED, SHOULD BE LOCATED WHERE THEY WILL PROVIDE THE MOST VALUE TO THE MOTORIST AND THE WORK CREW.

IF THE FLAGGER IS NOT USED, THE ADVANCED FLAGGER SIGN SHOULD BE DELETED.

Multi-Lane Undivided Highway
Moving Operation On Highway Open To Traffic



NOTES:

ALL SIGNS HAVE TYPE 3 FLUORESCENT ORANGE RETROREFLECTIVE SHEETING.

- (1) TRUCK IS OPTIONAL ON TWO-LANE UNDIVIDED HIGHWAYS IF SIGNING AND ARROW BOARD IS MOUNTED ON THE PAVEMENT MARKING EQUIPMENT.
- (2) WET PAINT SIGNS ARE INSTALLED TO INDICATE THE SIDE IN WHICH THE PAVEMENT MARKING MATERIAL IS BEING APPLIED. AT THE CONTRACTOR'S OPTION, A FRONT FACING WET PAINT SIGN MAY BE INSTALLED ON THE LEFT SIDE OF THE PAVEMENT MARKING EQUIPMENT.
- (3) ADVANCE WARNING TRUCK IS POSITIONED AT THE NO TRACK POINT OF THE PAVEMENT MARKING MATERIAL OR SPACING SHOWN, WHICHEVER IS GREATER.

Pavement Marking
Moving Operation On Highway Open To Traffic