



Quality Standards for Temporary Traffic Control Devices

Device Condition

This field guide highlights a few of the commonly observed non-compliance items. Contractors are responsible to know and follow all standards as documented in the plans, specifications, MoDOT standards, industry standards, and the guidance from MoDOT staff. Unacceptable device placement/practices identified by MoDOT staff shall be corrected.

THE CONTRACTOR SHALL FOLLOW ALL MODOT STANDARDS AND SPECIFICATIONS. SEE SHEET 2 OF 2 FOR LIST OF MODOT STANDARDS AND GUIDELINES.

SIGNING

(Including sheeting on Barricade Panels/Paddles)

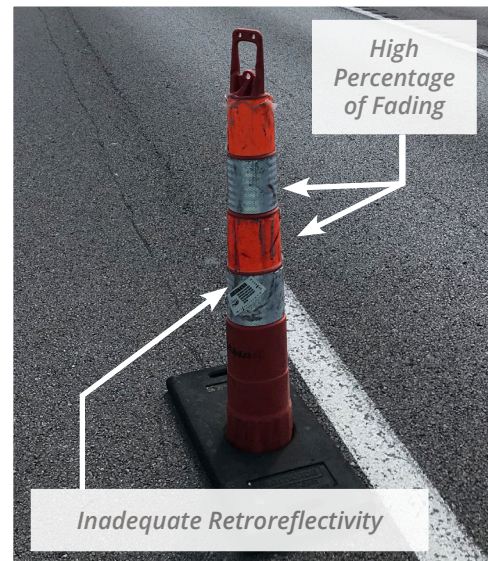


UNACCEPTABLE CONDITION

CONTAINS ANY OF THE FOLLOWING:

- Color fading or surface abrasions
- 25% or more deterioration of any letter/border/symbol day or night
- Bent/deformed from original size
- Debris/rust/residue
- Inadequate retroreflectivity per MUTCD

CHANNELIZERS



UNACCEPTABLE CONDITION

CONTAINS ANY OF THE FOLLOWING:

- Numerous scratches or tears
- 25% or more area with residue, fading, or inadequate/missing retroreflectivity
- Denting that affects overall dimensions or device stability



Any work zone device in unacceptable condition is subject to removal if directed by MoDOT staff.

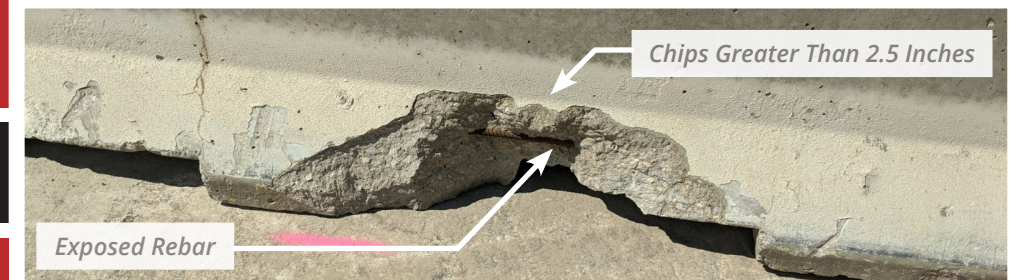
Rejected devices must be removed and replaced as directed by MoDOT staff (see MoDOT Standard Specifications 616.4.2.5).

ARROW BOARDS, WARNING LIGHTS, & CHANGEABLE MESSAGE SIGNS (CMS)

DEVICE	UNACCEPTABLE CONTAINS ANY OF THE FOLLOWING NUMBER OF LIGHTS DIMMED, DAMAGED, OR FAILING:
Arrow Boards	<ul style="list-style-type: none"> • 2 or more lights shall be corrected within one hour (Category 1 Deficiency) • Up to one total light shall be corrected within 96 hours (Category 3 Deficiency)
A, B, C, and Sequential Warning Lights	<ul style="list-style-type: none"> • 10% or more shall be corrected within one hour (Category 1 Deficiency) • Two lights up to 10% shall be corrected within 24 hours (Category 2 Deficiency) • Up to one total light shall be corrected within 96 hours (Category 3 Deficiency)
Changeable Message Signs (CMS)	<ul style="list-style-type: none"> • 10% or more lights per character/symbol shall be corrected within one hour (Category 1 Deficiency) • Two lights up to 10% per character/symbol shall be corrected within 24 hours (Category 2 Deficiency) • Up to one total light shall be corrected within 96 hours (Category 3 Deficiency)

See Missouri Standard Specifications for Highway Construction for additional requirements.

CONCRETE BARRIERS



UNACCEPTABLE CONDITION

CONTAINS ANY OF THE FOLLOWING:

- Spalls, chips, or delamination between 1.5" and 2.5" that have not been adequately repaired
- Spalls, chips, or delamination greater than 2.5" or other defects that are deemed structurally unsound
- Damaged connection loops
- Contains snag points potentially causing vehicle damage



Quality Standards for Temporary Traffic Control Devices

Device Placement and Practices

This field guide highlights a few of the commonly observed non-compliance items. Contractors are responsible to know and follow all standards as documented in the plans, specifications, MoDOT standards, industry standards, and the guidance from MoDOT staff. Unacceptable device placement/practices identified by MoDOT staff shall be corrected.

The following general requirements apply to all devices:

- *Unobstructed* by vegetation or any other material.
- *Visible* from a safe approaching distance as defined by plans, standards, and MoDOT approval.
- *Placed* according to plans, standards, and MoDOT approval.

SIGNING

MODOT STANDARD

- Signs shall not obstruct adjacent lanes or pathways with motorized/non-motorized traffic.
- Unused signs shall be removed, covered, or otherwise not displayed.

MODOT STANDARDS AND SPECIFICATIONS:



Missouri Standard Specifications for Highway Construction
<https://www.modot.org/missouri-standard-specifications-highway-construction>



Missouri Standard Plans for Highway Construction
<https://www.modot.org/missouri-standard-plans-highway-construction>



End Terminals, Crash Cushions and Barrier Systems
<https://www.modot.org/end-terminals-crash-cushions-and-barrier-systems>

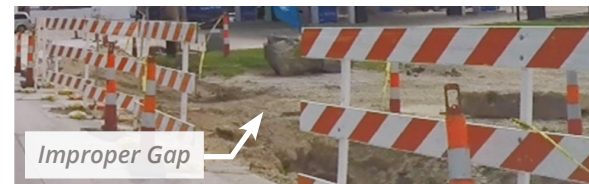
MoDOT EPG Section 616.19 - Quality Standards for Temporary Traffic Control Devices
https://epg.modot.org/index.php/616.19_Quality_Standards_for_Temporary_Traffic_Control_Devices



BARRICADES



ACCEPTABLE

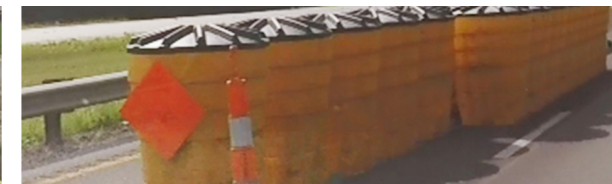


UNACCEPTABLE

MODOT STANDARD

- One barricade for every eight feet of pavement
- Vehicles should not be parked in front of barricades or within the recommended buffer space (See Table 616.3.6 of the EPG)
- Openings shall only be allowed for trucks entering/leaving for a maximum of ten minutes

END TREATMENTS



ACCEPTABLE



UNACCEPTABLE

MODOT STANDARD

- Shall be maintained throughout the duration of the work zone
- Shall be aligned correctly according to all manufacturer's recommendations considering speed and other contributing factors

PERSONAL PROTECTIVE EQUIPMENT (PPE)



ACCEPTABLE



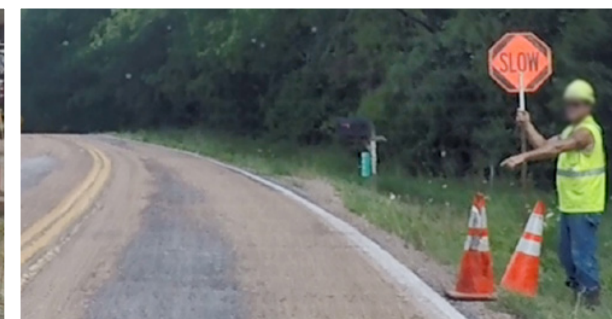
UNACCEPTABLE

Fading/Residue

MODOT STANDARD

- MoDOT safety policies must be practiced at all times, including wearing all MoDOT approved PPE
- If PPE has limited retroreflectivity, significant dirt or damage, significant fading or poor color contrast, it shall be replaced

FLAGGING



ACCEPTABLE



UNACCEPTABLE

MODOT STANDARD

- MoDOT safety policies must be practiced at all times, including wearing all MoDOT approved PPE and using correct flagging procedures
- Flagging operators must be re-certified every four years