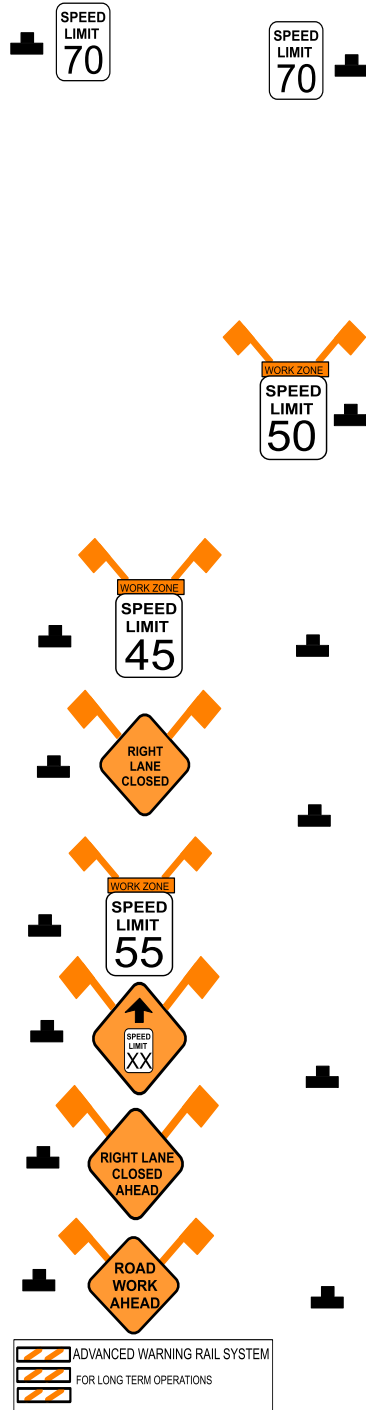
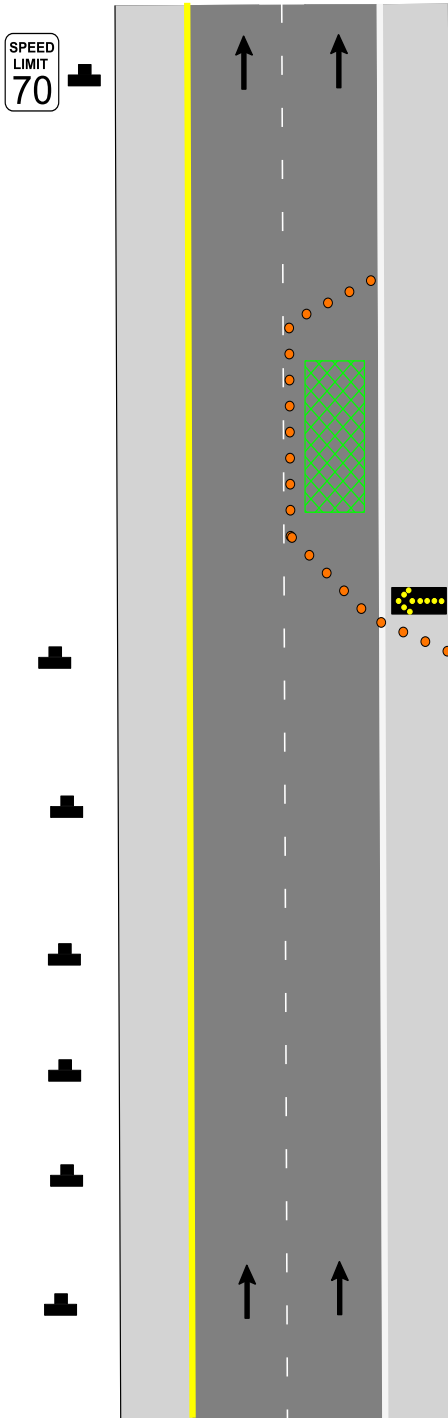
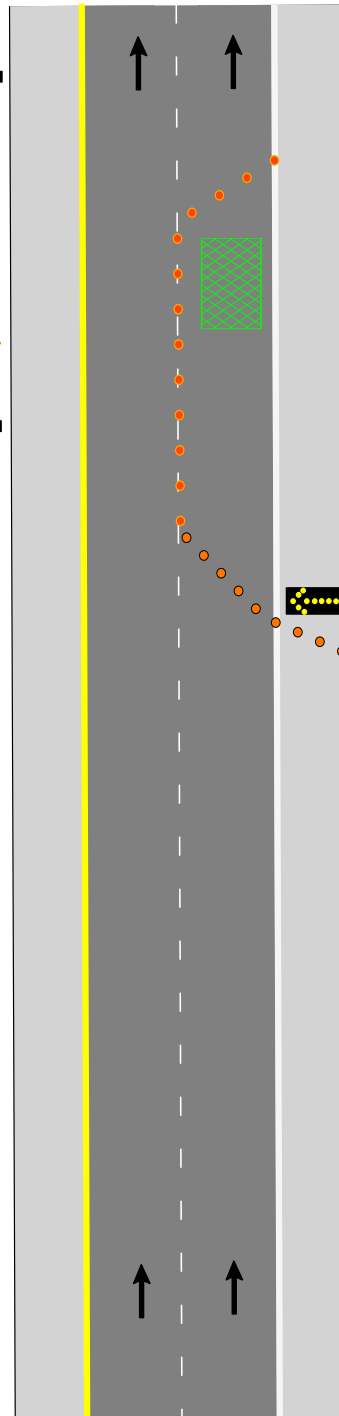


Figure 616.29.3.4 Work Zone "Speed Limit" Locations for Reductions Greater than 20 mph and Reduction in Two Locations

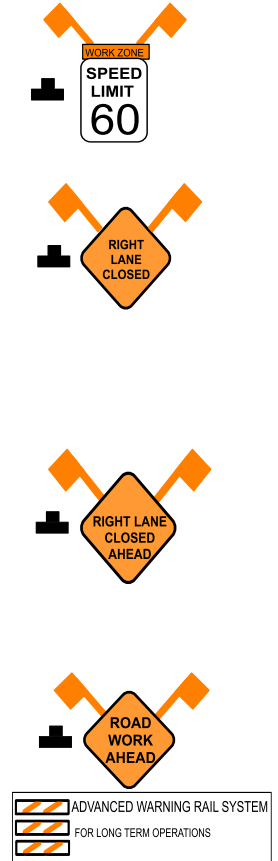
Speed Reduction Greater than 20 mph.



Speed Reduction in Two Locations.



If the geometrics require a 10 mph reduction at the beginning of the project and construction work requires an additional 5 to 10 mph reduction farther down the road, then the WO3-5 SPEED LIMIT XX AHEAD sign is not required.



Notes:

For undivided roadways, provide signs only on the right side of each direction.

For proper speed limit sign spacing, reference typical applications "Work Zone Speed Limit Locations within the Advance Warning Area" or "Work Zone Speed Limit Locations within Activity Area".