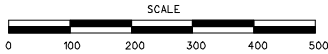


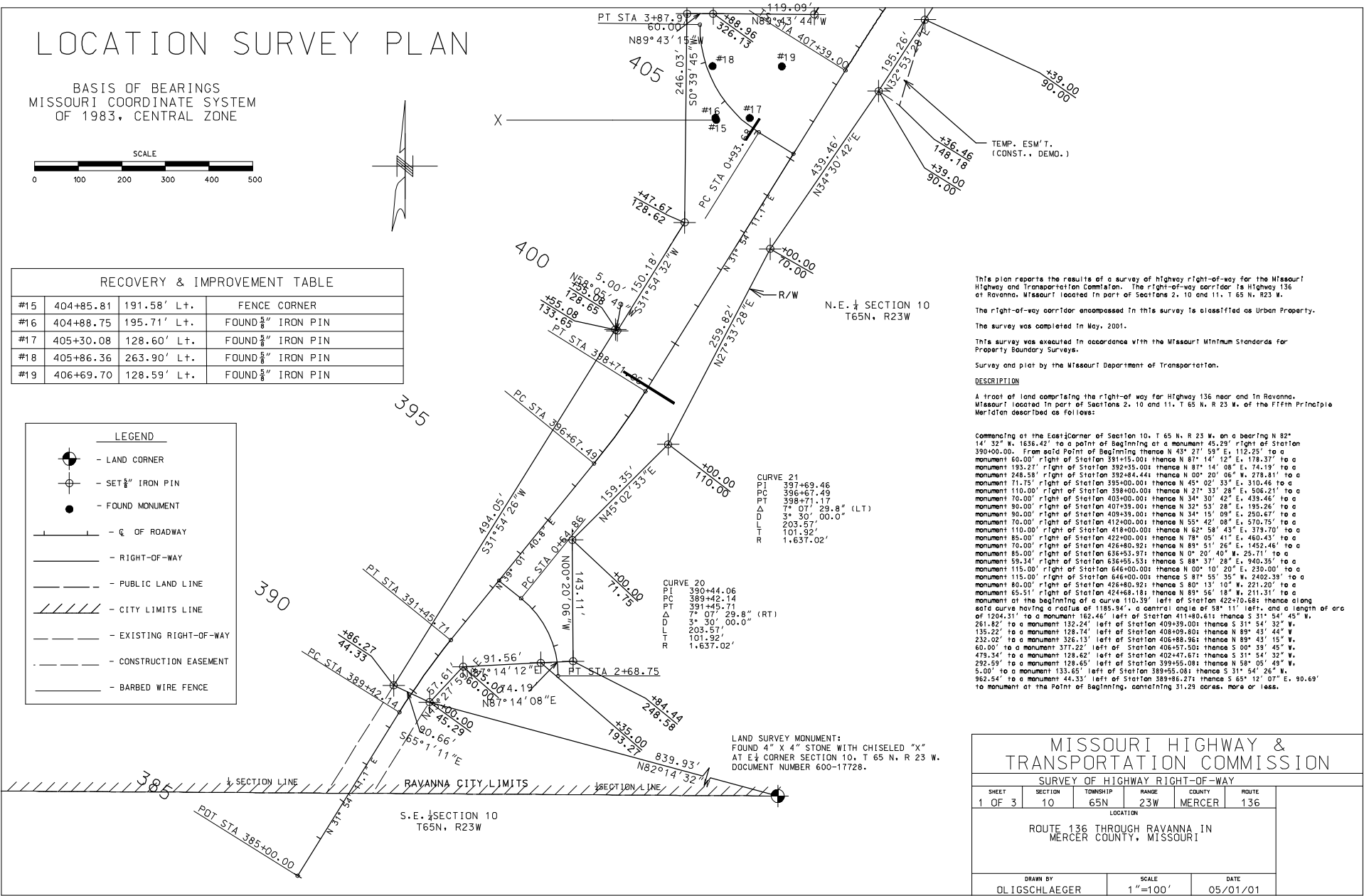
LOCATION SURVEY PLAN

BASIS OF BEARINGS
MISSOURI COORDINATE SYSTEM
OF 1983, CENTRAL ZONE



RECOVERY & IMPROVEMENT TABLE			
#15	404+85.81	191.58' L.T.	FENCE CORNER
#16	404+88.75	195.71' L.T.	FOUND $\frac{5}{8}$ " IRON PIN
#17	405+30.08	128.60' L.T.	FOUND $\frac{5}{8}$ " IRON PIN
#18	405+86.36	263.90' L.T.	FOUND $\frac{5}{8}$ " IRON PIN
#19	406+69.70	128.59' L.T.	FOUND $\frac{5}{8}$ " IRON PIN

LEGEND	
	- LAND CORNER
	- SET $\frac{5}{8}$ " IRON PIN
	- FOUND MONUMENT
	- R/W
	- PUBLIC LAND LINE
	- CITY LIMITS LINE
	- EXISTING RIGHT-OF-WAY
	- CONSTRUCTION EASEMENT
	- BARBED WIRE FENCE



This plan reports the results of a survey of highway right-of-way for the Missouri Highway and Transportation Commission. The right-of-way corridor is Highway 136 in Ravanna, Missouri located in part of Sections 2, 10 and 11, T 65 N, R 23 W.

The right-of-way corridor encompassed in this survey is classified as Urban Property. The survey was completed in May, 2001.

This survey was executed in accordance with the Missouri Minimum Standards for Property Boundary Surveys.

Survey and plot by the Missouri Department of Transportation.

DESCRIPTION

A tract of land comprising the right-of-way for Highway 136 near and in Ravanna, Missouri located in part of Sections 2, 10 and 11, T 65 N, R 23 W, of the Fifth Principal Meridian described as follows:

Commencing at the East Corner of Section 10, T 65 N, R 23 W, on a bearing N 82° 14' 32" W, 1836.42' to a point of Beginning at a monument 45.29' right of Station 390+00.00. From said Point of Beginning thence N 43° 27' 53" E, 112.25' to a monument 60.00' right of Station 391+15.00; thence N 87° 14' 12" E, 178.37' to a monument 193.27' right of Station 392+35.00; thence N 87° 14' 08" E, 74.19' to a monument 248.58' right of Station 392+84.44; thence N 00° 20' 06" W, 278.81' to a monument 71.75' right of Station 395+00.00; thence N 45° 02' 33" E, 310.46' to a monument 110.00' right of Station 398+00.00; thence N 21° 33' 28" E, 506.21' to a monument 70.00' right of Station 403+00.00; thence N 34° 30' 42" E, 439.46' to a monument 90.00' right of Station 407+35.00; thence N 32° 53' 28" E, 195.26' to a monument 90.00' right of Station 409+35.00; thence N 34° 15' 09" E, 250.67' to a monument 10.00' right of Station 415+00.00; thence N 55° 42' 08" E, 570.75' to a monument 110.00' right of Station 418+00.00; thence N 62° 58' 43" E, 379.70' to a monument 85.00' right of Station 422+00.00; thence N 78° 05' 41" E, 460.43' to a monument 10.00' right of Station 426+80.92; thence N 89° 51' 26" E, 1452.46' to a monument 85.00' right of Station 636+55.53; thence N 0° 20' 40" W, 25.71' to a monument 59.34' right of Station 636+55.53; thence S 88° 37' 28" E, 940.35' to a monument 115.00' right of Station 646+00.00; thence N 00° 10' 20" E, 230.00' to a monument 115.00' right of Station 646+00.00; thence S 87° 55' 35" W, 2492.35' to a monument 80.00' right of Station 646+80.92; thence N 89° 56' 18" W, 211.31' to a monument at the beginning of a curve 110.58' left of Station 622+70.66; thence along said curve having a radius of 1185.34', a central angle of 58° 11' left, and a length of arc of 1204.31' to a monument 182.46' left of Station 411+80.61; thence S 31° 54' 45" W, 261.82' to a monument 132.24' left of Station 408+99.00; thence S 31° 54' 32" W, 135.22' to a monument 128.74' left of Station 408+09.80; thence N 89° 43' 44" W, 232.02' to a monument 326.13' left of Station 406+88.96; thence N 89° 43' 15" W, 60.00' to a monument 377.22' left of Station 406+57.50; thence S 00° 39' 45" W, 479.34' to a monument 128.62' left of Station 402+47.67; thence S 31° 54' 32" W, 292.59' to a monument 128.65' left of Station 399+55.08; thence N 58° 05' 49" W, 5.00' to a monument 133.65' left of Station 389+55.08; thence S 31° 54' 26" W, 962.54' to a monument 44.33' left of Station 389+86.27; thence S 65° 12' 07" E, 90.69' to monument at the Point of Beginning, containing 31.29 acres, more or less.

LAND SURVEY MONUMENT:
FOUND 4" X 4" STONE WITH CHISELED "X"
AT E 1/4 CORNER SECTION 10, T 65 N, R 23 W.
DOCUMENT NUMBER 600-17728.

MISSOURI HIGHWAY & TRANSPORTATION COMMISSION				
SURVEY OF HIGHWAY RIGHT-OF-WAY				
SHEET	SECTION	TOWNSHIP	RANGE	COUNTY
1 OF 3	10	65N	23W	MERCER
ROUTE 136 THROUGH RAVANNA IN MERCER COUNTY, MISSOURI				
DRAWN BY		SCALE		DATE
OLIGSCHLAEGER		1"=100'		05/01/01

Example Location Survey Plan