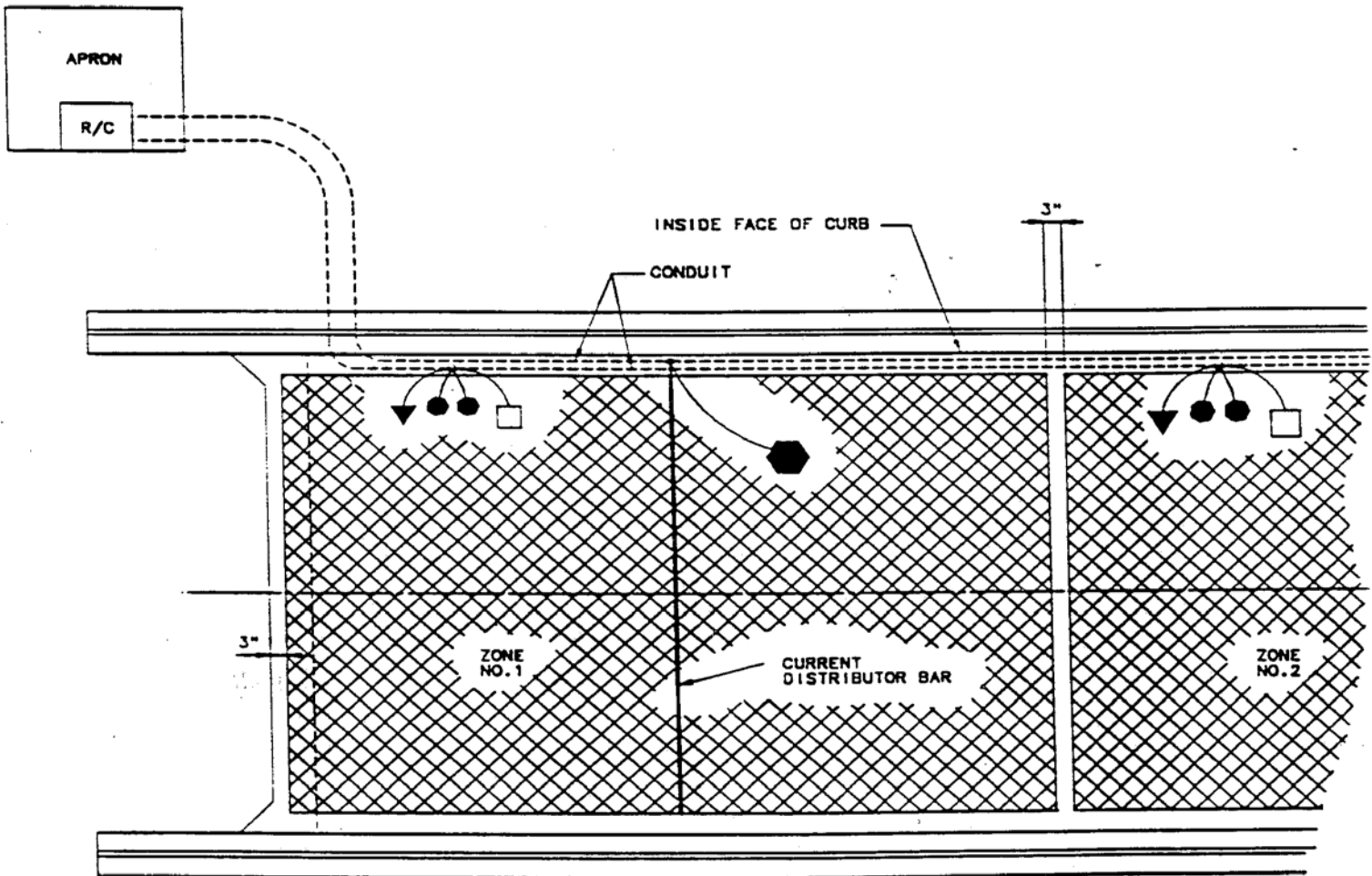








APPENDIX

MESH SYSTEMS



PART PLAN OF SLAB
(ELCARD MESH SYSTEM)

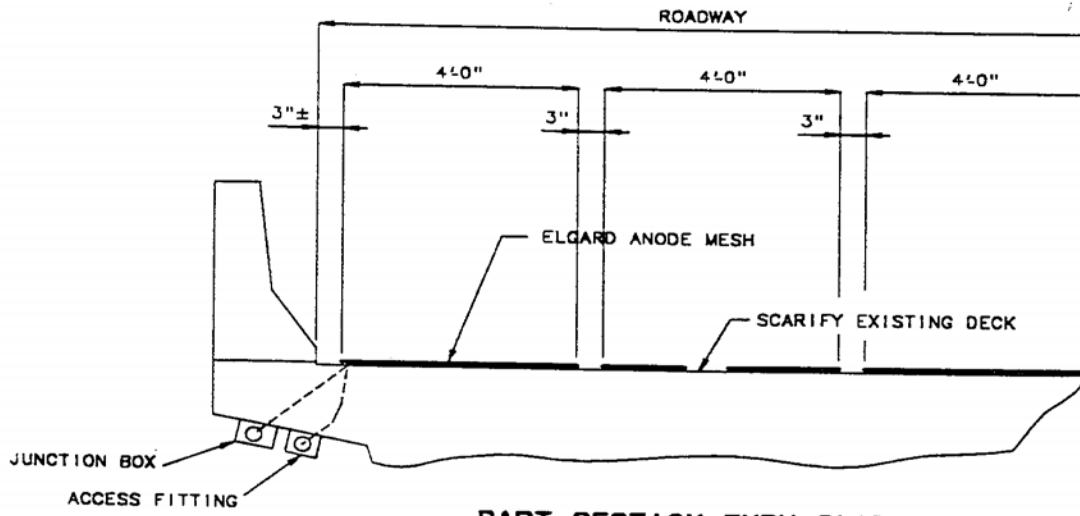
DENOTATIONS

-  ELCARD ANODE MESH
-  SYSTEM NEGATIVE CONNECTIC
-  REFERENCE CELL
-  GROUNDS
-  REBAR PROBE (CORROSOMETER)
-  CONDUIT

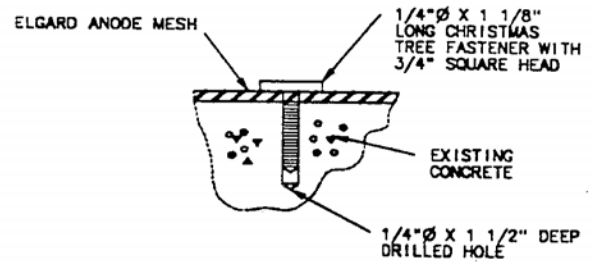
NOTE:

- THE ANODE LEADS AND SYSTEM NEGATIVE RETURN LEADS SHALL BE ROUTED IN THE SAME CONDUIT.
- THE REFERENCE CELL, REFERENCE CELL GROUND LEAD, REBAR PROBE AND PROBE GROUND LEAD SHALL BE ROUTED IN THE SAME CONDUIT.
- THE REFERENCE CELL GROUND LEAD SHALL BE WELDED TO TOP REBAR WITHIN ONE FOOT OF THE REFERENCE CELL.
- ALL ZONES ARE SIMILAR (SEE PART SECTION THRU SLAB).
- ANODE ASSEMBLY NUMBER MUST MATCH ZONE NUMBER.

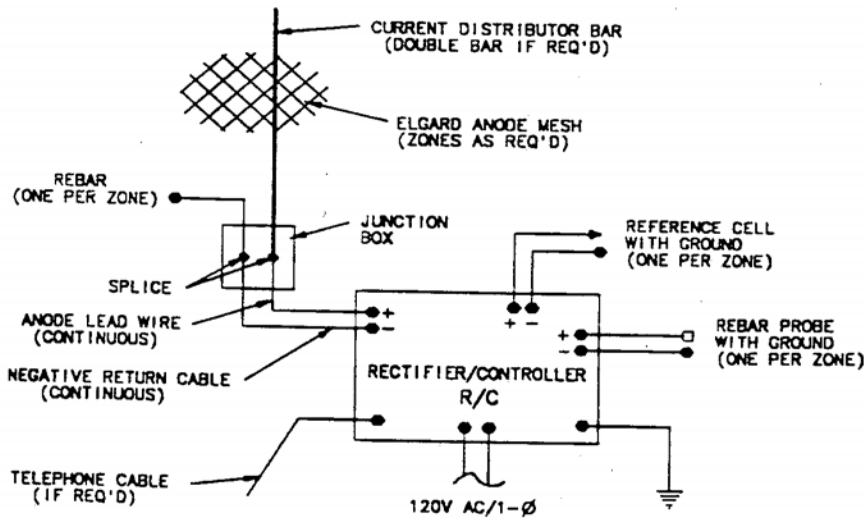
MESH SYSTEMS



PART SECTION THRU SLAB
(ELGARD MESH SYSTEM)



DETAIL "A"
(CHRISTMAS TREE CLIP)



PARTIAL SCHEMATIC