

Appendix E:

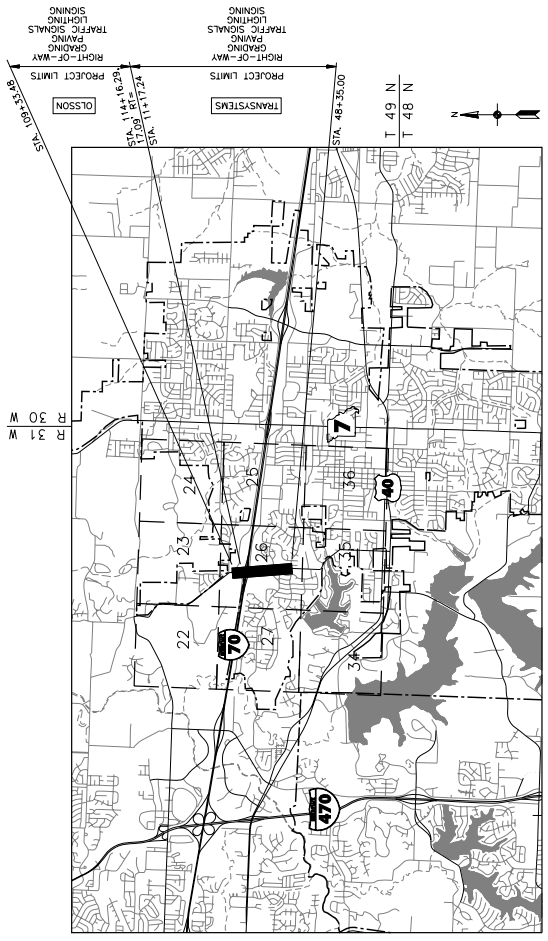
Sample Set of Plans for I-70 and Woods Chapel Rd
(Blue Springs)

CITY OF BLUE SPRINGS MISSOURI PLANS FOR PROPOSED WOODS CHAPEL ROAD IMPROVEMENTS NW JEFFERSON RD TO NW CASTLE DR

TRANSYSTEMS	
SHEET NO.	DESCRIPTION
1	TITLE PAGE
2	GENERAL NOTES
3	TYPICAL SECTIONS
4	TYPICAL SECTIONS
5	GRADING PLANS
6	ALIGNMENT DESCRIPTIONS
7	STATION AND OFFSETS
8	CURB RETURN PROFILES
9	MISCELLANEOUS DETAILS
10	CULVERT DETAILS
11	STORM SEWER DETAILS
12	PROPOSED PLANS
13	EXISTING BRIDGE DETAILS
14	EXISTING BRIDGE DETAILS
15	TRAFFIC SIGNAL PLANS
16	PAVEMENT MARKING AND SIGNING
17	EROSION CONTROL DETAIL
18	LANDSCAPE PLANS
19	REGULATION QUICK COUPLER
20	CROSS SECTIONS
21	270 - 386

OLSSON	
SHEET NO.	DESCRIPTION
A01	TYPICAL SECTIONS/ALIGNMENT DATA
A02	PLAN AND PROFILE SHEETS
A03 - A08	DRAFT LOCATION SURVEY

JACKSON COUNTY
MHTC JOB NO. J412289



LOCATION MAP
1" = 1000'
BLUE SPRINGS, JACKSON COUNTY, MISSOURI
SECTION 26, TOWNSHIP 49N, RANGE 31W

RIGHT OF WAY
THE DESIGN GUIDE FOR THE WIDTH OF RIGHT OF WAY FOR THIS PROJECT OR LESS RIGHT OF WAY MAY BE SECURED TO SATISFY THE REQUIREMENT OF THE DESIGN FEATURES OF THIS ROADWAY.
ALL RIGHT-OF-WAY ACQUIRED TO BE FULLY ACCESS CONTROLLED.
CITY RIGHT-OF-WAY ASSIGNED TO BE NORMAL CITY RIGHT-OF-WAY.

- EXISTING CITY CONTROLLED ACCESS RIGHT OF WAY
- NEW CITY CONTROLLED ACCESS RIGHT OF WAY
- EXISTING CITY RIGHT OF WAY
- NEW CITY RIGHT OF WAY
- EXISTING MDOT CONTROLLED ACCESS RIGHT OF WAY
- NEW MDOT CONTROLLED ACCESS RIGHT OF WAY

DESIGN DESIGNATION
WOODS CHAPEL ROAD
CLASSIFICATION = 26500 ARTERIAL
A.D.T. = 2039 = 40,200
D.A.V. = 32
V = 40 M.P.H.

EMERGENCY UTILITY NUMBERS
CALL BEFORE YOU DIG --- 1 - 800 - 806 - 8182

- KCP&L - JEFF WILLIAMS --- 816 - 731 - 7777 EXT 4910
- COMCAST COMMUNICATIONS - STEVE CROWMELL --- 816 - 795 - 2257
- MISSOURI GAS ENERGY - KENY LYNCH --- 816 - 329 - 6218
- GIS (WATER, SANITARY SEWER) - CHRIS SANDIE --- 816 - 228 - 0194
- LIGHTCORE - KIRK THOMAS --- 816 - 880 - 1610
- KC SCOUT - KENNY LYNCH --- 816 - 985 - 0884
- MDOT SIGNALS - MARK DURHAM --- 816 - 356 - 4748

- LEGEND**
- OVERHEAD ELECTRIC
 - WATER LINE
 - GAS LINE
 - FIBER OPTIC
 - TELEPHONE
 - UNDERGROUND ELECTRIC
 - SANITARY SEWER LINE
 - ELECTRIC MANHOLE
 - POWER POLE
 - GUY WIRE
 - ELECTRIC BOX
 - WATER VALVE
 - FIRE HYDRANT - TRIPLE
 - GAS METER
 - GAS TESTING STATION
 - GAS REGULATOR
 - CABLE TELEVISION BOX
 - TELEPHONE PEDestal
 - TELEPHONE POLE
 - SANITARY SEWER MANHOLE
 - VAULT
 - METAL POLE W/ LUMINAIRE
 - SIGNAL CONTROL BOX
 - MAST ARM
 - GENERIC MANHOLE
 - FENCE
 - PINE TREE
 - TREE
 - BUSH
 - STUMP
 - YARD OR LOT LIGHT
 - BUSINESS SIGN
 - MISC. POST
 - MALEBOX
 - BORING LOG
 - BENCH MARK
 - RESEARCH MARK
 - CONTROL POINT
 - JUNCTION BOX
 - SAWCUT



PREPARED BY
SCALE
1" = 1000'

TRANSYSTEMS	
LENGTH OF PROJECT	
END OF PROJECT	48+35.00
BEGINNING OF PROJECT	11+17.24
PROJECT LENGTH	3717.76

OLSSON	
LENGTH OF PROJECT	
END OF PROJECT	114+16.29
BEGINNING OF PROJECT	482.81
PROJECT LENGTH	482.81

APPROVED BY: CITY OF BLUE SPRINGS DATE

JEFF SELL
ASSISTANT DIRECTOR OF PUBLIC WORKS

APPROVED BY: CITY OF INDEPENDENCE DATE

JOHN FOWELL, P.E.
DIRECTOR OF PUBLIC WORKS

ENGINEER
TRANSYSTEMS ENGINEERS SEAL APPLIES FOR TRANSYSTEMS SHEETS ONLY

ENGINEER
OLSSON ENGINEERS SEAL APPLIES FOR OLSSON'S SHEETS ONLY

IF THIS DRAWING IS LESS THAN 22 X 34 IT IS A REDUCED SIZE DRAWING

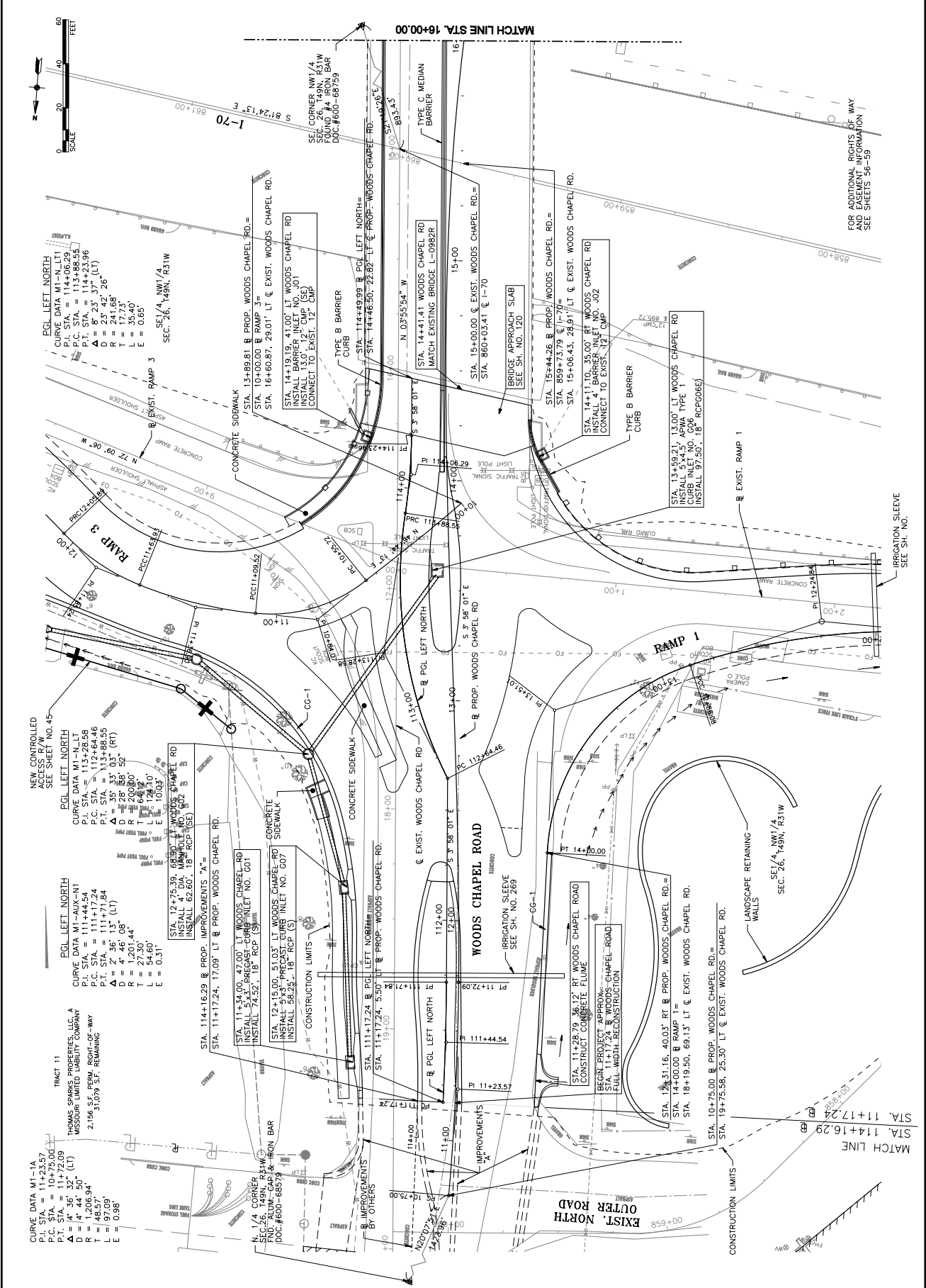


CONSULTANTS:
 HMCAS SPRINGS, MISSOURI
 2400 PERSHING ROAD
 SUITE 400
 KANSAS CITY, MO 64108
 PHONE: 816-229-9801
 FAX: 816-229-9801

WOODS CHAPEL ROAD
 BLUE SPRINGS, MISSOURI
 MHTC JOB NO. M42289

REVISIONS:	DATE	DESCRIPTION

PROJECT NO. P1000838
 SCALE: 1" = 20'
 DATE: 11/11/11
 DESIGNED BY: JAM
 DRAWN BY: JAM
 CHECKED BY: DMV
 SHEET TITLE:
WOODS CHAPEL ROAD
STA. 10+75.00 TO
STA. 16+00.00
 SHEET NO. 13



IF THIS DRAWING IS LESS THAN 22" X 34" IT IS A REDUCED SIZE DRAWING



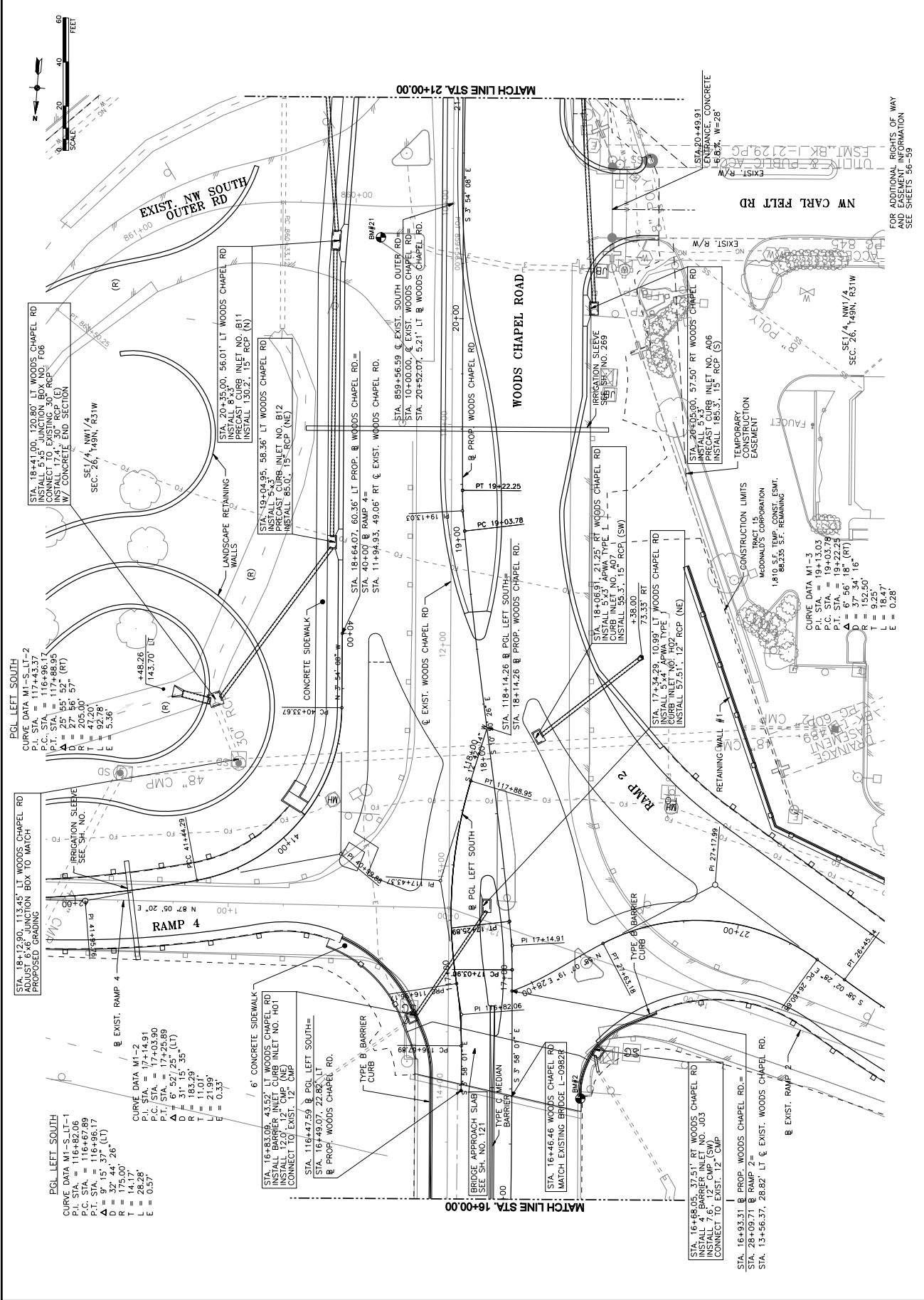
3400 PERSHING ROAD
SUITE 400
KANSAS CITY, MO 64108
PHONE 816-228-8801
FAX 816-228-8801

CONSULTANTS:

WOODS CHAPEL ROAD
BLUE SPRINGS, MISSOURI
MHJC JOB NO. J412289

MARK	DATE	DESCRIPTION

PROJECT: P170000822
SCALE: 1" = 20'
DESIGNED BY: JAM
DRAWN BY: JAM
CHECKED BY: DMV
SHEET TITLE:
WOODS CHAPEL ROAD
STA. 16+00.00 TO STA. 21+00.00
SHEET NO. 15



FOR ADDITIONAL RIGHTS OF WAY AND EASEMENT INFORMATION SEE SHEETS 36-39

IF THIS DRAWING IS LESS THAN 27 X 37 IN. A REDUCED SIZE DRAWING



3400 PERSHING ROAD
 SUITE 400
 KANSAS CITY, MO 64108
 PHONE: 816-229-8900
 FAX: 816-229-8901

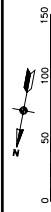
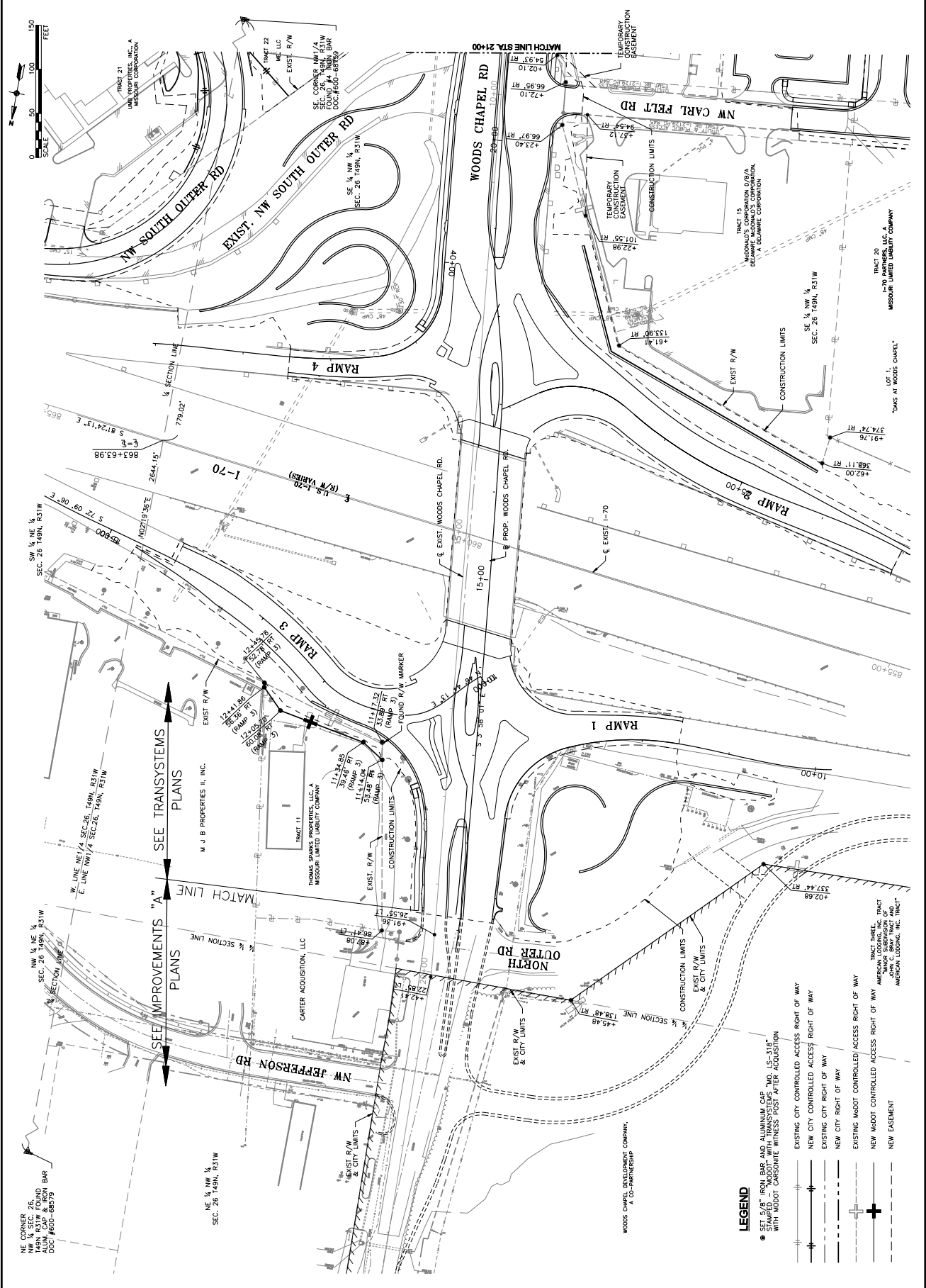
CONSULTANTS:

WOODS CHAPEL ROAD
 BLUE SPRINGS, MISSOURI
 MHTC JOB NO. J412289

REVISIONS:	DATE	DESCRIPTION

PROJECT: P107000333
 SCALE: 1" = 20'
 DESIGNED BY: DAD
 DRAWN BY: DAD
 CHECKED BY: DMV
 SHEET TITLE:
**STATION AND
 OFFSETS**

SHEET NO. 56

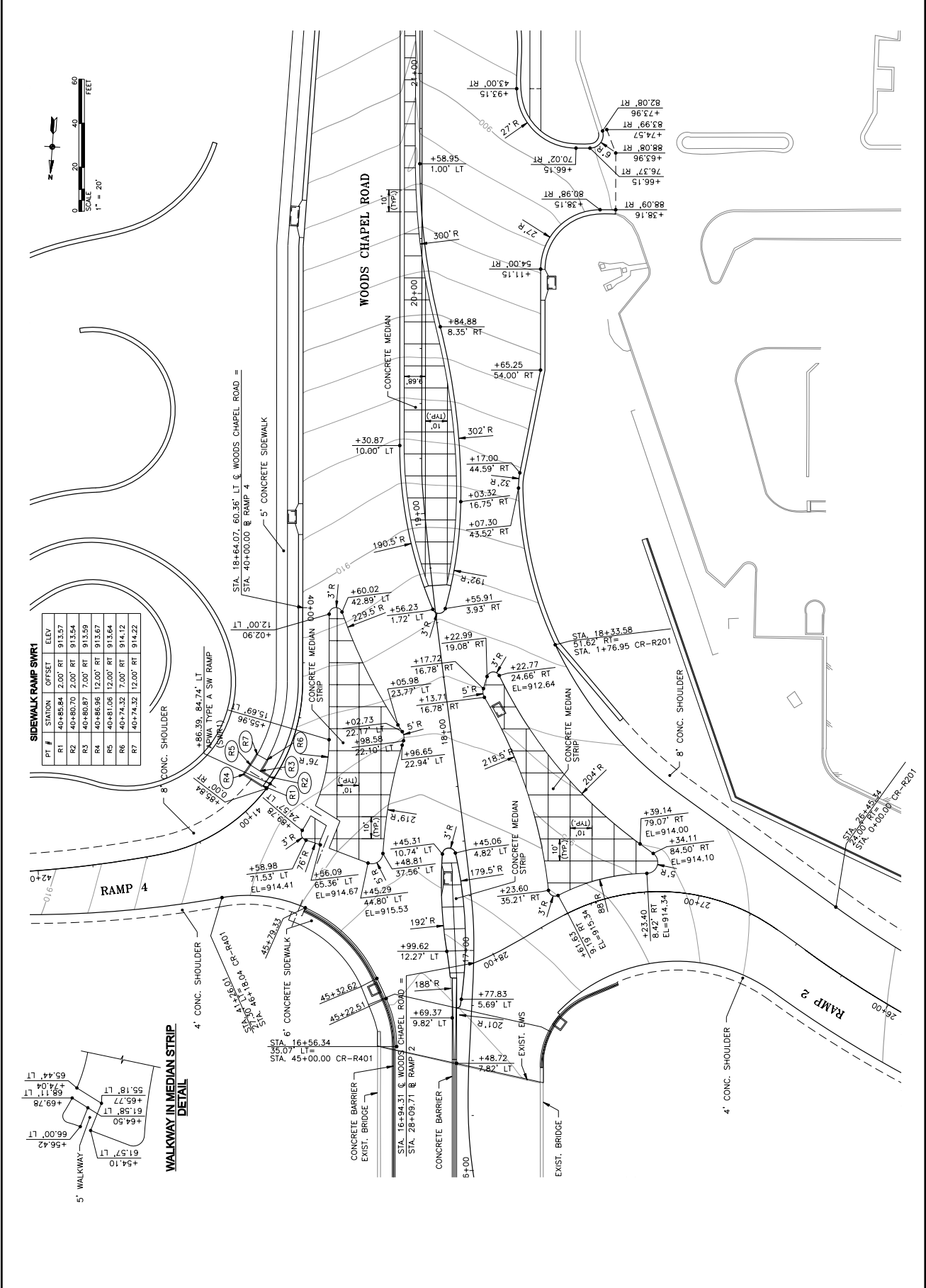


SEE IMPROVEMENTS "A"
 SEE TRANSYSTEMS PLANS

- LEGEND**
- SET 5/8" IRON BAR AND ALUMINUM CAP "MO 15-318" WITH MODOT CARSONITE WITNESS POST AFTER ACQUISITION
 - EXISTING CITY CONTROLLED ACCESS RIGHT OF WAY
 - NEW CITY CONTROLLED ACCESS RIGHT OF WAY
 - EXISTING CITY RIGHT OF WAY
 - NEW CITY RIGHT OF WAY
 - EXISTING MODOT CONTROLLED ACCESS RIGHT OF WAY
 - NEW MODOT CONTROLLED ACCESS RIGHT OF WAY
 - NEW EASEMENT

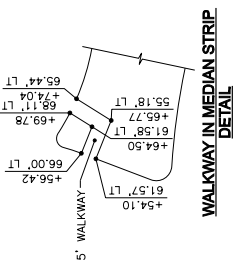
IF THIS DRAWING IS LESS THAN 22" X 34" IT IS A REDUCED SIZE DRAWING

MARK	DATE	DESCRIPTION

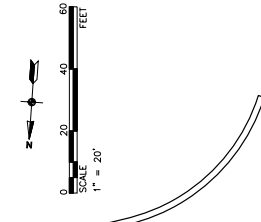
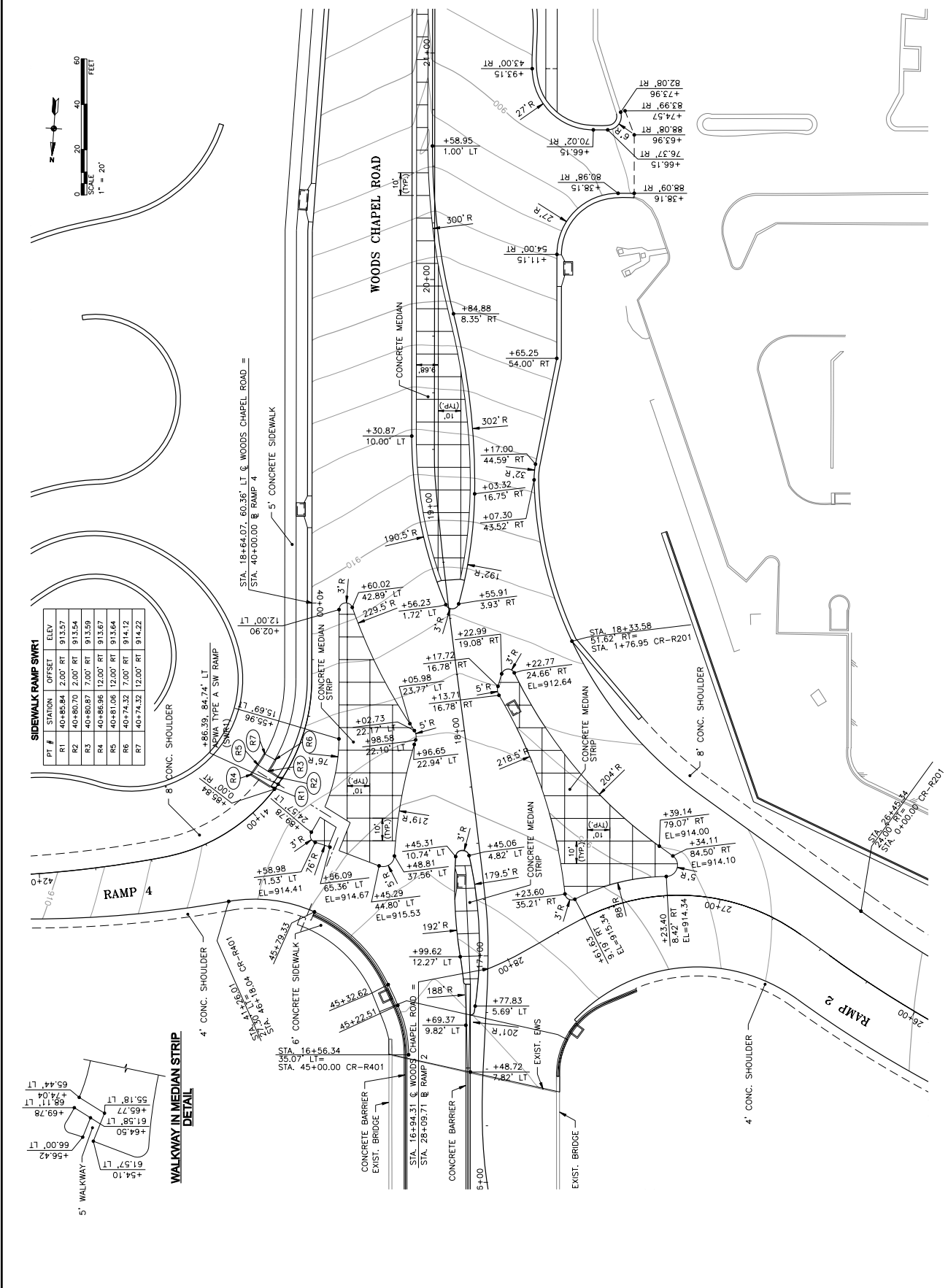


SIDEWALK RAMP SWR1

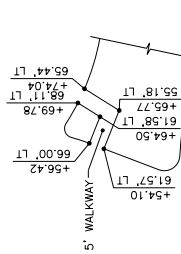
PI #	STATION	OFFSET	ELEV
R1	40+85.84	2.00' RT	913.57
R2	40+80.70	2.00' RT	913.54
R3	40+80.87	7.00' RT	913.59
R4	40+86.96	12.00' RT	913.67
R5	40+81.06	12.00' RT	913.64
R6	40+74.32	7.00' RT	914.12
R7	40+74.32	12.00' RT	914.22



IF THIS DRAWING IS LESS THAN 22" X 34" IT IS A REDUCED SIZE DRAWING

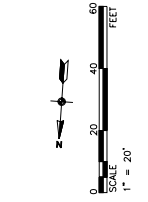
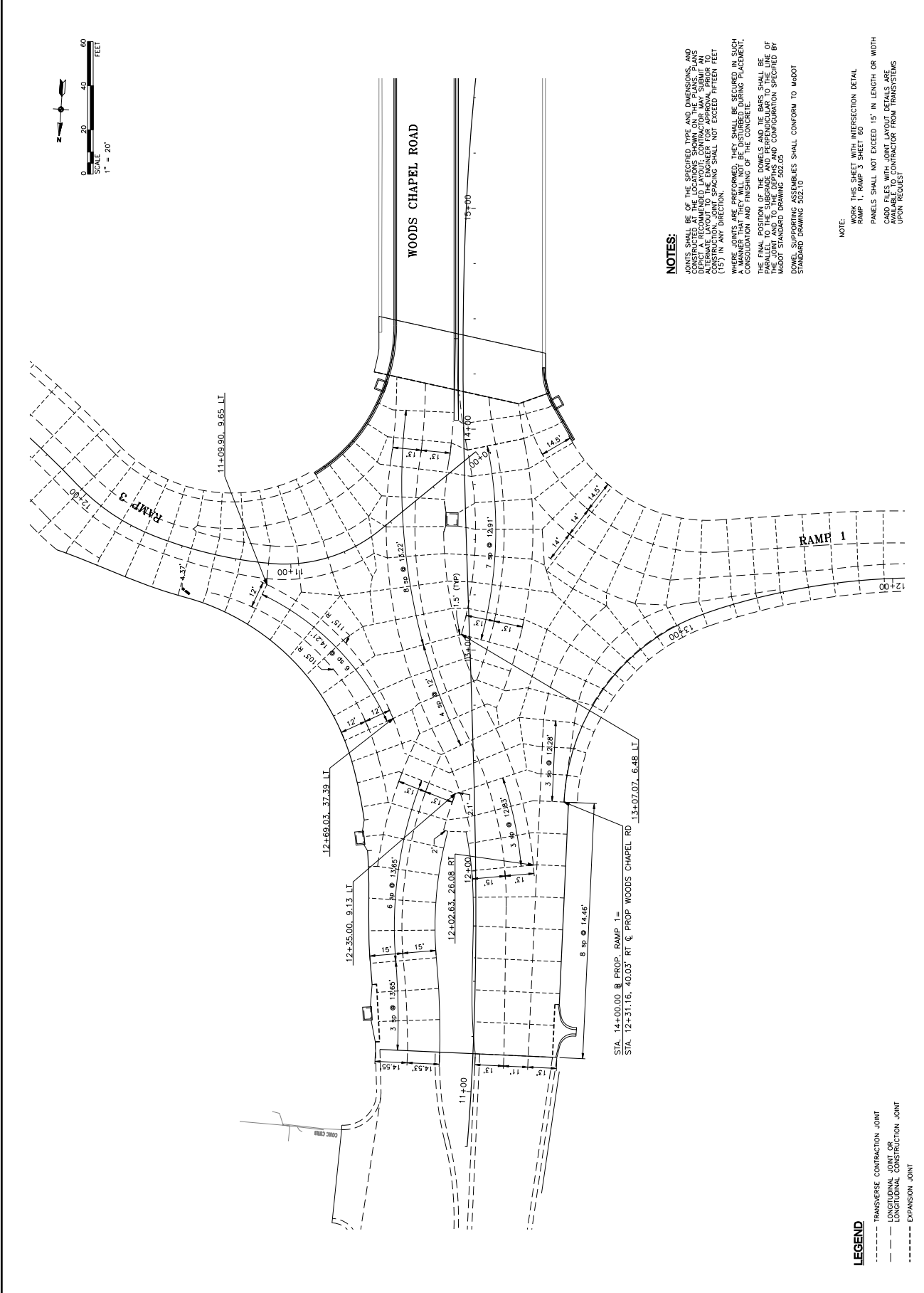


STATION	OFFSET	ELEV.	
R1	40'-85.84'	2.00' RT	913.57
R2	40'-80.70'	2.00' RT	913.54
R3	40'-80.87'	7.00' RT	913.59
R4	40'-86.96'	12.00' RT	913.67
R5	40'-81.06'	12.00' RT	913.64
R6	40'-74.32'	7.00' RT	914.12
R7	40'-74.32'	12.00' RT	914.22



IF THIS DRAWING IS LESS THAN 22"x34" IT IS A REDUCED SIZE DRAWING

MARK	DATE	DESCRIPTION



NOTES:
 JOINTS SHALL BE OF THE SPECIFIED TYPE AND DIMENSIONS, AND SHALL BE CONFORM TO THE STANDARD DRAWING 502.05. CONTRACTOR SHALL VERIFY THE LOCATION OF JOINTS AND DETAIL A RECOMMENDED LAYOUT. CONTRACTOR MAY SUBMIT AN ALTERNATE LAYOUT TO THE ENGINEER FOR APPROVAL PRIOR TO CONSTRUCTION. JOINTS SHALL NOT EXCEED FIFTEEN FEET (15') IN ANY DIRECTION.
 WHERE JOINTS ARE PREFORMED, THEY SHALL BE SECURED IN SUCH A MANNER AS TO PREVENT THE CONCRETE FROM MOVING. CONSULTATION AND FINISHING OF THE CONCRETE SHALL BE COMPLETED PRIOR TO THE PLACEMENT OF THE JOINTS.
 THE FINAL POSITION OF THE DOMES AND TIE BARS SHALL BE PARALLEL TO THE SUBGRADE AND PERPENDICULAR TO THE LINE OF ROAD. THE POSITION OF THE DOMES AND TIE BARS SHALL BE MOVED TO THE SUBGRADE AND CONFIGURATION SPECIFIED BY MODOT STANDARD DRAWING 502.05.
 DOWEL SUPPORTING ASSEMBLIES SHALL CONFORM TO MODOT STANDARD DRAWING 502.10

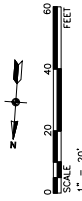
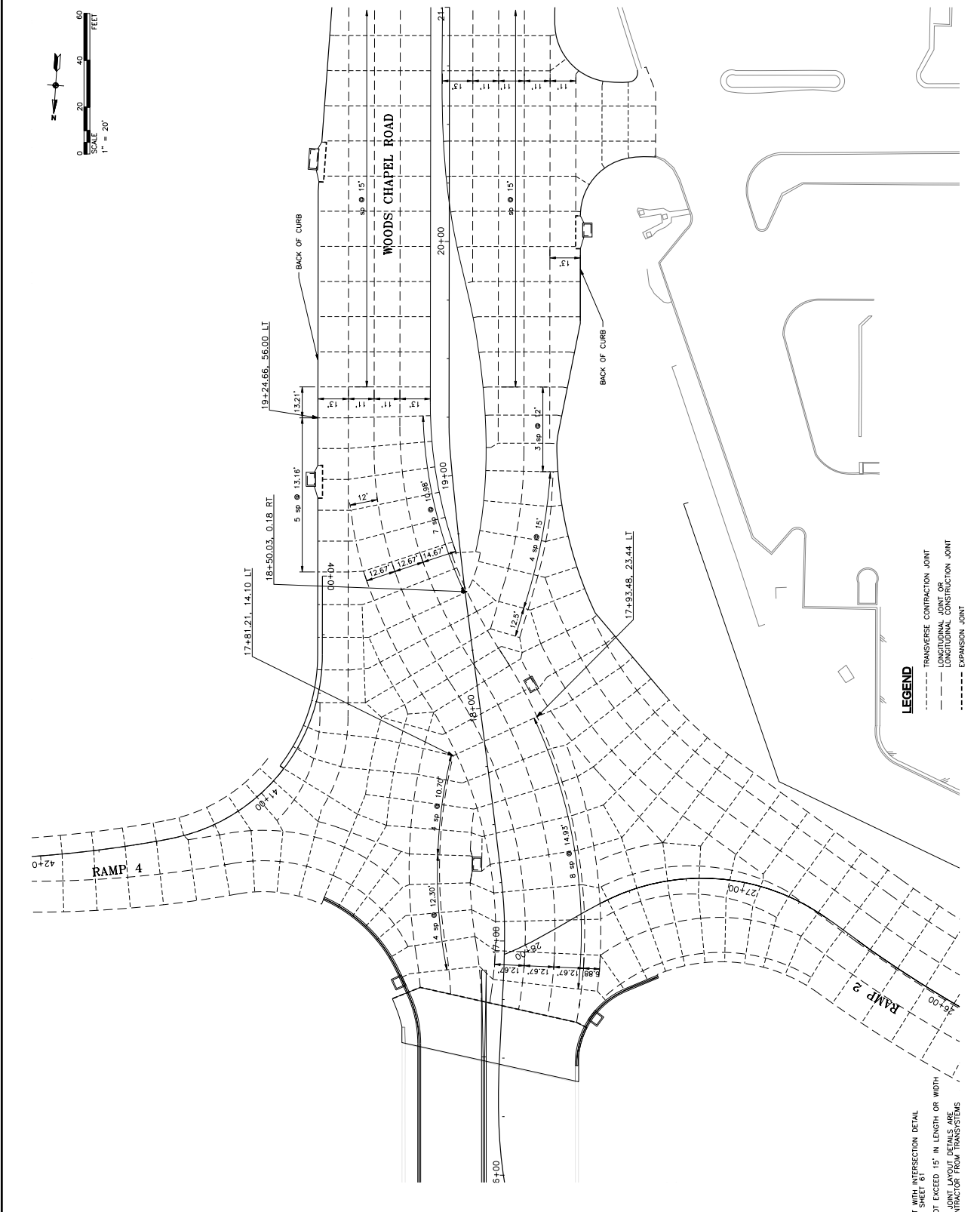
NOTE:
 REFER TO THIS SHEET WITH INTERSECTION DETAIL FOR RAMP 1, RAMP 3 SHEET 60
 PANELS SHALL NOT EXCEED 15' IN LENGTH OR WIDTH
 CAD FILES WITH JOINT LAYOUT DETAILS ARE AVAILABLE TO CONTRACTOR FROM TRANSYSTEMS UPON REQUEST

LEGEND
 - - - - - TRANSVERSE CONTRACTION JOINT
 - - - - - LONGITUDINAL JOINT OR
 - - - - - LONGITUDINAL CONSTRUCTION JOINT
 - - - - - EXPANSION JOINT

IF THIS DRAWING IS LESS THAN 27 X 37 IN. A REDUCED SIZE DRAWING

MARK	DATE	DESCRIPTION

PROJECT NO.: P101000332
 SCALE: 1"=20'
 DESIGNED BY: GWN
 DRAWN BY: KAM
 CHECKED BY: DMV
 SHEET TITLE:
**JOINT LAYOUT
 WOODS CHAPEL
 ROAD**
 SHEET NO.

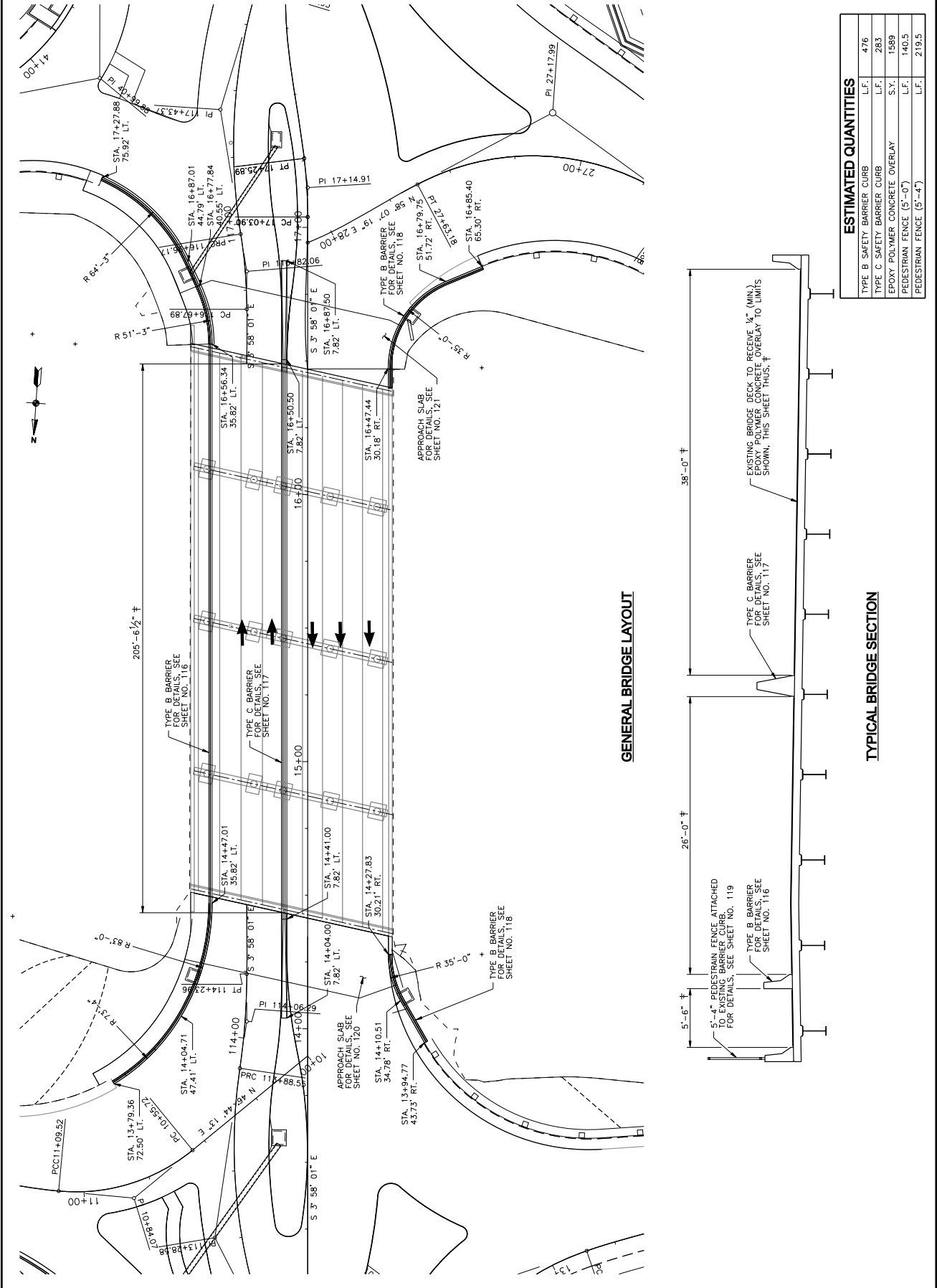


LEGEND

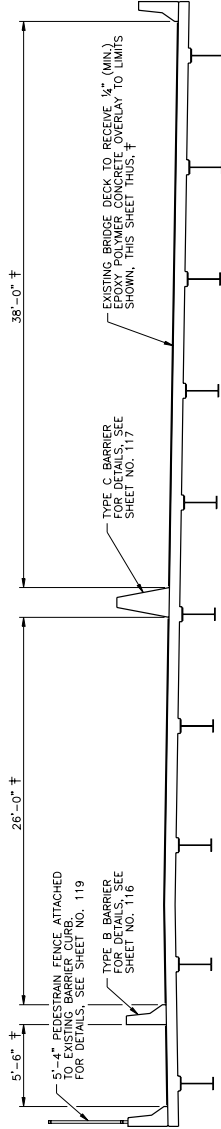
- TRANSVERSE CONTRACTION JOINT
- LONGITUDINAL JOINT OR CONSTRUCTION JOINT
- EXPANSION JOINT

NOTE:
 WORK THIS SHEET WITH INTERSECTION DETAIL
 RAMP 2, RAMP 4 SHEET 61
 PANELS SHALL NOT EXCEED 15' IN LENGTH OR WIDTH
 CADD FILES WITH JOINT LAYOUT DETAILS ARE
 AVAILABLE TO CONTRACTOR FROM TRANSSYSTEMS
 UPON REQUEST

IF THIS DRAWING IS LESS THAN 22" X 34" IT IS A REDUCED SIZE DRAWING



GENERAL BRIDGE LAYOUT



TYPICAL BRIDGE SECTION

ESTIMATED QUANTITIES	
TYPE B SAFETY BARRIER CURB	L.F. 476
TYPE C SAFETY BARRIER CURB	L.F. 283
EPOXY POLYMER CONCRETE OVERLAY	S.X. 1589
PEDESTRIAN FENCE (5'-0")	L.F. 140.5
PEDESTRIAN FENCE (5'-4")	L.F. 219.5

PHYSICAL ADDRESS
 2400 PERSHING ROAD
 SUITE 400
 KANSAS CITY, MO 64108
 PHONE: 816-223-8900
 FAX: 816-223-8901

CONSULTANTS:

WOODS CHAPEL ROAD
 BLUE SPRINGS, MISSOURI
 MHT JOB NO. 1412289

MARK	DATE	DESCRIPTION

PROJ. NO. P10108382
 SCALE: AS SHOWN
 DESIGNED BY: LMS
 DRAWN BY: AD
 CHECKED BY: DMS

SHEET TITLE:
**EXISTING BRIDGE
 AND BARRIER
 CURB LAYOUT**

SHEET NO. 115

IF THIS DRAWING IS LESS THAN 22 X 34 IT IS A REDUCED SIZE DRAWING



3400 PERSHING ROAD
 SUITE 400
 KANSAS CITY, MO 64108
 PHONE: 816-253-9800
 FAX: 816-253-9801

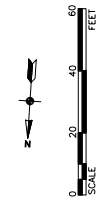
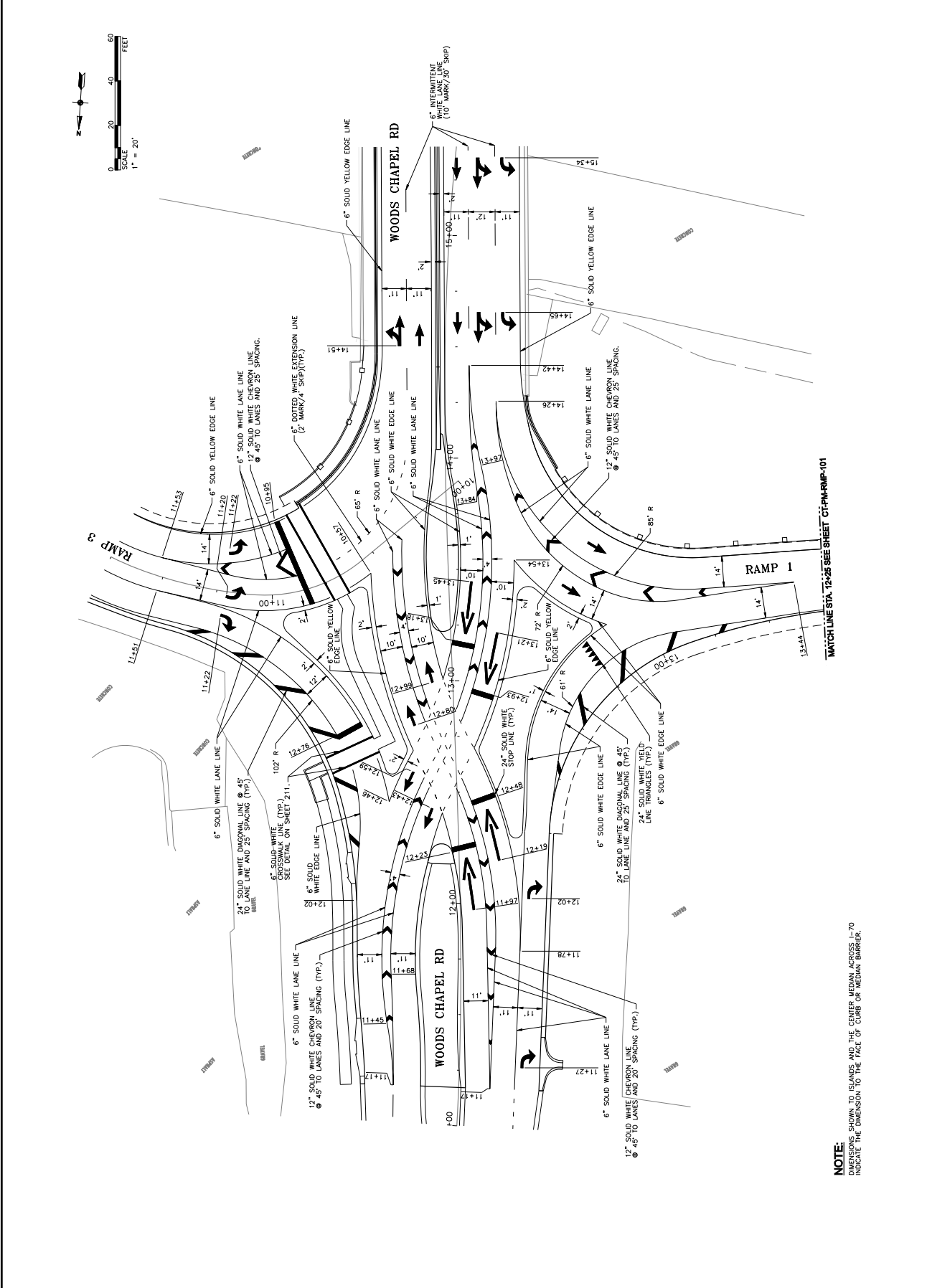
CONSULTANTS:

WOODS CHAPEL ROAD
 BLUE SPRINGS, MISSOURI
 MHTC JOB NO. M12289

REVISIONS:	DATE	DESCRIPTION

PROJECT NO. P1070000332
 SCALE: 1" = 20'
 DESIGNED BY: JOT
 DRAWN BY: JCG
 CHECKED BY: DMV

SHEET TITLE:
 WOODS CHAPEL ROAD
 PAVEMENT MARKING PLAN
 SHEET NO. 212



NOTE:
 DIMENSIONS SHOWN TO ISLANDS AND THE CENTER MEDIAN ACROSS TO INSURE THE DIMENSION TO THE FACE OF CURB OR MEDIAN BARRIER.

IF THIS DRAWING IS LESS THAN 22" X 34" IT IS A REDUCED SIZE DRAWING



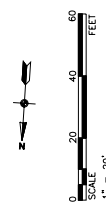
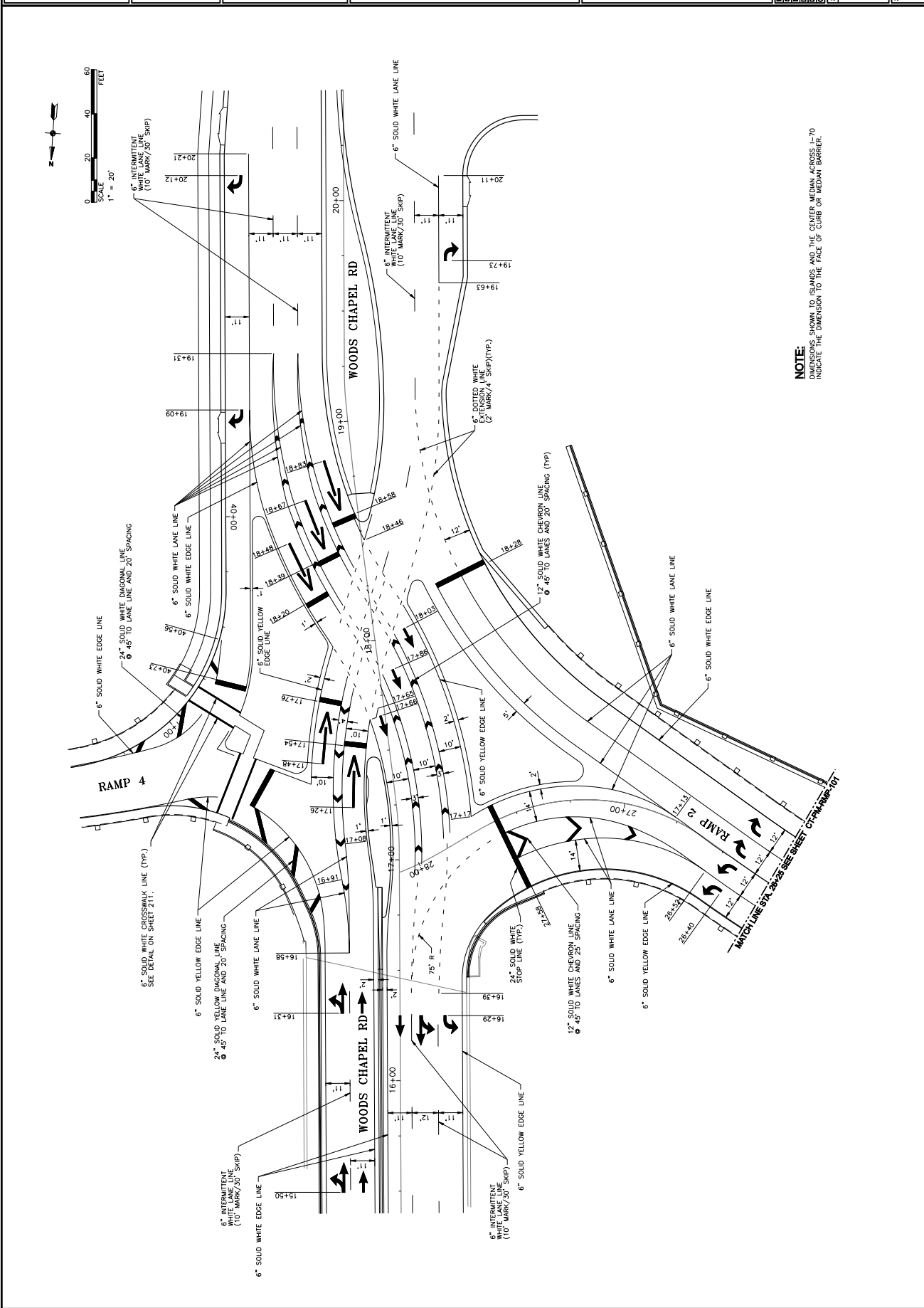
3400 PERSHING ROAD
 SUITE 400
 KANSAS CITY, MO 64108
 PHONE: 816-239-8900
 FAX: 816-239-8901

CONSULTANTS:

WOODS CHAPEL ROAD
 BLUE SPRINGS, MISSOURI
 MHTC JOB NO. M12289

REVISIONS:	DATE	DESCRIPTION

PROJECT NO. P107000332
 SCALE: 1" = 20'
 DESIGNED BY: JOT
 DRAWN BY: JOG
 CHECKED BY: DMW
 SHEET TITLE:
**WOODS CHAPEL ROAD
 PAVEMENT MARKING PLAN**
 SHEET NO. 213



NOTE:
 DIMENSIONS SHOWN TO ISLANDS AND THE CENTER MEDIAN ACROSS L-70
 INDICATE THE DIMENSION TO THE FACE OF CURB OR MEDIAN BARRIER.

IF THIS DRAWING IS LESS THAN 22" X 34" IT IS A REDUCED SIZE DRAWING

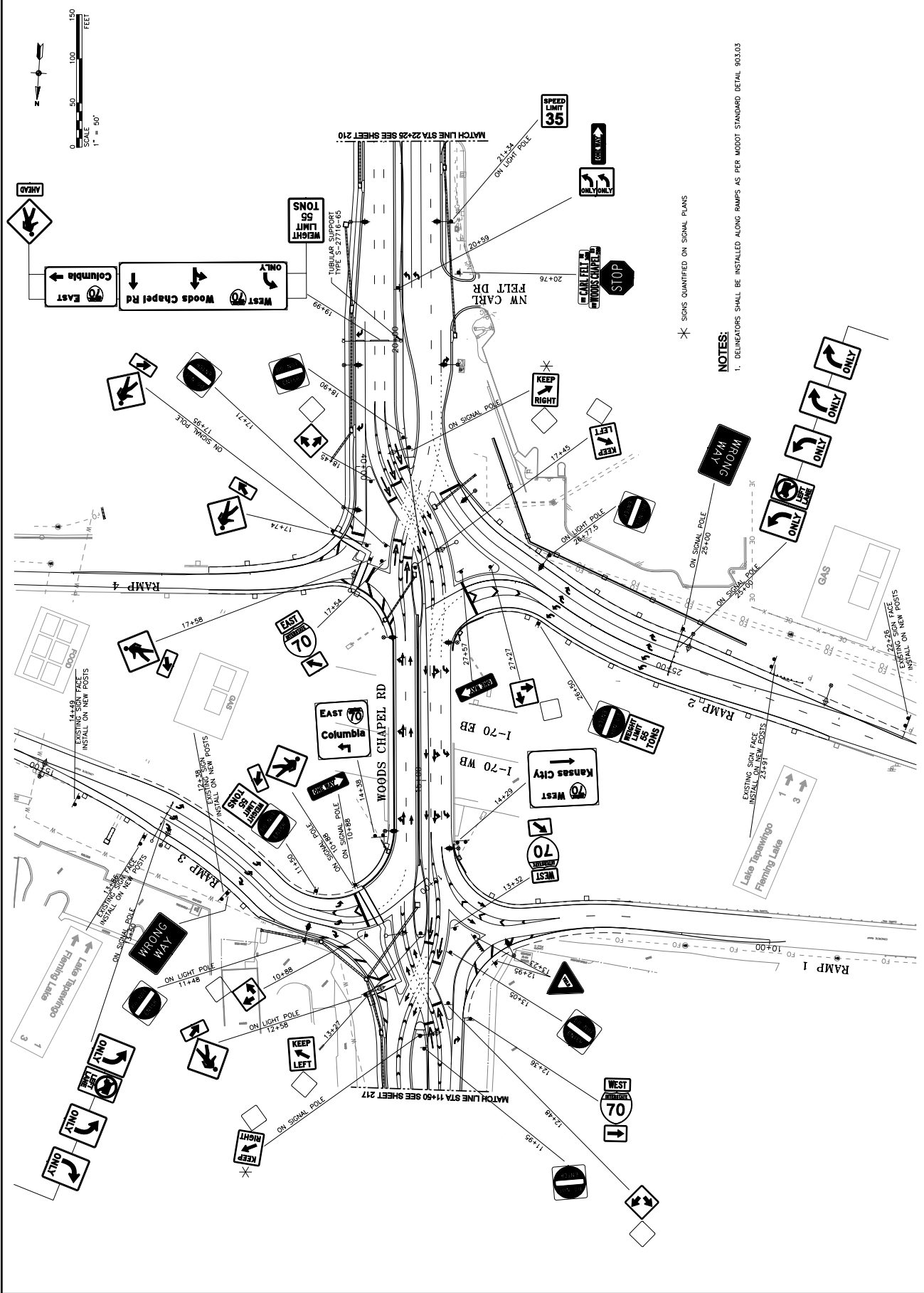


CONSULTANTS:

WOODS CHAPEL ROAD
 BLUE SPRINGS, MISSOURI
 MHTC JOB NO. M12289

MARK	DATE	DESCRIPTION

PROJECT NO. 17010000000
 SCALE: 1" = 50'
 DESIGNED BY: JGG
 DRAWN BY: JGG
 CHECKED BY: DMV
 SHEET TITLE:
**WOODS CHAPEL ROAD
 ROAD
 SIGNING
 PLAN**
 SHEET NO. 218



NOTES:
 1. DELINEATORS SHALL BE INSTALLED ALONG RAMPS AS PER MODOT STANDARD DETAIL 903.05

* SIGNS QUANTIFIED ON SIGNAL PLANS

IF THIS DRAWING IS LESS THAN 22" X 34" IT IS A REDUCED SIZE DRAWING