

DESIGN DESIGNATION

A.A.D.T - XXXX = XXXX
V = XX M.P.H

MISSOURI HIGHWAYS AND TRANSPORTATION COMMISSION

PLANS FOR PROPOSED STATE HIGHWAY

INDEX OF SHEETS

DESCRIPTION	SHEET NUMBER
TITLE SHEET -----	1
TYPICAL SECTIONS (TS) (1 SHEET)--	2
QUANTITIES (QU) (1 SHEET)-----	3
SPECIAL SHEET (SS)-----	4
TRAFFIC CONTROL SHEETS (TC)-----	5-8

"THIS MEDIA SHOULD NOT BE CONSIDERED A CERTIFIED DOCUMENT."

DATE PREPARED
3/13/2018

ROUTE	STATE
	MO

DISTRICT	SHEET NO.
	1

COUNTY

JOB NO.

CONTRACT ID.

PROJECT NO.

BRIDGE NO.

DATE	DESCRIPTION

LENGTH OF PROJECT

BEGINNING OF PROJECT _____

END OF PROJECT _____

APPARENT LENGTH _____ MILES

EQUATIONS AND EXCEPTIONS:

TOTAL CORRECTIONS _____

NET LENGTH OF PROJECT _____

STATE LENGTH _____

MISSOURI HIGHWAYS AND TRANSPORTATION COMMISSION

105 WEST CAPITOL
JEFFERSON CITY, MO 65102
1-888-ASK-MODOT (1-888-275-6636)

IF A SEAL IS PRESENT ON THIS SHEET IT HAS BEEN ELECTRONICALLY SEALED AND DATED.

"THIS MEDIA SHOULD NOT BE CONSIDERED A CERTIFIED DOCUMENT."

DATE PREPARED
3/13/2018

ROUTE	STATE
	MO

DISTRICT	SHEET NO.
	2

COUNTY

JOB NO.

CONTRACT ID.


PROJECT NO.

BRIDGE NO.

DESCRIPTION	DATE

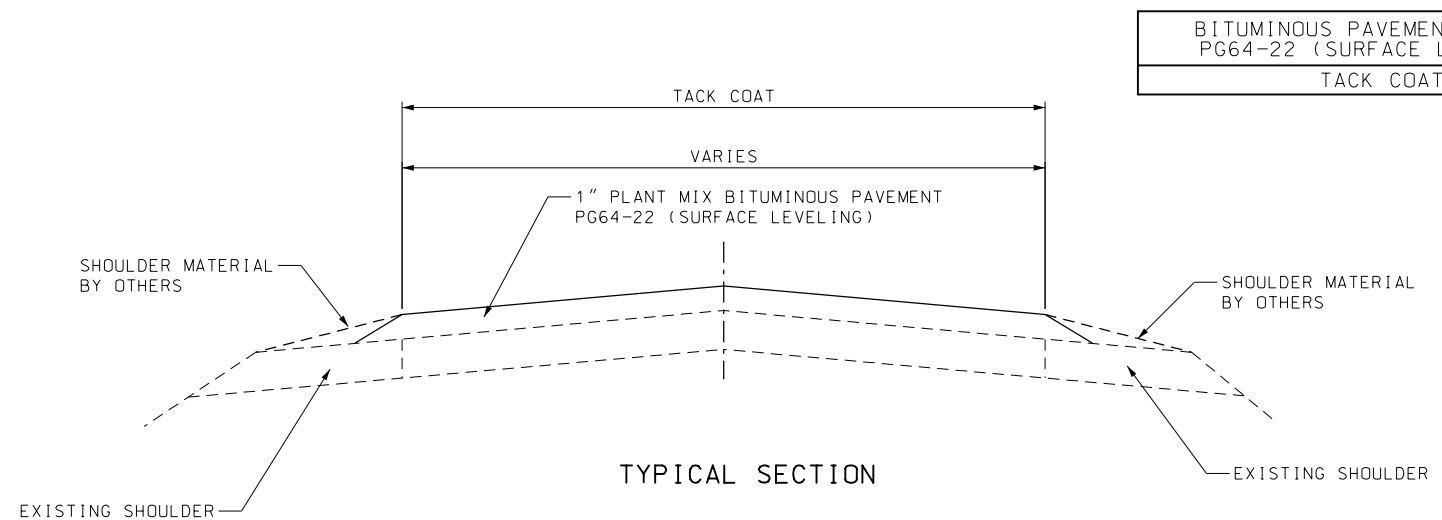
DESCRIPTION	DATE

MISSOURI HIGHWAYS AND TRANSPORTATION COMMISSION



105 WEST CAPITOL
JEFFERSON CITY, MO 65102
1-888-ASK-MODOT (1-888-275-6636)

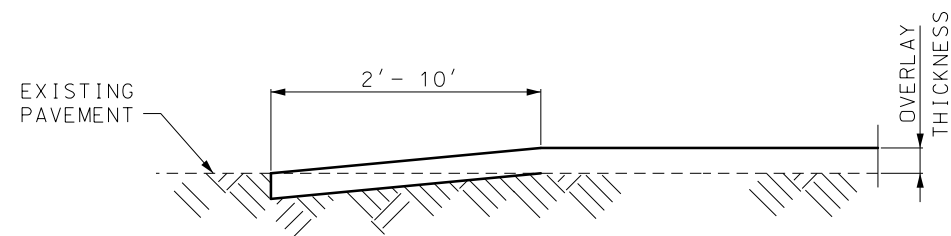
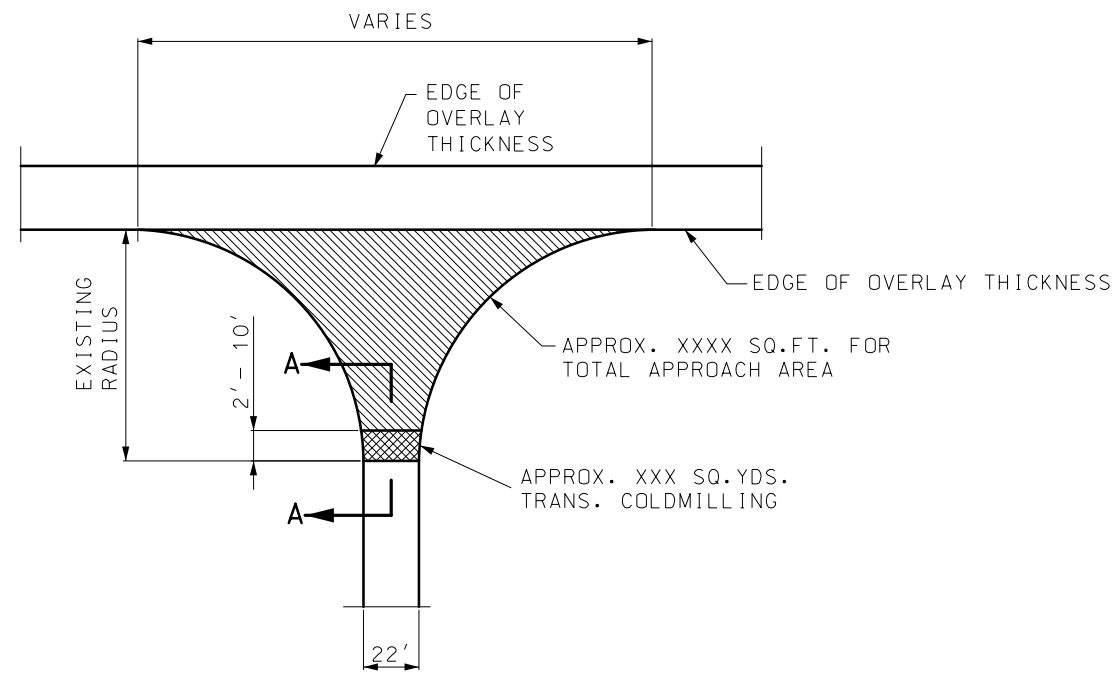
IF A SEAL IS PRESENT ON THIS SHEET IT HAS BEEN ELECTRONICALLY SEALED AND DATED.



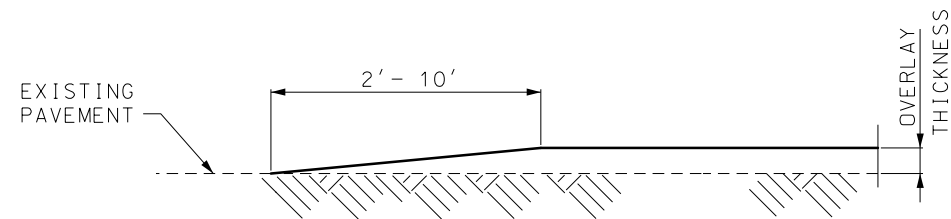
BITUMINOUS PAVEMENT MIXTURE PG64-22 (SURFACE LEVELING)	XX TON/YD ³
TACK COAT	.08 GAL/YD ²

NOTE:
SURFACE PLACEMENT SHALL BE ONE PASS PER LANE
NO S.E. CORRECTION.
FINAL STRIPING BY OTHERS.

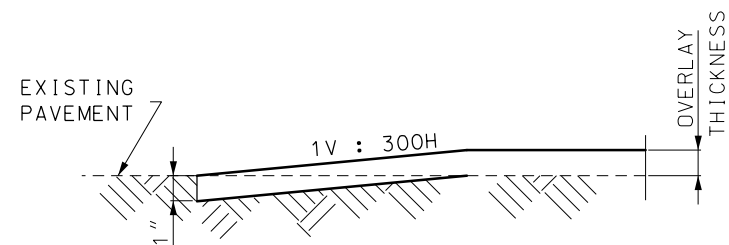
TYPICAL SECTION
SHEET 1 OF 1



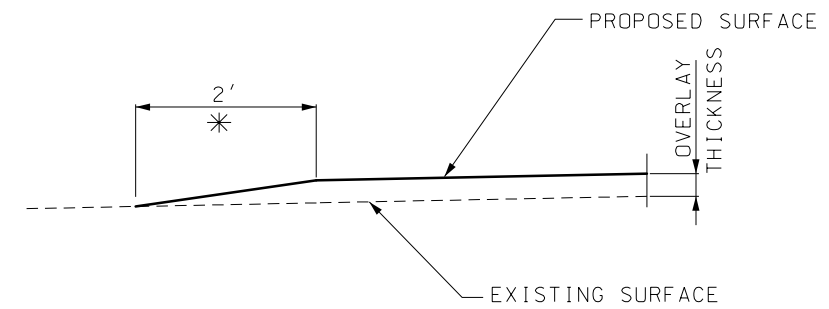
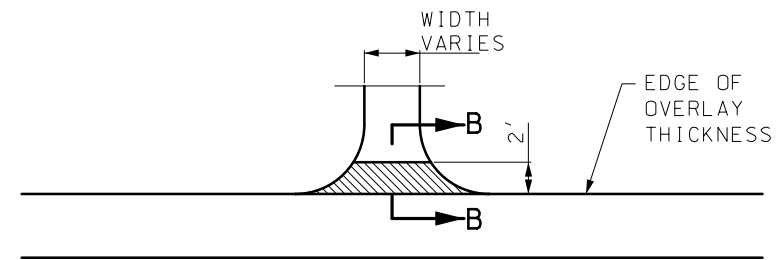
SECTION A-A
TYPICAL STATE ROUTE JUNCTION
(COLDMILLED TRANSITION)



ALTERNATE SECTION A-A
TYPICAL STATE ROUTE JUNCTION
(TAPERED TRANSITION)



TRAVELWAY DEPTH TRANSITIONS
BEGINNING AND END OF PROJECT
AND EXCEPTIONS



SECTION B-B
TYPICAL ENTRANCE
(FIELD, PRIVATE OR COUNTY ROAD)
* TAPER AT 1:1 FOR FIELD ENTRANCE

"THIS MEDIA SHOULD NOT BE CONSIDERED A CERTIFIED DOCUMENT."

DATE PREPARED
3/13/2018

ROUTE STATE
DISTRICT SHEET NO.
MO 4

COUNTY

JOB NO.

CONTRACT ID.

PROJECT NO.

BRIDGE NO.

DESCRIPTION

DATE

DESCRIPTION

DATE

DESCRIPTION

DATE

DESCRIPTION

DATE

DESCRIPTION

DATE

DESCRIPTION

DATE

DESCRIPTION

DATE

DESCRIPTION

DATE

DESCRIPTION

DATE

DESCRIPTION

DATE

DESCRIPTION

DATE

DESCRIPTION

DATE

DESCRIPTION

DATE

DESCRIPTION

DATE

DESCRIPTION

DATE

DESCRIPTION

DATE

DESCRIPTION


DATE

DESCRIPTION

DATE

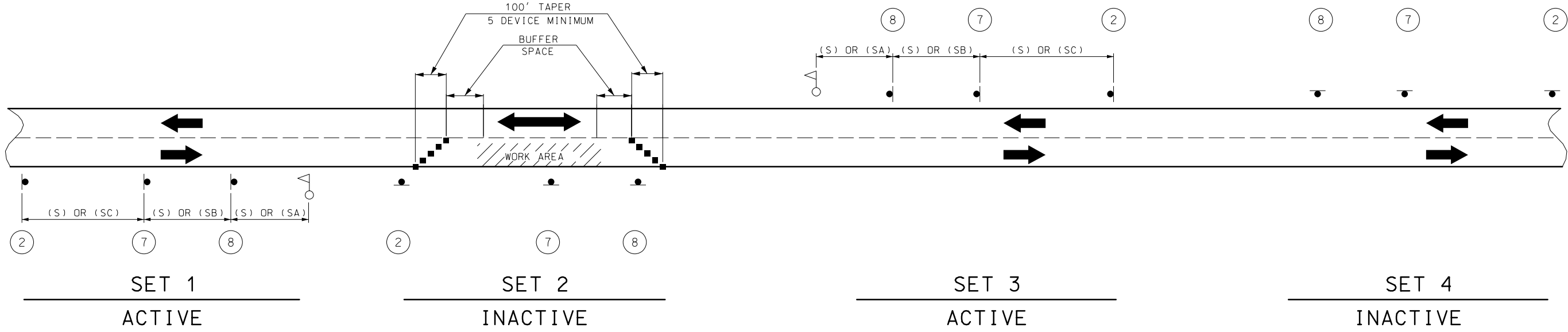
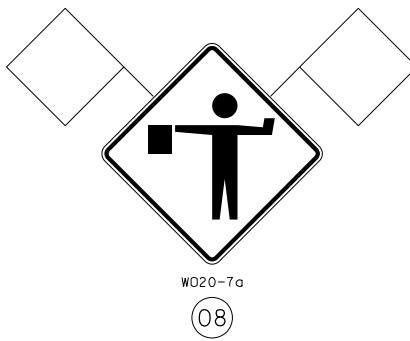
DESCRIPTION

IF A SEAL IS PRESENT ON THIS SHEET IT HAS BEEN ELECTRONICALLY SEALED AND DATED.

MISSOURI HIGHWAYS AND TRANSPORTATION COMMISSION

 105 WEST CAPITOL
 JEFFERSON CITY, MO 65102
 1-888-ASK-MODOT (1-888-275-6636)



SIGN 53, "PILOT CAR FOLLOW ME" SHALL BE IN CONTRACTOR'S RESPONSIBILITY WHEN IN USE DURING OPERATION.



SIGN SETS 1 AND 3 ARE ACTIVE AND (I.E., SIGNS FACE ONCOMING TRAFFIC).

SIGN SETS 2 AND 4 ARE INACTIVE (I.E., SIGNS DO NOT FACE EITHER DIRECTION OF TRAFFIC) WHEN THE RESURFACING OPERATION IS LOCATED BETWEEN SIGN SETS 1 AND 3.

WHEN SIGN SETS 2 AND 4 ARE ACTIVE, SIGN SETS 1 AND 3 BECOME INACTIVE AND ARE ADVANCED TO BECOME SETS 2 AND 4 WITH SIGN LEGENDS TURNED AWAY FROM BOTH DIRECTIONS OF TRAFFIC. WHEN THE RESURFACING OPERATION ADVANCES TO BETWEEN SIGN SETS 2 AND 4, SIGN SETS 2 AND 4 BECOME ACTIVE (I.E., NEW SIGN SETS 2 AND 4) AND SIGN SETS 1 AND 3 ADVANCED IN THE DIRECTION OF THE OPERATION (I.E., NEW SIGN SETS 1 AND 3).

- - CHANNELIZERS
- △ - FLAGGER

NOTES:
DAYLIGHT FLAGGING OPERATIONS ONLY.

CHANNELIZING DEVICES LOCATED DOWNSTREAM OF THE ONE-LANE, TWO-WAY TAPER ARE OPTIONAL. THESE DEVICES SHOULD BE ELIMINATED WHEN THEIR USE WILL REDUCE THE USABLE LANE WIDTH, INCLUDING ANY ACCEPTABLE SHOULDERS, TO LESS THAN 10' OR WILL SIGNIFICANTLY AFFECT THE RESURFACING OPERATION.

FLAG ASSEMBLIES FOR SIGNS WILL BE PAID FOR AS EACH PER SIGN, EXCEPT FOR SIGN W020-7a WHICH IS SUBSIDIARY TO THE SIGN.

SPEED	SIGN SPACING (FT.) (1)	
	NON-DIVIDED HIGHWAYS (S)	DIVIDED HIGHWAYS (S)
0-35	200	200
40-45	350	500
50-55	500	1000
60-70	1000	(SA)-1000 (SB)-1500 (SC)-2640

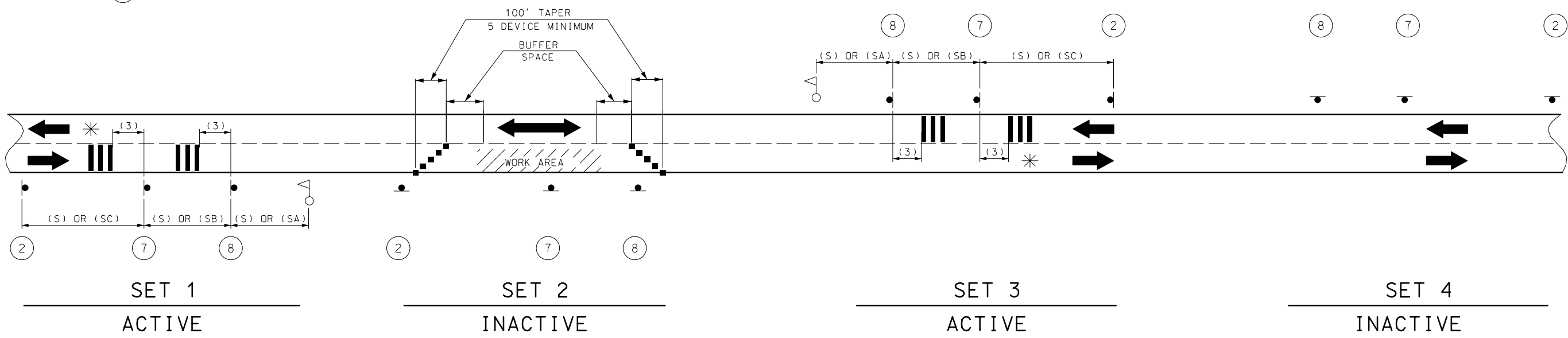
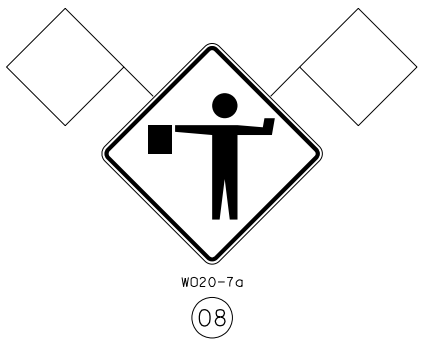
PERMANENT POSTED SPEED LIMIT (MPH)	BUFFER SPACE LENGTH (FT)
0 - 35	280
40 - 45	400
50 - 55	560
60 - 70	840

NOTES:
(1) SPACING BETWEEN SIGNS, BETWEEN LAST SIGN AND FLAGGER, BEGINNING OF TAPER OR SIGNED CONDITION.
SPACINGS MAY BE ADJUSTED AS NECESSARY TO MEET FIELD CONDITIONS.

"THIS MEDIA SHOULD NOT BE CONSIDERED A CERTIFIED DOCUMENT."
 DATE PREPARED: 3/21/2018
 ROUTE: STATE MO
 DISTRICT: SHEET NO. 6
 COUNTY:
 JOB NO.:
 CONTRACT ID.:
 PROJECT NO.:
 BRIDGE NO.:
 DESCRIPTION:
 DATE:
 MISSOURI HIGHWAYS AND TRANSPORTATION COMMISSION
 105 WEST CAPITOL JEFFERSON CITY, MO 65102
 1-888-ASK-MODOT (1-888-275-6636)
 IF A SEAL IS PRESENT ON THIS SHEET IT HAS BEEN ELECTRONICALLY SEALED AND DATED.
 REV.



SIGN 53, "PILOT CAR FOLLOW ME" SHALL BE IN CONTRACTOR'S RESPONSIBILITY WHEN IN USE DURING OPERATION.



SIGN SETS 1 AND 3 ARE ACTIVE AND (I.E., SIGNS FACE ONCOMING TRAFFIC).

SIGN SETS 2 AND 4 ARE INACTIVE (I.E., SIGNS DO NOT FACE EITHER DIRECTION OF TRAFFIC) WHEN THE RESURFACING OPERATION IS LOCATED BETWEEN SIGN SETS 1 AND 3.

WHEN SIGN SETS 2 AND 4 ARE ACTIVE, SIGN SETS 1 AND 3 BECOME INACTIVE AND ARE ADVANCED TO BECOME SETS 2 AND 4 WITH SIGN LEGENDS TURNED AWAY FROM BOTH DIRECTIONS OF TRAFFIC. WHEN THE RESURFACING OPERATION ADVANCES TO BETWEEN SIGN SETS 2 AND 4, SIGN SETS 2 AND 4 BECOME ACTIVE (I.E., NEW SIGN SETS 1 AND 3) AND SIGN SETS 1 AND 3 ADVANCED IN THE DIRECTION OF THE OPERATION (I.E., NEW SIGN SETS 2 AND 4).

- - CHANNELIZERS
- △ - FLAGGER
- ▬▬▬ - TEMPORARY SHORT TERM RUMBLES

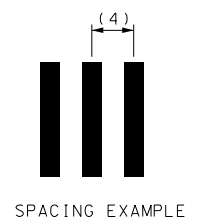
NOTES:
DAYLIGHT FLAGGING OPERATIONS ONLY.

CHANNELIZING DEVICES LOCATED DOWNSTREAM OF THE ONE-LANE, TWO-WAY TAPER ARE OPTIONAL. THESE DEVICES SHOULD BE ELIMINATED WHEN THEIR USE WILL REDUCE THE USABLE LANE WIDTH, INCLUDING ANY ACCEPTABLE SHOULDERS, TO LESS THAN 10' OR WILL SIGNIFICANTLY AFFECT THE RESURFACING OPERATION.

FLAG ASSEMBLIES FOR SIGNS WILL BE PAID FOR AS EACH PER SIGN, EXCEPT FOR SIGN W020-7a WHICH IS SUBSIDIARY TO THE SIGN.

SHORT-TERM RUMBLES STRIPS		
SPEED MPH	DISTANCE (3)	SPACING (4)
0-45 (OPTIONAL)	120 FT	10 FT
50-55	160 FT	15 FT
60-70	200 FT	20 FT

* SECOND SET OF TEMPORARY RUMBLES OPTIONAL



SPEED	SIGN SPACING (FT.) (1)	
	NON-DIVIDED HIGHWAYS (S)	DIVIDED HIGHWAYS (S)
PERMANENT POSTED (MPH)		
0-35	200	200
40-45	350	500
50-55	500	1000
60-70	1000	(SA)-1000 (SB)-1500 (SC)-2640

NOTES:
(1) SPACING BETWEEN SIGNS, BETWEEN LAST SIGN AND FLAGGER, BEGINNING OF TAPER OR SIGNED CONDITION.

SPACINGS MAY BE ADJUSTED AS NECESSARY TO MEET FIELD CONDITIONS.

PERMANENT POSTED SPEED LIMIT (MPH)	BUFFER SPACE LENGTH (FT)
0 - 35	280
40 - 45	400
50 - 55	560
60 - 70	840

USE THIS SHEET 2 OF 4 ONLY WHEN TEMPORARY RUMBLES ARE REQUIRED

TRAFFIC CONTROL SHEET 2 OF 4

"THIS MEDIA SHOULD NOT BE CONSIDERED A CERTIFIED DOCUMENT."
 DATE PREPARED: 3/23/2018
 ROUTE: STATE: MO
 DISTRICT: SHEET NO.: 6
 COUNTY:
 JOB NO.:
 CONTRACT ID.:
 PROJECT NO.:
 BRIDGE NO.:
 DESCRIPTION:
 DATE:
 MISSOURI HIGHWAYS AND TRANSPORTATION COMMISSION
 105 WEST CAPITOL JEFFERSON CITY, MO 65102
 1-888-ASK-MODOT (1-888-275-6636)
 MoDOT
 IF A SEAL IS PRESENT ON THIS SHEET IT HAS BEEN ELECTRONICALLY SEALED AND DATED.
 REV.

"THIS MEDIA SHOULD NOT BE CONSIDERED A CERTIFIED DOCUMENT."

DATE PREPARED
3/13/2018

ROUTE STATE
DISTRICT SHEET NO.
MO 7

COUNTY

JOB NO.

CONTRACT ID.

PROJECT NO.

BRIDGE NO.

DATE	DESCRIPTION

MISSOURI HIGHWAYS AND TRANSPORTATION COMMISSION
 105 WEST CAPITOL JEFFERSON CITY, MO 65102
 1-888-ASK-MODOT (1-888-275-6636)

REV.

SPEED PERMANENT POSTED (MPH)	SIGN SPACING (FT.)	
	NON-DIVIDED HIGHWAYS (S)	DIVIDED HIGHWAYS (S)
0-35	200	200
40-45	350	500
50-55	500	1000
60-70	1000	(SA)-1000 (SB)-1500 (SC)-2640

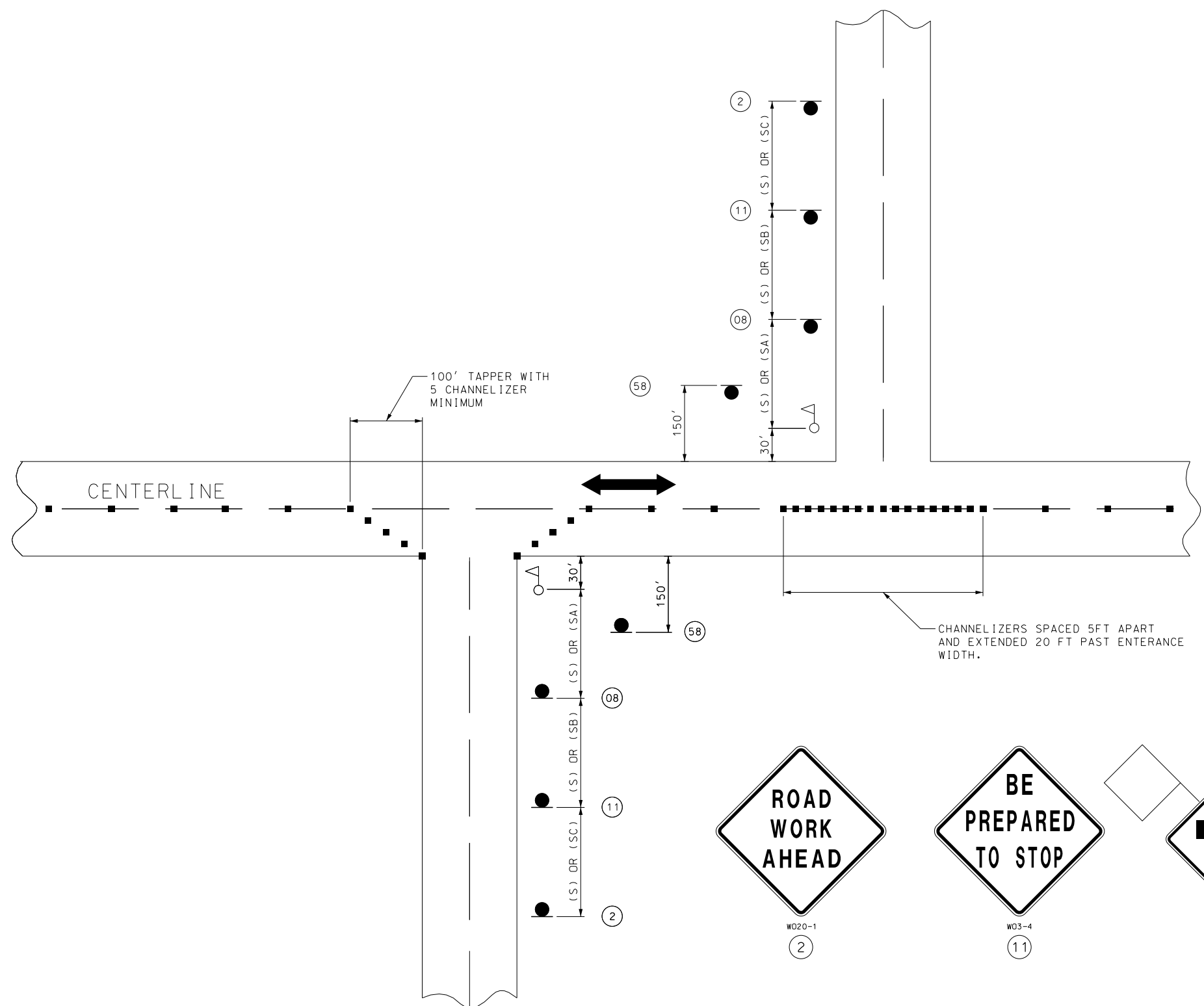
DISTANCE MAY BE ADJUSTED ACCORDING TO FIELD CONDITIONS.

NOTES:
WARNING SIGNS SHALL BE ERECTED AT EACH INTERSECTION WITH ANOTHER STATE HIGHWAY WITHIN THE WORK ZONE.

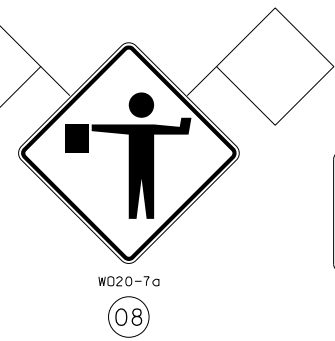
ADDITIONAL WARNING SIGNS SHALL BE ERECTED AT OTHER INTERSECTIONS WITHIN THE WORK ZONE, AS DIRECTED BY THE ENGINEER.

■ - CHANNELIZERS (AS SPECIFIED)

△ - FLAGGER



SIDE ROADS ENTERING WORK ZONES



SIGN 58, SHALL BE PLACED AT ALL SIDE ROADS WHEN IN USE DURING OPERATION.

SIGN 60, TO BE USED IN PRIVATE DRIVEWAYS TO ENHANCE WORK ZONE SIGNING. SEE SPECIAL PROVISIONS.

TRAFFIC CONTROL SHEET 3 OF 4

