

DESIGN DESIGNATION

A.A.D.T - XXXX = XXXX  
 V = XX M.P.H

# MISSOURI HIGHWAYS AND TRANSPORTATION COMMISSION

## PLANS FOR PROPOSED STATE HIGHWAY

### INDEX OF SHEETS

DESCRIPTION	SHEET NUMBER
TITLE SHEET -----	1
TYPICAL SECTIONS (TS) (1 SHEET)--	2
QUANTITIES (QU) (1 SHEET)-----	3
SPECIAL SHEET (SS)-----	4
TRAFFIC CONTROL SHEETS (TC)-----	5-8

"THIS MEDIA SHOULD NOT BE CONSIDERED A CERTIFIED DOCUMENT."

DATE PREPARED  
5/4/2017

ROUTE	STATE
	MO

DISTRICT	SHEET NO.
	1

COUNTY

JOB NO.

CONTRACT ID.

PROJECT NO.

BRIDGE NO.

DATE	DESCRIPTION

### LENGTH OF PROJECT

BEGINNING OF PROJECT \_\_\_\_\_

END OF PROJECT \_\_\_\_\_

APPARENT LENGTH \_\_\_\_\_ MILES

EQUATIONS AND EXCEPTIONS:

TOTAL CORRECTIONS \_\_\_\_\_

NET LENGTH OF PROJECT \_\_\_\_\_

STATE LENGTH \_\_\_\_\_

MISSOURI HIGHWAYS AND TRANSPORTATION COMMISSION

105 WEST CAPITOL  
JEFFERSON CITY, MO 65102  
1-888-ASK-MODOT (1-888-275-6636)

IF A SEAL IS PRESENT ON THIS SHEET IT HAS BEEN ELECTRONICALLY SEALED AND DATED.



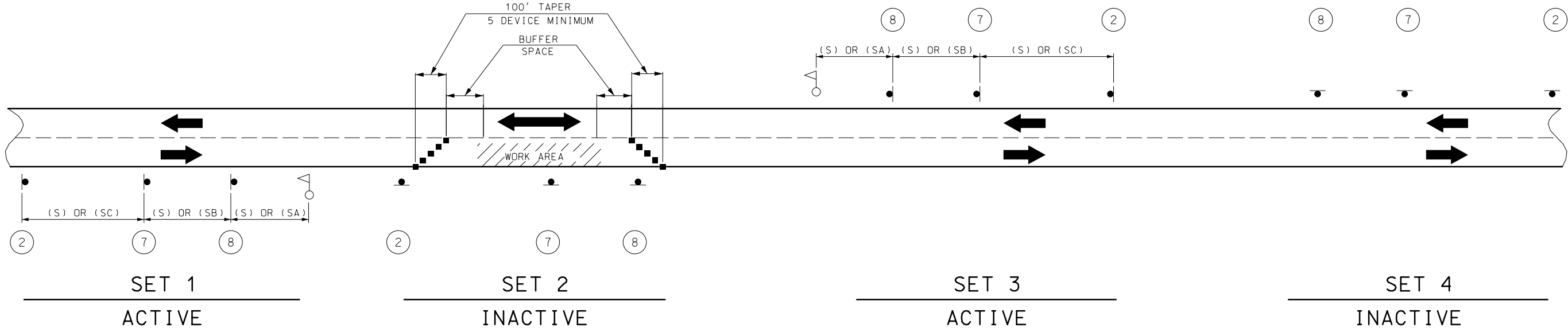
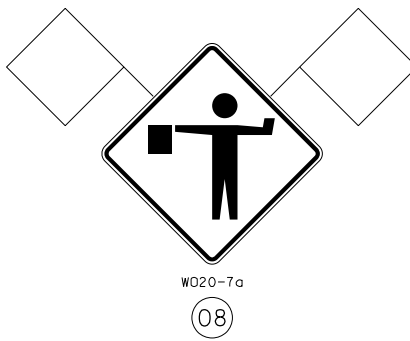








SIGN 53, "PILOT CAR FOLLOW ME" SHALL BE IN CONTRACTOR'S RESPONSIBILITY WHEN IN USE DURING OPERATION.



SIGN SETS 1 AND 3 ARE ACTIVE AND (I.E., SIGNS FACE ONCOMING TRAFFIC).

SIGN SETS 2 AND 4 ARE INACTIVE (I.E., SIGNS DO NOT FACE EITHER DIRECTION OF TRAFFIC) WHEN THE RESURFACING OPERATION IS LOCATED BETWEEN SIGN SETS 1 AND 3.

WHEN SIGN SETS 2 AND 4 ARE ACTIVE, SIGN SETS 1 AND 3 BECOME INACTIVE AND ARE ADVANCED TO BECOME SETS 2 AND 4 WITH SIGN LEGENDS TURNED AWAY FROM BOTH DIRECTIONS OF TRAFFIC. WHEN THE RESURFACING OPERATION ADVANCES TO BETWEEN SIGN SETS 2 AND 4, SIGN SETS 2 AND 4 BECOME ACTIVE (I.E., NEW SIGN SETS 2 AND 4) AND SIGN SETS 1 AND 3 ADVANCED IN THE DIRECTION OF THE OPERATION (I.E., NEW SIGN SETS 1 AND 3).

- - CHANNELIZERS
- △ - FLAGGER

NOTES:  
DAYLIGHT FLAGGING OPERATIONS ONLY.

CHANNELIZING DEVICES LOCATED DOWNSTREAM OF THE ONE-LANE, TWO-WAY TAPER ARE OPTIONAL. THESE DEVICES SHOULD BE ELIMINATED WHEN THEIR USE WILL REDUCE THE USABLE LANE WIDTH, INCLUDING ANY ACCEPTABLE SHOULDERS, TO LESS THAN 10' OR WILL SIGNIFICANTLY AFFECT THE RESURFACING OPERATION.

FLAG ASSEMBLIES FOR SIGNS WILL BE PAID FOR AS EACH PER SIGN, EXCEPT FOR SIGN W020-7a WHICH IS SUBSIDIARY TO THE SIGN.

SPEED	SIGN SPACING (FT.) (1)	
	NON-DIVIDED HIGHWAYS (S)	DIVIDED HIGHWAYS (S)
0-35	200	200
40-45	350	500
50-55	500	1000
60-70	1000	(SA)-1000 (SB)-1500 (SC)-2640

NOTES:  
(1) SPACING BETWEEN SIGNS, BETWEEN LAST SIGN AND FLAGGER, BEGINNING OF TAPER OR SIGNED CONDITION.  
SPACINGS MAY BE ADJUSTED AS NECESSARY TO MEET FIELD CONDITIONS.

PERMANENT POSTED SPEED LIMIT (MPH)	BUFFER SPACE LENGTH (FT)
0 - 35	280
40 - 45	400
50 - 55	560
60 - 70	840

"THIS MEDIA SHOULD NOT BE CONSIDERED A CERTIFIED DOCUMENT."  
 DATE PREPARED 5/4/2017  
 ROUTE STATE MO  
 DISTRICT SHEET NO. 6  
 COUNTY  
 JOB NO.  
 CONTRACT ID.  
 PROJECT NO.  
 BRIDGE NO.  
 DESCRIPTION  
 DATE  
 MISSOURI HIGHWAYS AND TRANSPORTATION COMMISSION  
 MoDOT  
 105 WEST CAPITOL JEFFERSON CITY, MO 65102  
 1-888-ASK-MODOT (1-888-275-6636)  
 IF A SEAL IS PRESENT ON THIS SHEET IT HAS BEEN ELECTRONICALLY SEALED AND DATED.  
 REV.



