

Missouri Department of Transportation

General Headquarters
 PO Box 270
 Jefferson City, Missouri 65102
 www.modot.org

Customer Service
 Toll Free in Missouri
 (888-275-6636)
 573-751-2551

Outside Missouri
 (888-ASK MODOT)
 (888-275-6636)
 573-751-2551

Highways and Transportation
 Commission
 MoDOT Director
 573-751-2824
 573-751-4622

Highway Safety
 Over Dimension/Over Weight Permits
 Motor Carrier Services
 800-800-BEET
 800-877-8409
 866-831-MCRS

District Offices

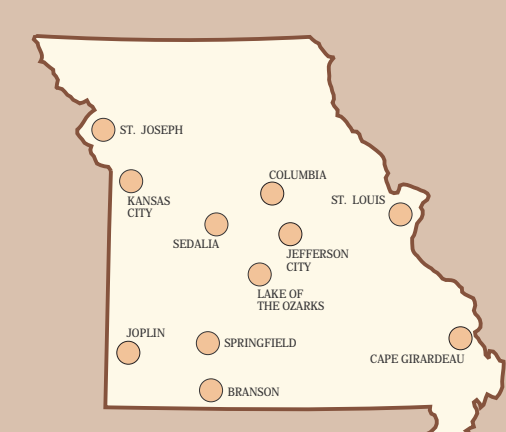
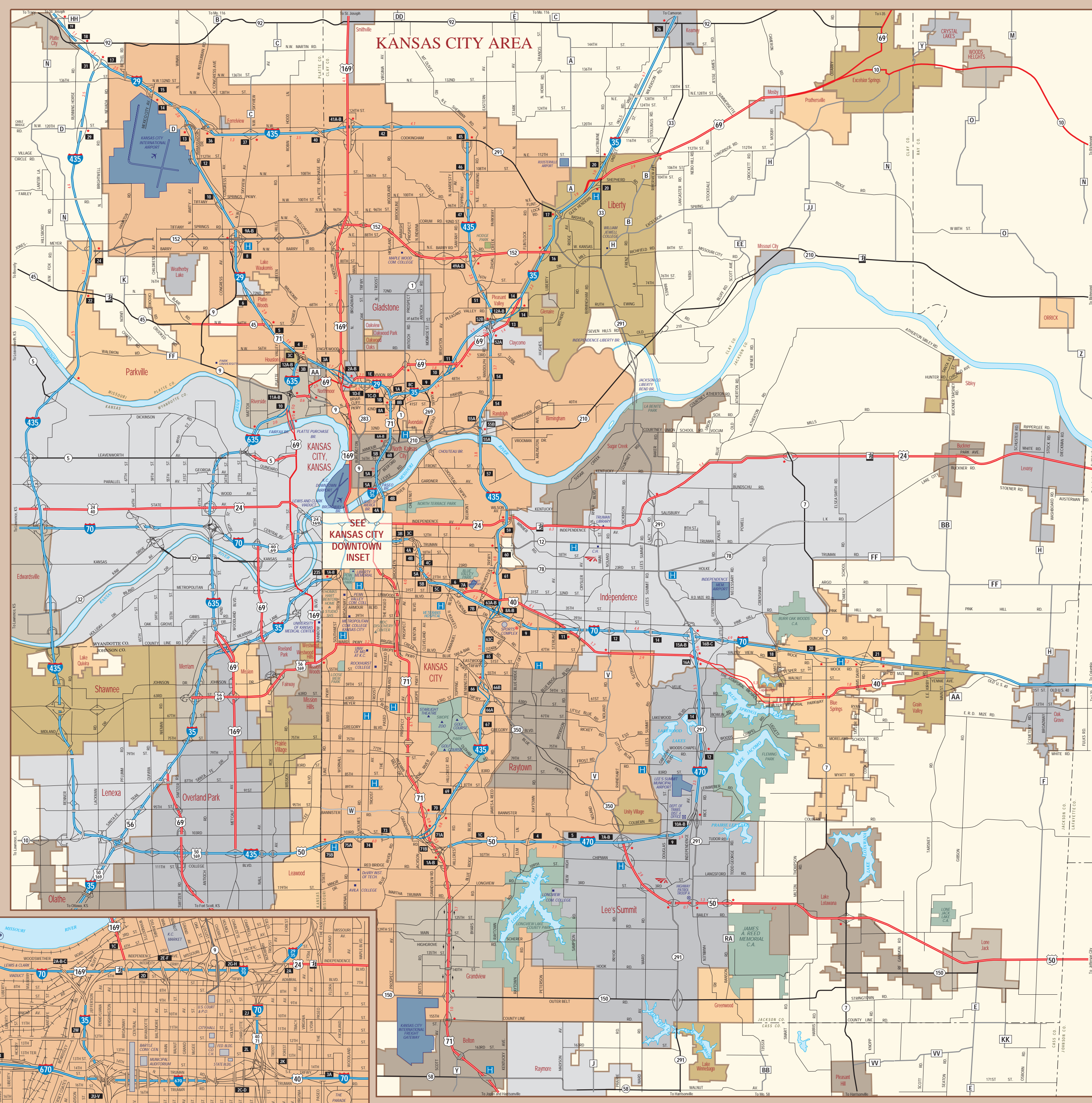
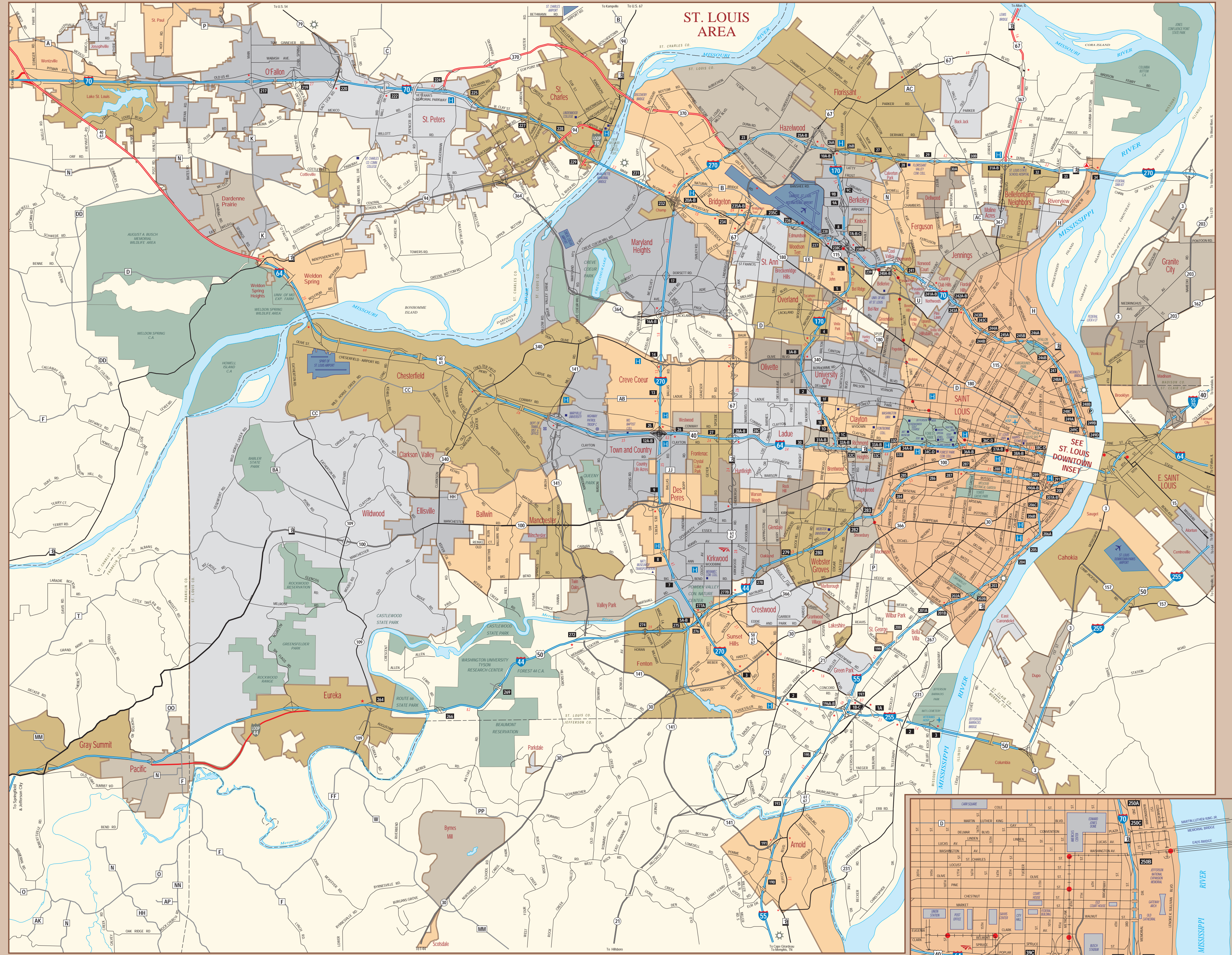
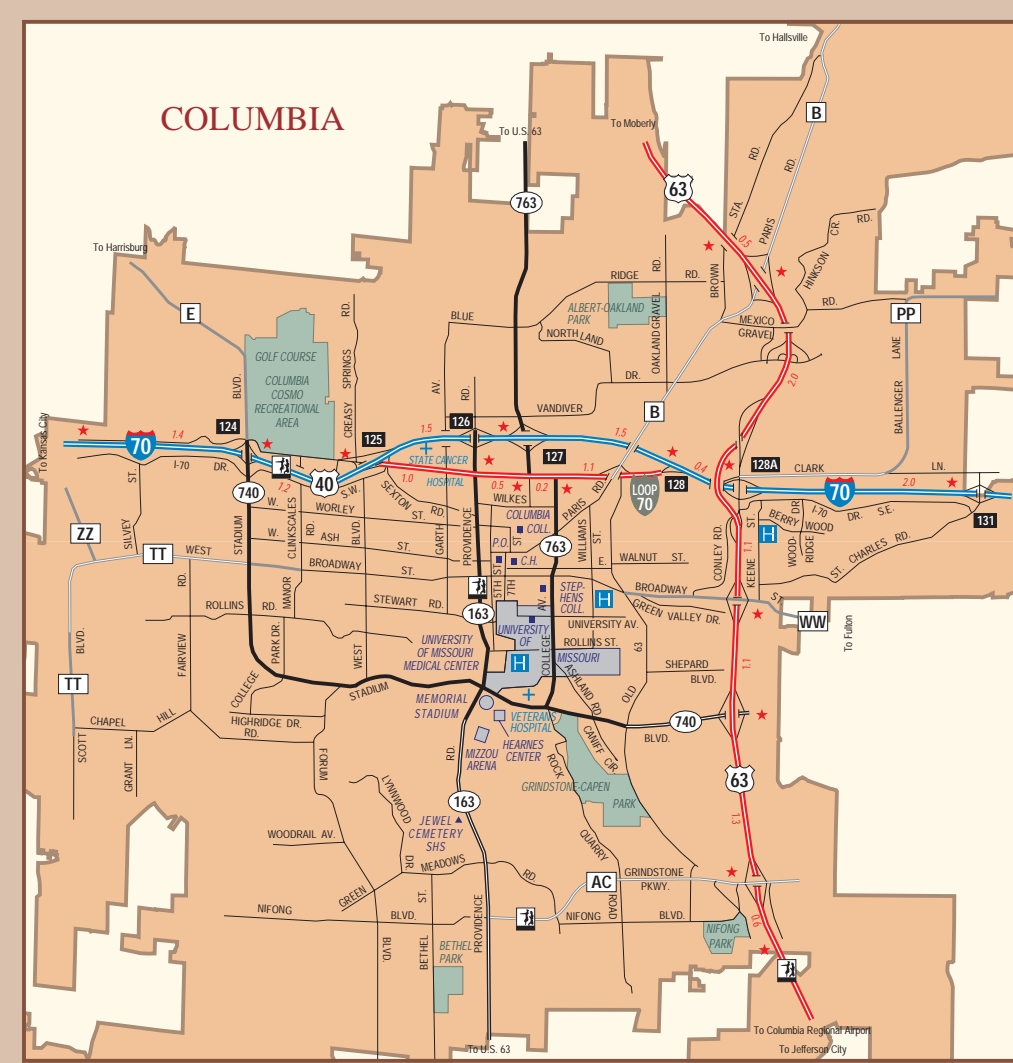
St. Joseph	3602 N. Belt Highway	816-387-2350
Macon	902 N. Missouri Street	660-385-3176
Hannibal	1711 South Route 61	573-248-2490
Lee's Summit	600 N.E. Colbern Road	816-625-6500
Jefferson City	1511 Missouri Boulevard	573-751-3322
Chesterfield	1590 Woodlake Drive	314-340-4100
Joplin	3901 E. 2nd Street	417-629-3300
Springfield	3025 E. Kearney	417-895-7600
Willow Springs	910 Springfield Road	417-469-3134
Sikeston	2673 N. Main Street	573-472-5333



Missouri State Highway Patrol

Emergency 800-525-5555 or *55 on a cellular phone
 Non-emergency (V/TDD) 573-751-5113
 Road Conditions Report 800-222-6400

Headquarters	Jefferson City	1510 E. Elm	573-751-3313
Troop A	Lee's Summit	304 S.E. Blue Parkway	816-622-0800
Troop B	Macon	308 Pine Crest Drive	660-385-2132
Troop C	St. Louis	599 S. Mason Rd	314-340-4000
Troop D	Park Hills	U.S. 67 (Satellite)	573-431-0166
Troop E	Springfield	3131 E. Kearney	417-895-6668
Troop F	Carthage	4284 S. Grand (Satellite)	417-359-1500
Troop G	Poplar Bluff	4947 Highway 67 North	573-840-9500
Troop H	Sikeston	105 Keystone (Satellite)	573-472-5200
Troop I	Jefferson City	2920 N. Shamrock Rd	573-751-1000
Troop J	Willow Springs	Business Route 60	417-469-3121
Troop K	St. Joseph	3525 N. Belt Highway	816-387-2345
Troop L	Rolla	Route E, Nagegami Rd	573-368-2345



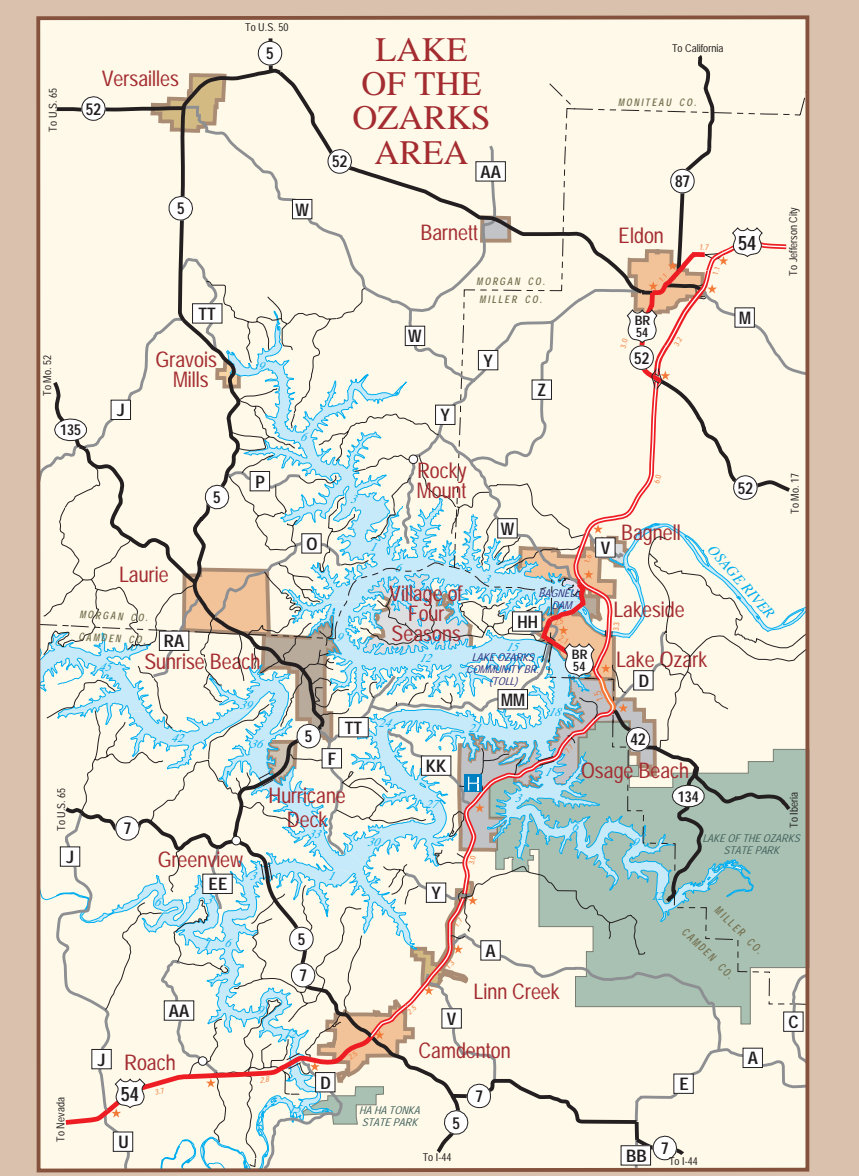
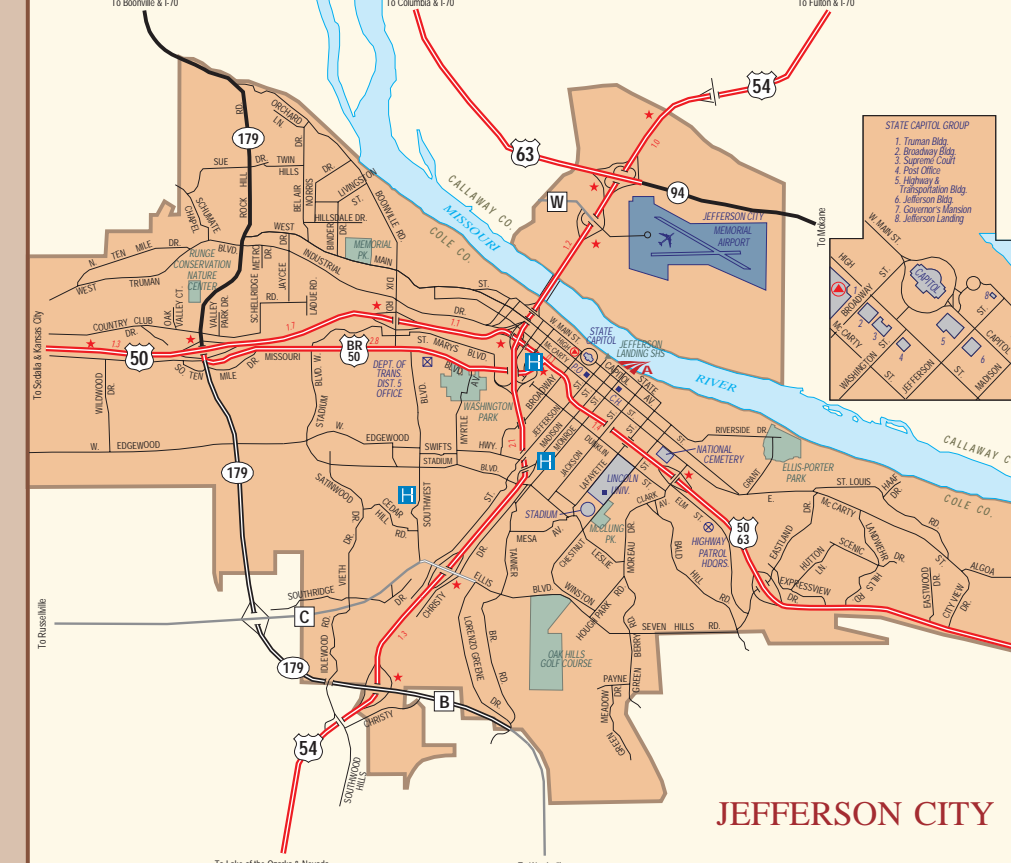
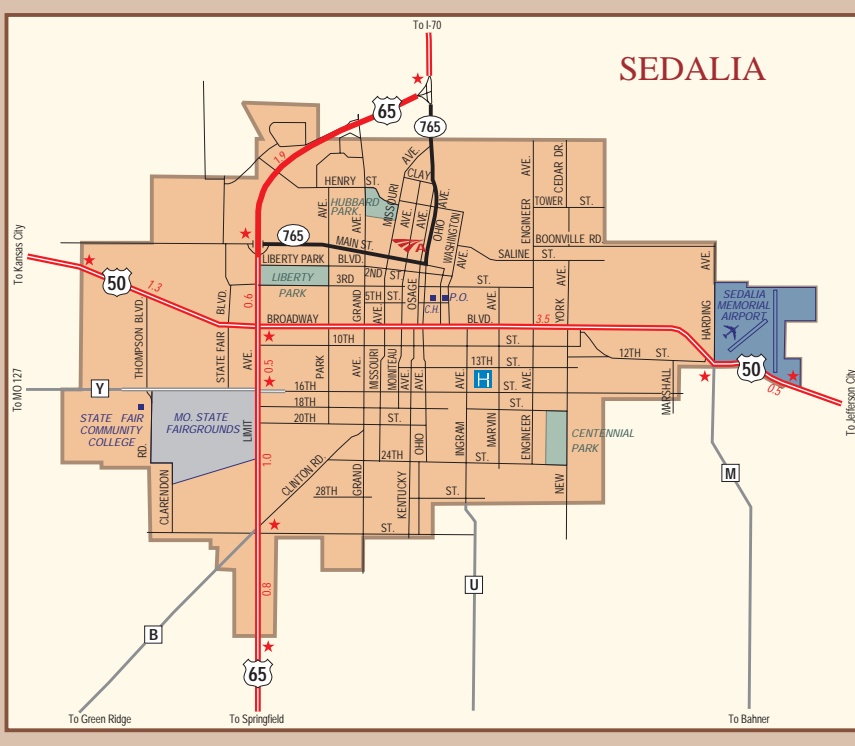
LEGEND

SYMBOLS

- DEPT. OF TRANSPORTATION
- STATE PATROL OFFICE
- COURTHOUSE
- POST OFFICE
- TRAIL HEAD
- STATE PARK
- STATE STATUE

SYMBOLS SHOWN REFER TO THE CITY INDICES ONLY. ALL OTHER SYMBOLS ARE REFERENCED FROM THE MAIN LEGEND ON THE STATE SIDE OF THE MAP.

Source: Credits
 Photo by Mark Engelbrecht



In the Rearview Mirror

MoDOT recently completed a massive upgrade of Missouri's busiest highways. Thanks to Missourians' support of Constitutional Amendment 3 in November 2004, MoDOT delivered 2,200 miles of smoother, safer roads in two years, a full year ahead of schedule!

About 86 percent of Missouri's population lives within 10 miles of the smoother roads, although all Missourians are reaping the benefit of this aggressive highway improvement project.

Rounding out the improvements package are:

- brighter stripes and signs;
- reflective pavement markers separating lanes;
- improved shoulders with rumble strips; and
- safer guardrails.



The Road Ahead

Improving the rest of the major highways in the state (3,200 miles) and repairing or replacing 800 of Missouri's worst bridges are two major transportation initiatives in the works. These exciting transportation projects are possible because of your support. Thank you, Missouri!

Playing It Safe

- In Missouri, 68 percent of the people who die in traffic crashes are not wearing a seat belt.
- Missouri law requires children under 8 years of age to be in an appropriate child safety seat or booster seat unless they weigh 80 pounds or are 4-feet, 9-inches tall. Call 1-800-800-2358 or visit www.modot.org for more information.
- Injuring or killing a highway worker could cost \$10,000, as well as a lost license for a year. The difference is you. Drive smart, and arrive alive.
- Missouri law requires drivers to slow their vehicle down and to move over when safe to do so when approaching emergency vehicles working on the highways.



Along the Way

Missouri has a large and complex transportation system that is more than roads and bridges. It includes rail, barge, air and public transportation, and walking and bicycling.

Here are some interesting facts about getting around in Missouri:

- Missouri is home to four million licensed drivers, ranking as 17th in the nation.
- With 32,423 miles of state highway, Missouri ranks seventh in the United States.
- The Show-Me State claims the most major river bridges of any state: 55.
- The cost to build one mile of a four-lane highway ranges from \$4 million to \$10 million.
- About 247,000 tons of salt are used each winter to keep Missouri roads clear.
- The cost to pick up litter on Missouri highways runs about \$5.5 million a year.
- Public transit annually provides more than 64 million trips for Missourians.



Travel Resources

Water Patrol	General Information	573-751-3333
Division of Tourism	To Order a Missouri Vacation Planner visit www.visitmo.com	
Department of Revenue	Driver & Motor Vehicle Licensing www.dor.mo.gov	573-751-4600
Department of Conservation	Nature Areas and Other Inquiries www.dnr.mo.gov	573-751-4115
Department of Natural Resources	Park and Historic Site Information www.mostatetparks.com	800-334-6946 800-379-2419 (TDD)
Amtrak	Tickets and Information www.amtrak.com	800-USA-RAIL
MO Relay Service	Communication assistance for the deaf, hard of hearing and speech-impaired	800-735-2966 (TDD) 800-735-2466 (voice)

