

DESIGN DESIGNATION  
 A.A.D.T - XXXX = XXXX  
 V = XX M.P.H

# MISSOURI HIGHWAYS AND TRANSPORTATION COMMISSION

## PLANS FOR PROPOSED STATE HIGHWAY

DESCRIPTION	SHEET NUMBER
TITLE SHEET -----	1
TYPICAL SECTIONS (TS) (1 SHEET)--	2
QUANTITIES (QU) (1 SHEET)-----	3
SPECIAL SHEET (SS)-----	4
TRAFFIC CONTROL SHEETS (TC)-----	5-9

"THIS MEDIA SHOULD NOT BE CONSIDERED A CERTIFIED DOCUMENT."

DATE PREPARED 3/18/2020	
ROUTE	STATE MO
DISTRICT	SHEET NO. 1
COUNTY	
JOB NO.	
CONTRACT ID.	
PROJECT NO.	
BRIDGE NO.	

DATE	DESCRIPTION

MISSOURI HIGHWAYS AND TRANSPORTATION COMMISSION

105 WEST CAPITOL  
JEFFERSON CITY, MO 65102  
1-888-ASK-MODOT (1-888-275-6636)

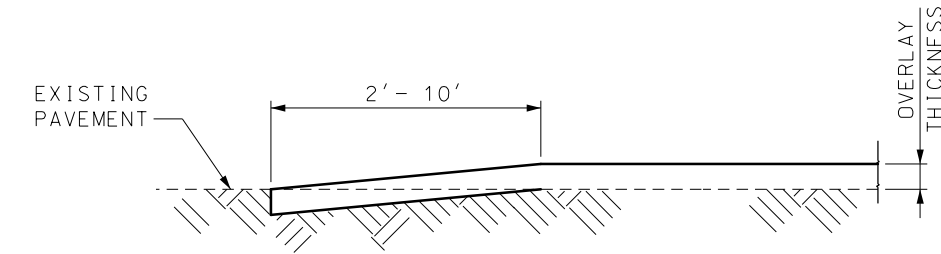
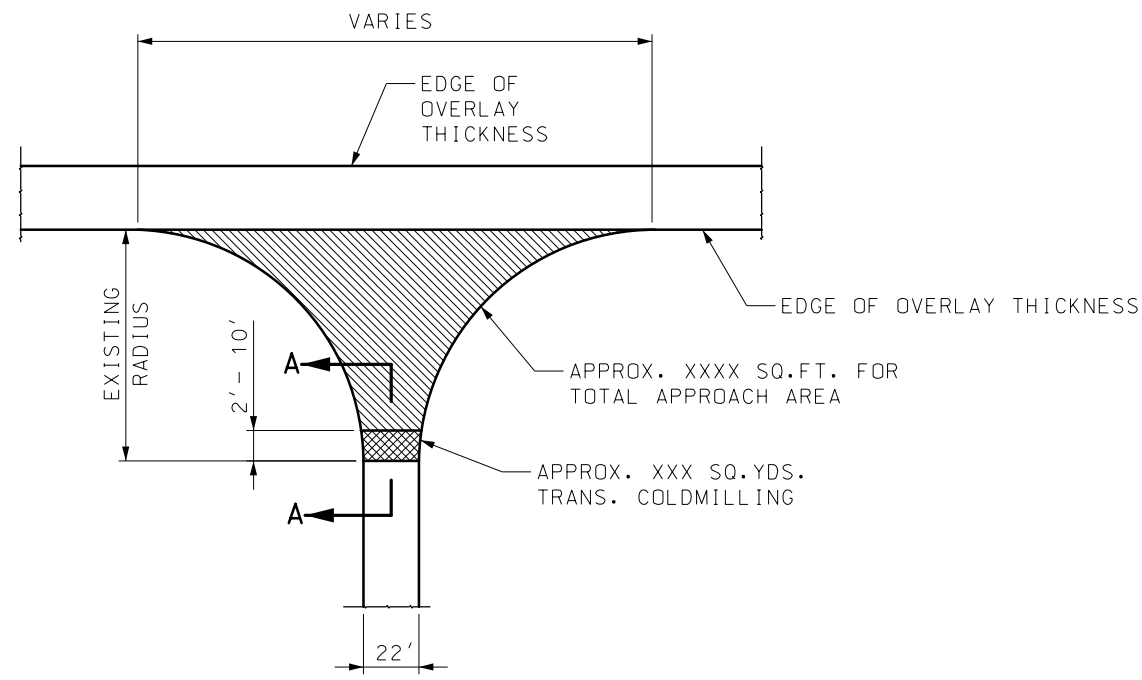
### LENGTH OF PROJECT

BEGINNING OF PROJECT	
END OF PROJECT	
APPARENT LENGTH	MILES
EQUATIONS AND EXCEPTIONS:	
TOTAL CORRECTIONS	
NET LENGTH OF PROJECT	
STATE LENGTH	

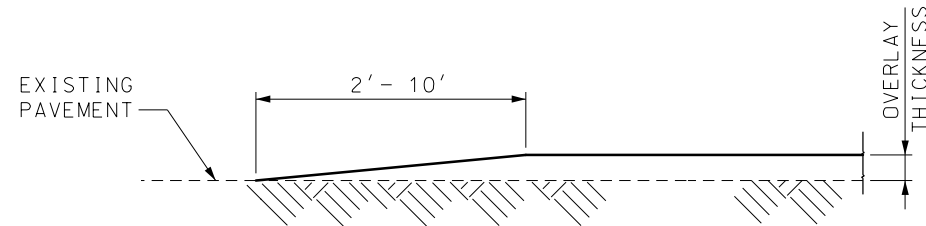
IF A SEAL IS PRESENT ON THIS SHEET IT HAS BEEN ELECTRONICALLY SEALED AND DATED.



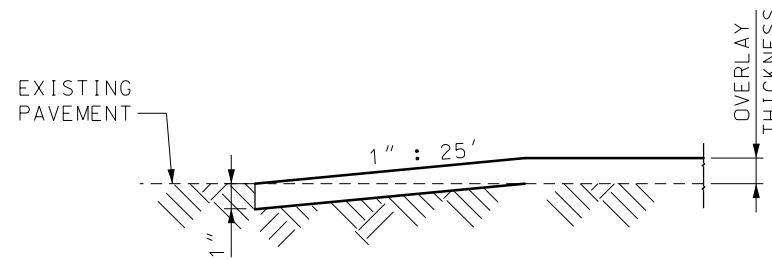




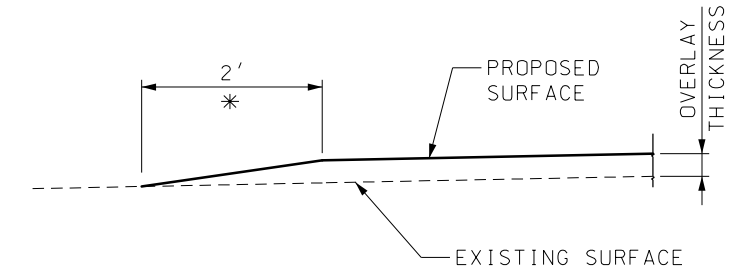
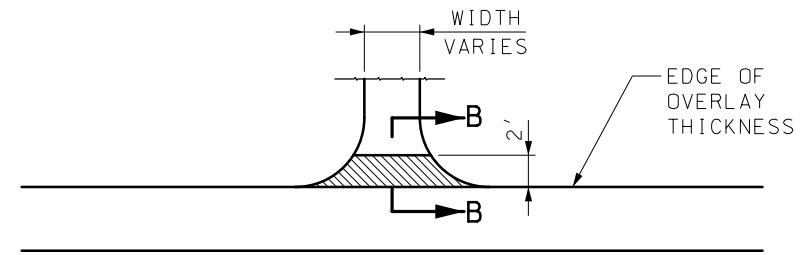
SECTION A-A  
TYPICAL STATE ROUTE JUNCTION  
(COLDMILLED TRANSITION)



ALTERNATE SECTION A-A  
TYPICAL STATE ROUTE JUNCTION  
(TAPERED TRANSITION)



TRAVELWAY DEPTH TRANSITIONS  
BEGINNING AND END OF PROJECT  
AND EXCEPTIONS



SECTION B-B  
TYPICAL ENTRANCE  
(FIELD, PRIVATE OR COUNTY ROAD)  
\* TAPER AT 1:1 FOR FIELD ENTRANCE

"THIS MEDIA SHOULD NOT BE CONSIDERED A CERTIFIED DOCUMENT."

DATE PREPARED  
3/18/2020

ROUTE STATE  
DISTRICT SHEET NO.  
MO 4

COUNTY

JOB NO.

CONTRACT ID.

PROJECT NO.

BRIDGE NO.

DESCRIPTION

DATE

DESCRIPTION

DATE

DESCRIPTION

DATE

DESCRIPTION

DATE

DESCRIPTION

DATE

DESCRIPTION

DATE

DESCRIPTION

DATE

DESCRIPTION

DATE

DESCRIPTION

DATE

DESCRIPTION

DATE

DESCRIPTION

DATE

DESCRIPTION

DATE

DESCRIPTION

DATE

DESCRIPTION

DATE

DESCRIPTION

DATE

DESCRIPTION

DATE

DESCRIPTION


DATE

DESCRIPTION

DATE

DESCRIPTION

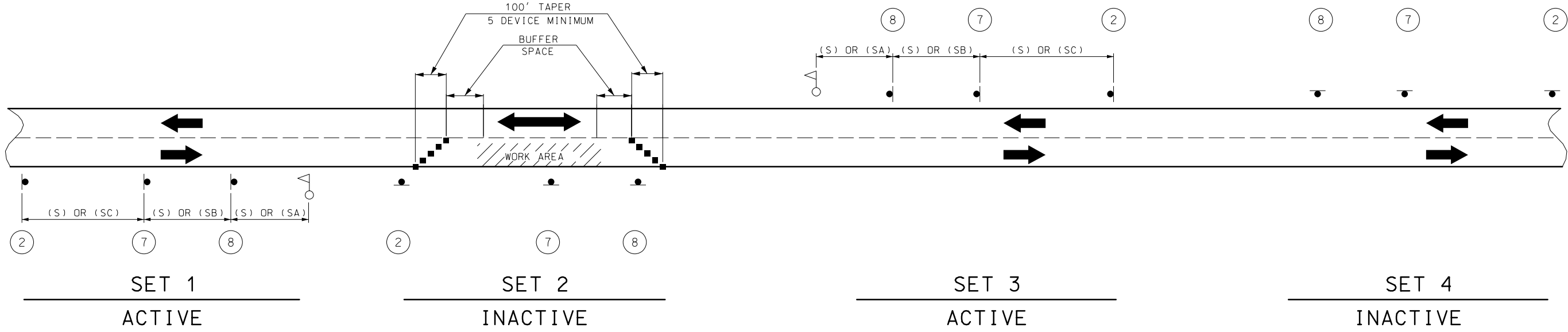
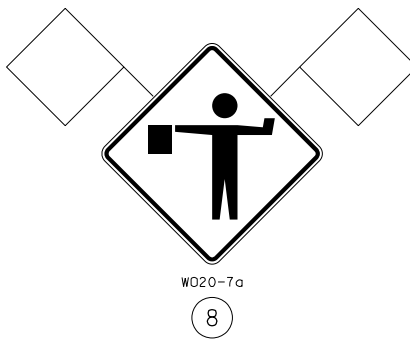
IF A SEAL IS PRESENT ON THIS SHEET IT HAS BEEN ELECTRONICALLY SEALED AND DATED.

MISSOURI HIGHWAYS AND TRANSPORTATION COMMISSION  
  
 105 WEST CAPITOL  
 JEFFERSON CITY, MO 65102  
 1-888-ASK-MODOT (1-888-275-6636)





SIGN 53, "PILOT CAR FOLLOW ME" SHALL BE IN CONTRACTOR'S RESPONSIBILITY WHEN IN USE DURING OPERATION.



SIGN SETS 1 AND 3 ARE ACTIVE AND (I.E., SIGNS FACE ONCOMING TRAFFIC).

SIGN SETS 2 AND 4 ARE INACTIVE (I.E., SIGNS DO NOT FACE EITHER DIRECTION OF TRAFFIC) WHEN THE RESURFACING OPERATION IS LOCATED BETWEEN SIGN SETS 1 AND 3.

WHEN SIGN SETS 2 AND 4 ARE ACTIVE, SIGN SETS 1 AND 3 BECOME INACTIVE AND ARE ADVANCED TO BECOME SETS 2 AND 4 WITH SIGN LEGENDS TURNED AWAY FROM BOTH DIRECTIONS OF TRAFFIC. WHEN THE RESURFACING OPERATION ADVANCES TO BETWEEN SIGN SETS 2 AND 4, SIGN SETS 2 AND 4 BECOME ACTIVE (I.E., NEW SIGN SETS 2 AND 4) AND SIGN SETS 1 AND 3 ADVANCED IN THE DIRECTION OF THE OPERATION (I.E., NEW SIGN SETS 1 AND 3).

- - CHANNELIZERS
- △ - FLAGGER

NOTES:  
DAYLIGHT FLAGGING OPERATIONS ONLY.

CHANNELIZING DEVICES LOCATED DOWNSTREAM OF THE ONE-LANE, TWO-WAY TAPER ARE OPTIONAL. THESE DEVICES SHOULD BE ELIMINATED WHEN THEIR USE WILL REDUCE THE USABLE LANE WIDTH, INCLUDING ANY ACCEPTABLE SHOULDERS, TO LESS THAN 10' OR WILL SIGNIFICANTLY AFFECT THE RESURFACING OPERATION.

FLAG ASSEMBLIES FOR SIGNS WILL BE PAID FOR AS EACH PER SIGN, EXCEPT FOR SIGN W020-7a WHICH IS SUBSIDIARY TO THE SIGN.

SPEED	SIGN SPACING (FT.) (1)	
	NON-DIVIDED HIGHWAYS (S)	DIVIDED HIGHWAYS (S)
0-35	200	200
40-45	350	500
50-55	500	1000
60-70	1000	(SA)-1000 (SB)-1500 (SC)-2640

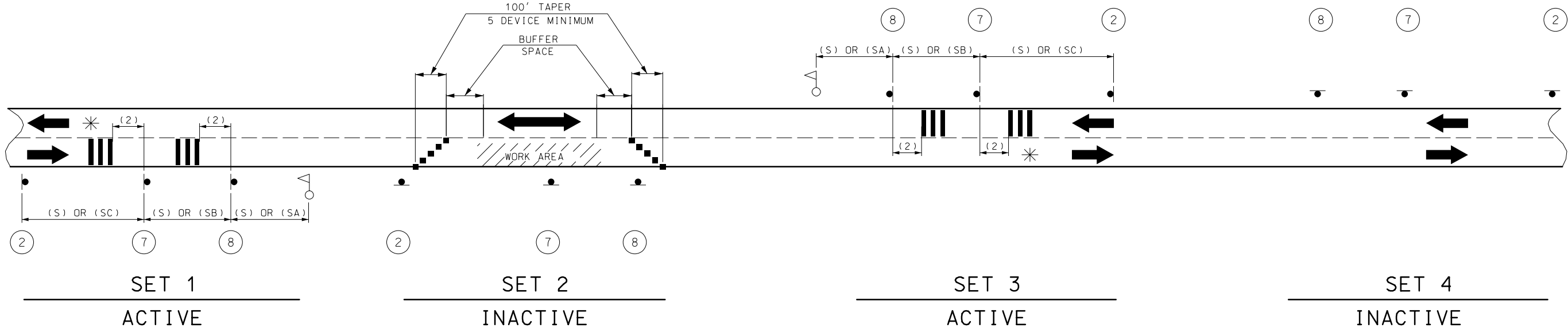
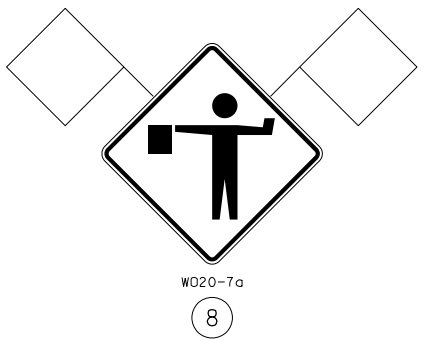
PERMANENT POSTED SPEED LIMIT (MPH)	BUFFER SPACE LENGTH (FT)
0 - 35	280
40 - 45	400
50 - 55	560
60 - 70	840

NOTES:  
(1) SPACING BETWEEN SIGNS, BETWEEN LAST SIGN AND FLAGGER, BEGINNING OF TAPER OR SIGNED CONDITION.  
SPACINGS MAY BE ADJUSTED AS NECESSARY TO MEET FIELD CONDITIONS.

"THIS MEDIA SHOULD NOT BE CONSIDERED A CERTIFIED DOCUMENT."  
 DATE PREPARED: 3/18/2020  
 ROUTE: STATE MO  
 DISTRICT: SHEET NO. 6  
 COUNTY:  
 JOB NO.:  
 CONTRACT ID.:  
 PROJECT NO.:  
 BRIDGE NO.:  
 DESCRIPTION:  
 DATE:  
 MISSOURI HIGHWAYS AND TRANSPORTATION COMMISSION  
 MoDOT  
 105 WEST CAPITOL JEFFERSON CITY, MO 65102  
 1-888-ASK-MODOT (1-888-275-6636)  
 IF A SEAL IS PRESENT ON THIS SHEET IT HAS BEEN ELECTRONICALLY SEALED AND DATED.  
 REV.



SIGN 53, "PILOT CAR FOLLOW ME" SHALL BE IN CONTRACTOR'S RESPONSIBILITY WHEN IN USE DURING OPERATION.



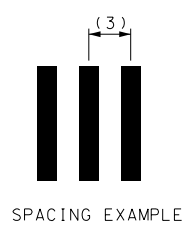
SIGN SETS 1 AND 3 ARE ACTIVE AND (I.E., SIGNS FACE ONCOMING TRAFFIC).

SIGN SETS 2 AND 4 ARE INACTIVE (I.E., SIGNS DO NOT FACE EITHER DIRECTION OF TRAFFIC) WHEN THE RESURFACING OPERATION IS LOCATED BETWEEN SIGN SETS 1 AND 3.

WHEN SIGN SETS 2 AND 4 ARE ACTIVE, SIGN SETS 1 AND 3 BECOME INACTIVE AND ARE ADVANCED TO BECOME SETS 2 AND 4 WITH SIGN LEGENDS TURNED AWAY FROM BOTH DIRECTIONS OF TRAFFIC. WHEN THE RESURFACING OPERATION ADVANCES TO BETWEEN SIGN SETS 2 AND 4, SIGN SETS 2 AND 4 BECOME ACTIVE (I.E., NEW SIGN SETS 2 AND 4) AND SIGN SETS 1 AND 3 ADVANCED IN THE DIRECTION OF THE OPERATION (I.E., NEW SIGN SETS 2 AND 4).

SHORT-TERM RUMBLE STRIPS		
SPEED MPH	DISTANCE (2)	SPACING (3)
0-45 (OPTIONAL)	120 FT	10 FT
50-55	160 FT	20 FT
60-70	200 FT	30 FT

\*SECOND SET OF TEMPORARY RUMBLES OPTIONAL



SPEED	SIGN SPACING (FT.) (1)	
	NON-DIVIDED HIGHWAYS (S)	DIVIDED HIGHWAYS (S)
PERMANENT POSTED (MPH)		
0-35	200	200
40-45	350	500
50-55	500	1000
60-70	1000	(SA)-1000 (SB)-1500 (SC)-2640

PERMANENT POSTED SPEED LIMIT (MPH)	BUFFER SPACE LENGTH (FT)
0 - 35	280
40 - 45	400
50 - 55	560
60 - 70	840

- - CHANNELIZERS
- △ - FLAGGER
- ▬ - TEMPORARY SHORT TERM RUMBLE STRIPS

NOTES:  
DAYLIGHT FLAGGING OPERATIONS ONLY.

CHANNELIZING DEVICES LOCATED DOWNSTREAM OF THE ONE-LANE, TWO-WAY TAPER ARE OPTIONAL. THESE DEVICES SHOULD BE ELIMINATED WHEN THEIR USE WILL REDUCE THE USABLE LANE WIDTH, INCLUDING ANY ACCEPTABLE SHOULDERS, TO LESS THAN 10' OR WILL SIGNIFICANTLY AFFECT THE RESURFACING OPERATION.

FLAG ASSEMBLIES FOR SIGNS WILL BE PAID FOR AS EACH PER SIGN, EXCEPT FOR SIGN W020-7a WHICH IS SUBSIDIARY TO THE SIGN.

NOTES:  
(1) SPACING BETWEEN SIGNS, BETWEEN LAST SIGN AND FLAGGER, BEGINNING OF TAPER OR SIGNED CONDITION.  
SPACINGS MAY BE ADJUSTED AS NECESSARY TO MEET FIELD CONDITIONS.

USE THIS SHEET 2 OF 5 ONLY WHEN TEMPORARY RUMBLES ARE REQUIRED. ALSO ADD PAY ITEMS TO QUANTITIES SHEET.

"THIS MEDIA SHOULD NOT BE CONSIDERED A CERTIFIED DOCUMENT."  
 DATE PREPARED: 3/24/2020  
 ROUTE: STATE MO  
 DISTRICT: SHEET NO. 6  
 COUNTY:  
 JOB NO.:  
 CONTRACT ID.:  
 PROJECT NO.:  
 BRIDGE NO.:  
 DESCRIPTION:  
 DATE:  
 MISSOURI HIGHWAYS AND TRANSPORTATION COMMISSION  
 105 WEST CAPITOL JEFFERSON CITY, MO 65102  
 1-888-ASK-MODOT (1-888-275-6636)  
 MoDOT  
 IF A SEAL IS PRESENT ON THIS SHEET IT HAS BEEN ELECTRONICALLY SEALED AND DATED.  
 REV.

"THIS MEDIA SHOULD NOT BE CONSIDERED A CERTIFIED DOCUMENT."

DATE PREPARED  
3/18/2020

ROUTE STATE  
MO

DISTRICT SHEET NO.  
7

COUNTY

JOB NO.

CONTRACT ID.

PROJECT NO.

BRIDGE NO.

DESCRIPTION

DATE

MISSOURI HIGHWAYS AND TRANSPORTATION COMMISSION

105 WEST CAPITOL JEFFERSON CITY, MO 65102 1-888-ASK-MODOT (1-888-275-6636)

MODOT

IF A SEAL IS PRESENT ON THIS SHEET IT HAS BEEN ELECTRONICALLY SEALED AND DATED.

REV.

SPEED PERMANENT POSTED (MPH)	SIGN SPACING (FT.)	
	NON-DIVIDED HIGHWAYS (S)	DIVIDED HIGHWAYS (S)
0-35	200	200
40-45	350	500
50-55	500	1000
60-70	1000	(SA)-1000 (SB)-1500 (SC)-2640

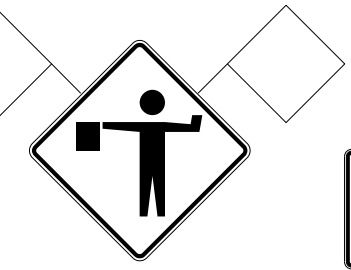
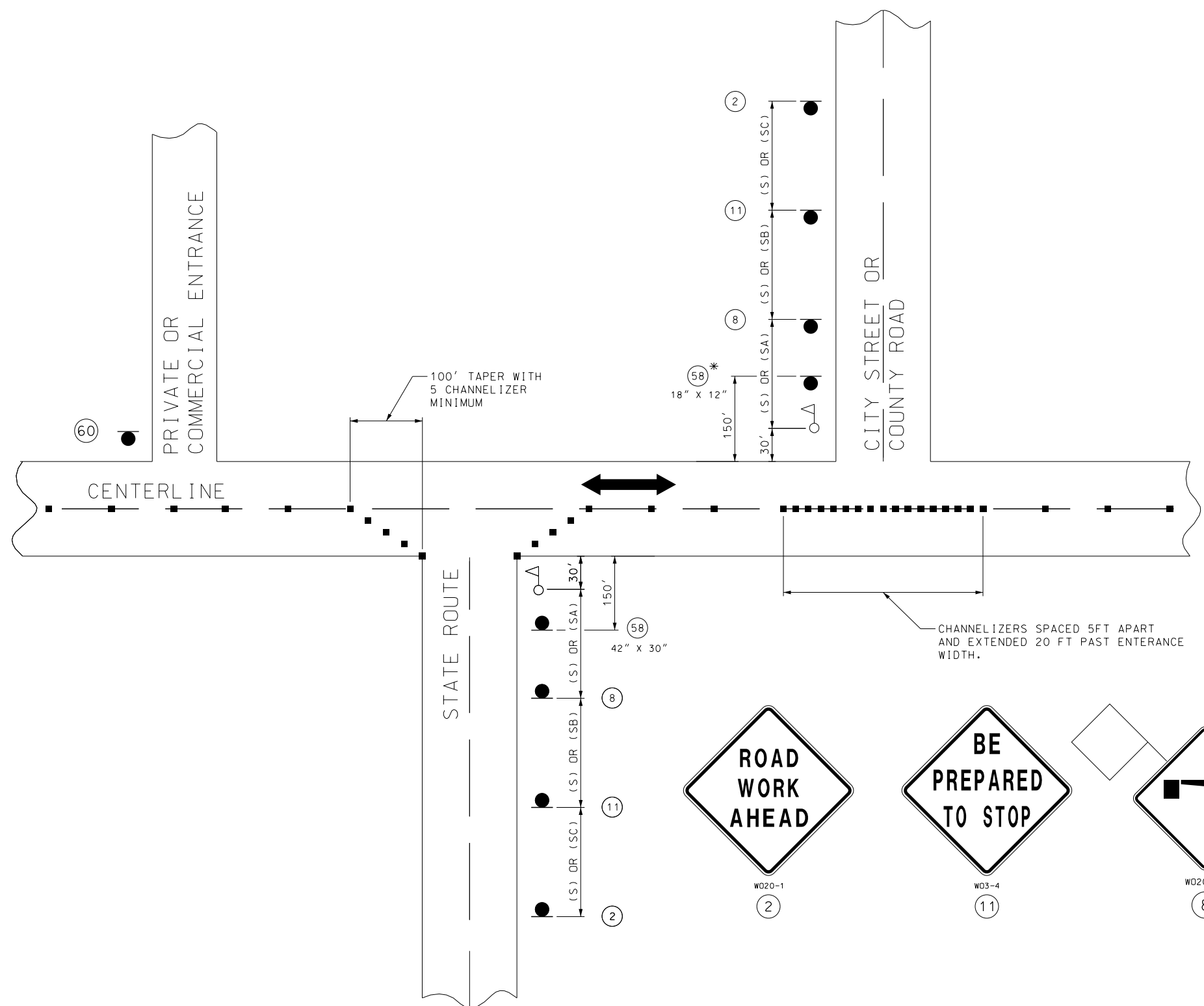
DISTANCE MAY BE ADJUSTED ACCORDING TO FIELD CONDITIONS.

NOTES:  
WARNING SIGNS SHALL BE ERECTED AT EACH INTERSECTION WITH ANOTHER STATE HIGHWAY WITHIN THE WORK ZONE.

ADDITIONAL WARNING SIGNS SHALL BE ERECTED AT OTHER INTERSECTIONS WITHIN THE WORK ZONE, AS DIRECTED BY THE ENGINEER.

■ - CHANNELIZERS (AS SPECIFIED)

△ - FLAGGER



SHALL BE USED ON ALL STATE ROUTES AND MAY BE USED ON ANY NON-STATE ROUTES, AS DETERMINED BY THE ENGINEER.

SHALL ONLY BE USED AT PRIVATE AND COMMERCIAL ENTRANCES. SEE SPECIAL PROVISIONS.

\* THE SMALLER 18" X 12" SIGN 58 IS USED ON ALL OTHER NON-STATE ROUTES (CITY STREETS, COUNTY ROADS, ETC.).

SIDE ROADS ENTERING WORK ZONES

TRAFFIC CONTROL SHEET 3 OF 5



"THIS MEDIA SHOULD NOT BE CONSIDERED A CERTIFIED DOCUMENT."

DATE PREPARED  
3/23/2020

ROUTE STATE  
MO

DISTRICT SHEET NO.  
8

COUNTY

JOB NO.

CONTRACT ID.

PROJECT NO.

BRIDGE NO.

DESCRIPTION

DATE

DESCRIPTION

DATE

DESCRIPTION

DATE

DESCRIPTION

DATE

DESCRIPTION

DATE

DESCRIPTION

DATE

DESCRIPTION

DATE

DESCRIPTION

DATE

DESCRIPTION

DATE

DESCRIPTION

DATE

DESCRIPTION

DATE

DESCRIPTION

DATE

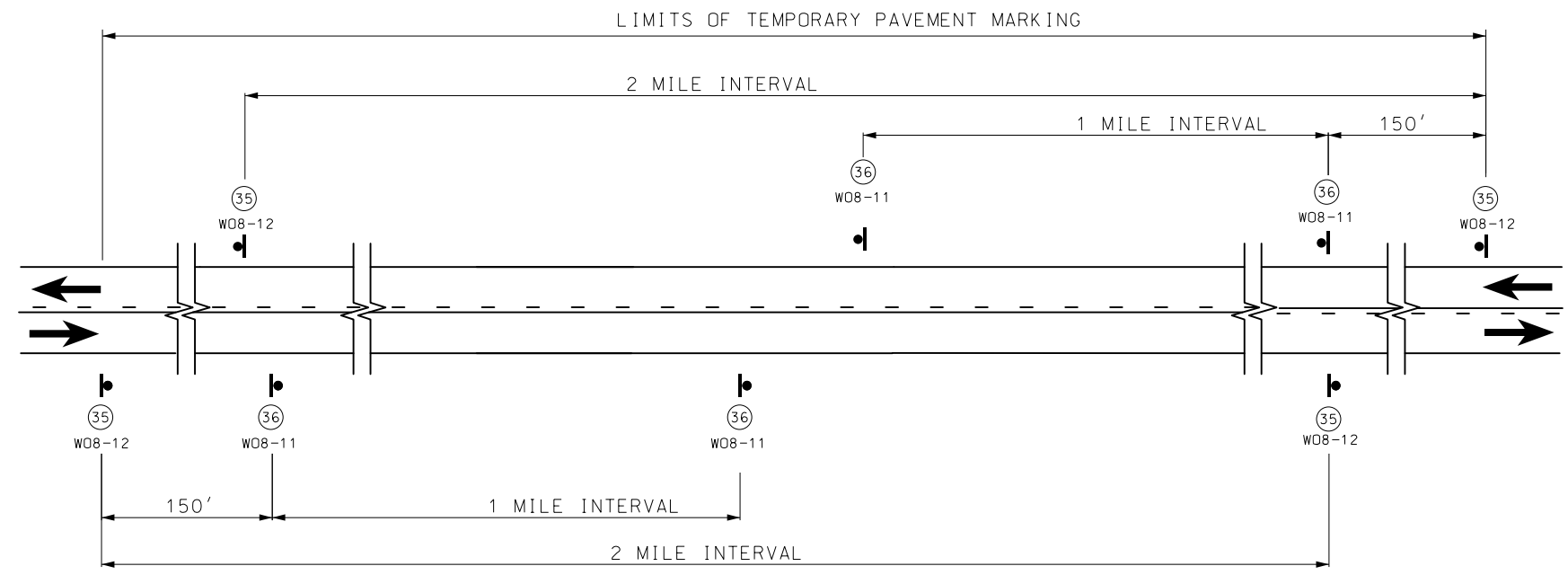
DESCRIPTION

DATE

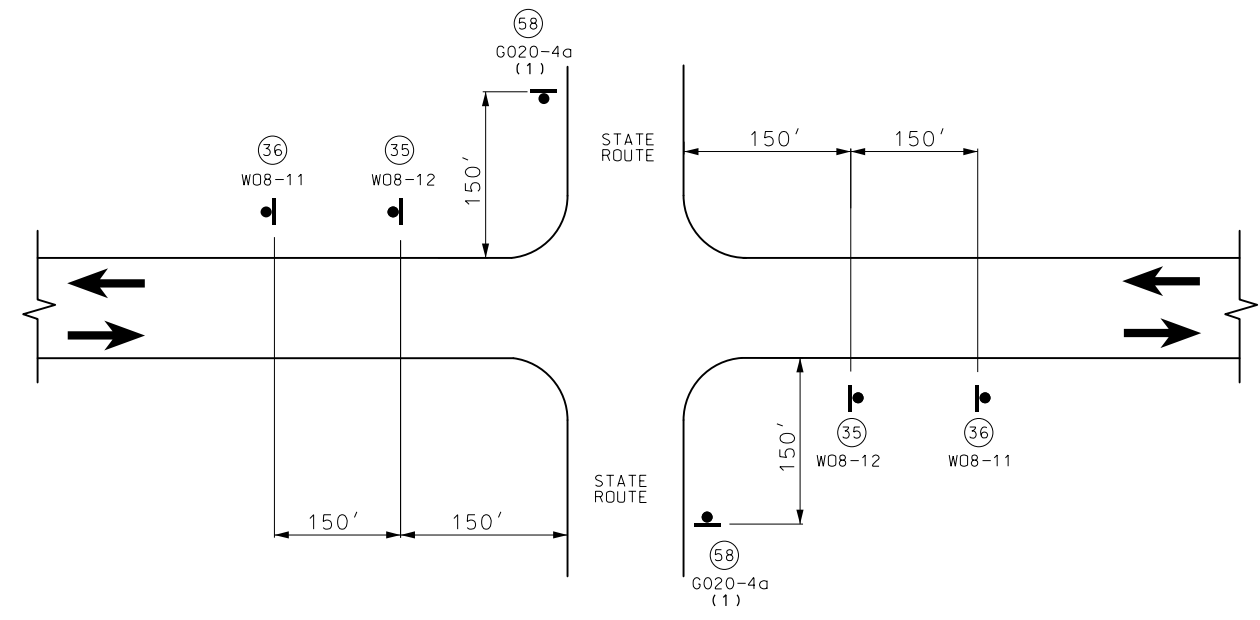
DESCRIPTION

DATE

DESCRIPTION



SIGN SPACING AND TEMPORARY STRIPING FOR MAINLINE



SIGN SPACING AT STATE ROUTE INTERSECTIONS SHOWING TEMPORARY STRIPING FOR MAINLINE

(1) ADDITIONAL SIDEROADS MAY BE SIGNED AS APPROVED BY THE ENGINEER.



NOTES:

SIGN (35) AND TEMPORARY RAISED PAVEMENT MARKING (SEE STANDARD PLAN 620.10) INSTALLED WHERE CENTERLINE STRIPING HAS BEEN COVERED OR REMOVED. SIGNS ARE TO REMAIN IN PLACE UNTIL THE PERMANENT CENTERLINE PAVEMENT MARKINGS ARE IN PLACE. SIGNS SHALL BE COVERED OR REMOVED WHEN PAVEMENT CENTERLINE MARKING HAS BEEN INSTALLED.

SIGN (35) IS PLACED AT APPROXIMATELY TWO-MILE INTERVALS AND AT STATE ROUTE JUNCTIONS. WHEN THE INSTALLATION AT A JUNCTION IS WITHIN ONE-EIGHTH MILE OF THE NORMAL MAINLINE SIGN (35), THE LATTER MAY BE ELIMINATED.

ALL SIGNS SHALL BE POST MOUNTED AND IN ACCORDANCE WITH STANDARD PLAN 616.10 AND 903.03.

NOT TO SCALE

MISSOURI HIGHWAYS AND TRANSPORTATION COMMISSION

105 WEST CAPITOL  
JEFFERSON CITY, MO 65102  
1-888-ASK-MODOT (1-888-275-6636)

IF A SEAL IS PRESENT ON THIS SHEET IT HAS BEEN ELECTRONICALLY SEALED AND DATED.

