

**DESIGN DESIGNATION**

A.D.T. - 2008 = 15,180  
 A.D.T. - 2028 = 22,190  
 D.H.V. = 10%  
 T = 14%  
 V = 50 M.P.H.

FUNCTIONAL CLASSIFICATION = PRIMARY ARTERIAL

**CONTROLLED ACCESS HIGHWAY**

THIS SHALL BE A CONTROLLED ACCESS HIGHWAY, BETWEEN STA. 7+60.00 AND STA. 29+50.00 EXCEPT AT LOCATIONS AND AS OTHERWISE SPECIFICALLY SHOWN ON THESE PLANS. NO ABUTTER'S RIGHTS IN OR OF DIRECT ACCESS TO, FROM, OR ACROSS THE HIGHWAY OR ITS RIGHT-OF-WAY SHALL ATTACH OR BELONG TO ANY PROPERTY ABUTTING ON SAID SECTION OF HIGHWAY, OR TO ANY PERSON MERELY BECAUSE OF OWNERSHIP OF SUCH ABUTTING PROPERTY. THERE SHALL BE THE USUAL RIGHT OF ACCESS OVER ANY LOCATION SHOWN ON THESE PLANS EITHER AS (1) AN ENTRANCE OR (2) A PRIVATE UNDERPASS. WHEREVER AN ADJACENT OUTER ROADWAY OR SERVICE ROAD IS SHOWN, THERE SHALL BE THE USUAL RIGHT OF DIRECT ACCESS BETWEEN THE ABUTTING PROPERTY AND SUCH OUTER ROADWAY OR SERVICE ROAD (EXCEPT WHERE ACCESS IS SPECIFICALLY PROHIBITED BY THE SPECIAL SYMBOL DENOTING NO RIGHT OF ACCESS) AND ALONG IT TO AND FROM THE NEAREST LANE OF THE THROUGHWAY OF A PUBLIC HIGHWAY. OUTER ROADWAYS AND SERVICE ROADS, AS THE CASE MAY BE, ARE SO DESIGNATED ON THE PLANS.

- BEGINNING AND ENDING OF CONTROLLED ACCESS
- +— CONTROLLED ACCESS
- X— NO RIGHT OF ACCESS OR CROSSING OF LINES BEARING THIS SYMBOL WILL BE PERMITTED UNDER ANY CIRCUMSTANCES.

**CONVENTIONAL SYMBOLS**  
(USED IN PLANS)

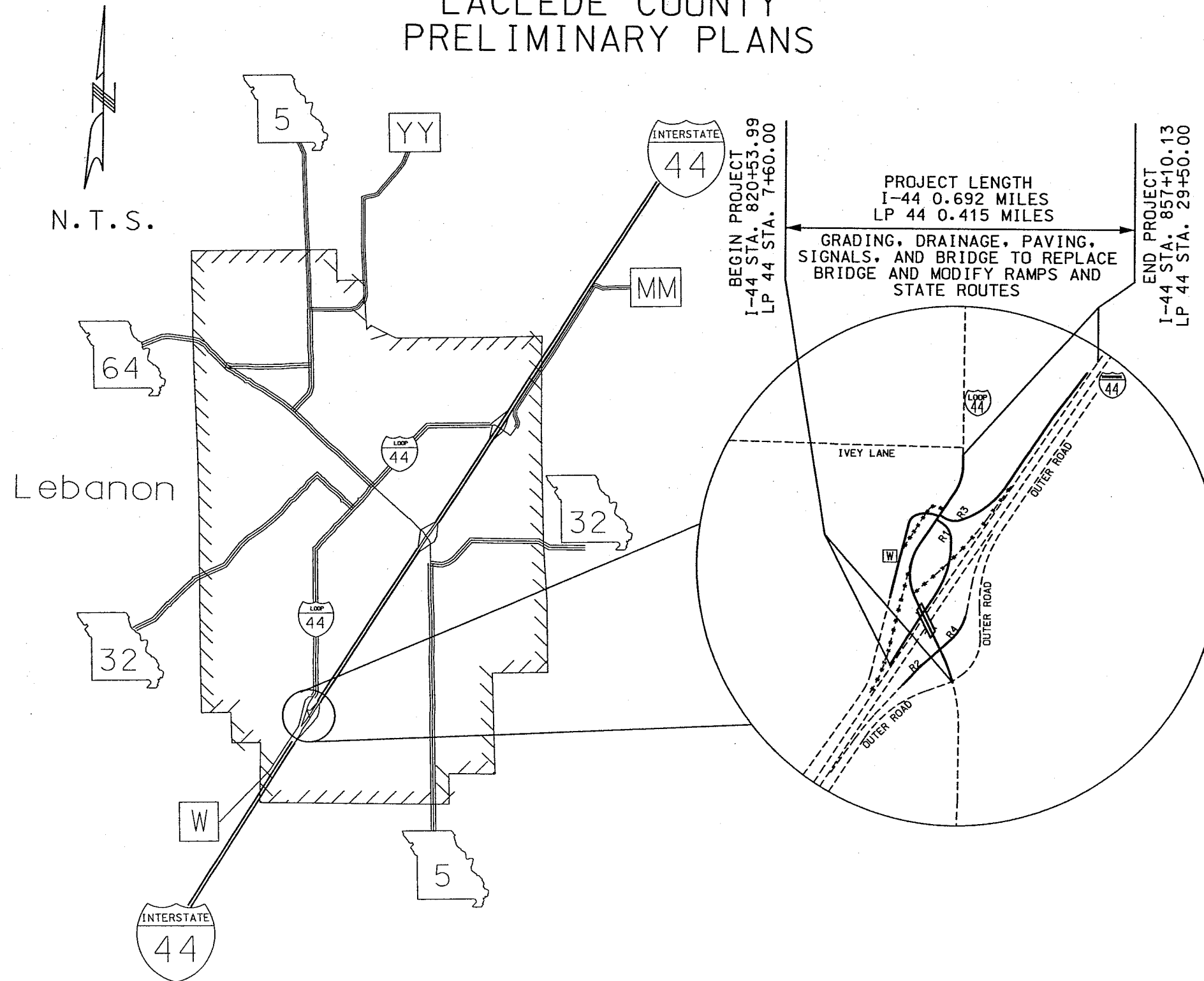
	EXISTING	NEW
BUILDINGS AND STRUCTURES		
GUARD RAIL		
CONCRETE RIGHT-OF-WAY MARKER		
STEEL RIGHT-OF-WAY MARKER		
LOCATION SURVEY MARKER		
UTILITIES		
FIBER OPTICS		
OVERHEAD TELEPHONE		
UNDERGROUND TELEPHONE		
OVERHEAD POWER		
UNDERGROUND POWER		
GAS		
WATER		
MANHOLE		
FIRE HYDRANT		
WATER VALVE		
WATER METER		
DROP INLET		
DITCH BLOCK		
GROUND MOUNTED SIGN		
LIGHT POLE		
H-FRAME POWER POLE		
TELEPHONE PEDESTAL		
FENCE		
CHAIN LINK		
WOVEN WIRE		
GATE POST		
BENCHMARK		

NOTE: DASHED OR OPEN SYMBOLS INDICATE EXISTING FEATURES

# MISSOURI HIGHWAYS AND TRANSPORTATION COMMISSION

## PLANS FOR PROPOSED STATE HIGHWAY

### LACLEDE COUNTY PRELIMINARY PLANS



ROUTE	STATE	DISTRICT
LP 44	MO	8
JOB NO	J8U0576	
CONTRACT ID		
PROJECT NO		
COUNTY	LACLEDE	

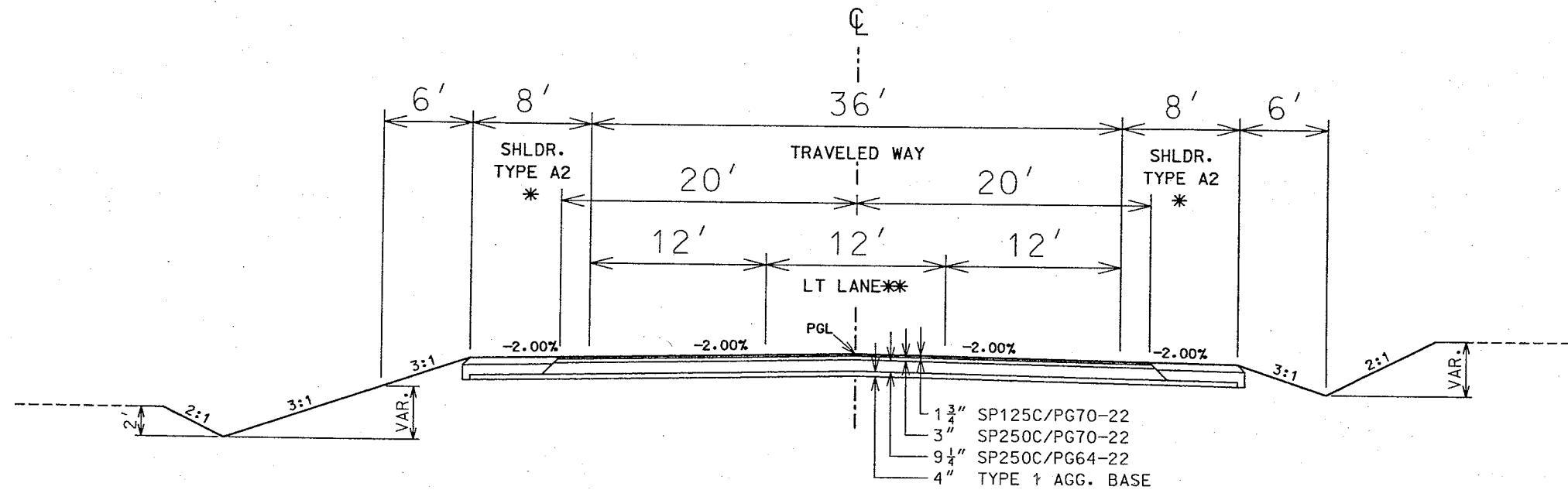
**INDEX OF SHEETS**

DESCRIPTION	SHEET NUMBER
TITLE SHEET	1
TYPICAL SECTIONS (11 SHEETS)	2
SUMMARY (1 SHEET)	3
SUMMARY (1 SHEET)	4
PLAN-PROFILE	3-8
REFERENCE POINTS	5
COORDINATE POINTS	6
SPECIAL SHEETS	9
TRAFFIC CONTROL SHEETS	
EROSION CONTROL	
LIGHTING	
SIGNALS	
SIGNING	
PAVEMENT MARKING	
CULVERT SECTIONS	CS1-CS2
BRIDGE DRAWINGS	
CROSS SECTIONS	XS01-XS27
COMPUTER DATA	

**LENGTH OF PROJECT**

I-44		
BEGINNING OF PROJECT	STA.	820 + 53.99
END OF PROJECT	STA.	857 + 10.13
APPARENT LENGTH		3656.14 FEET
EQUATIONS AND EXCEPTIONS		
TOTAL CORRECTIONS		0.00 FEET
NET LENGTH OF PROJECT		3656.14 FEET
STATE LENGTH		0.692 MILES
LP 44		
BEGINNING OF PROJECT	STA.	7 + 60.00
END OF PROJECT	STA.	29 + 50.00
APPARENT LENGTH		2190.00 FEET
EQUATIONS AND EXCEPTIONS		
TOTAL CORRECTIONS		0.00 FEET
NET LENGTH OF PROJECT		2190.00 FEET
STATE LENGTH		0.415 MILES

ROUTE LP44	STATE MO	DISTRICT 8	SHEET NO. 2
JOB NO. J8U0576			
CONTRACT ID.			
PROJECT NO.			
COUNTY LACLEDE			DATE



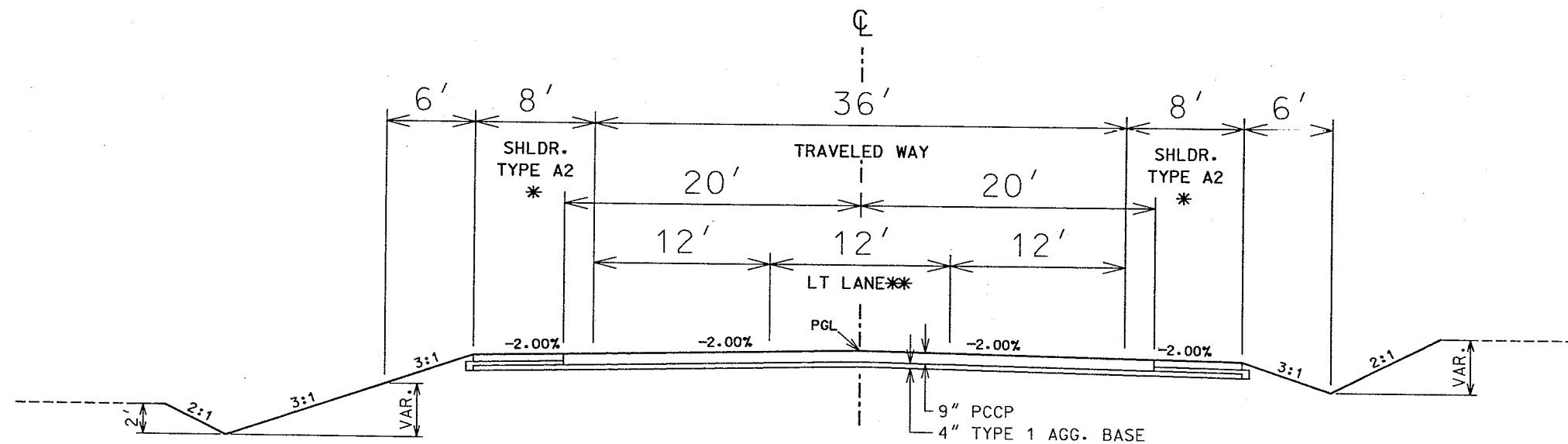
**LP 44**

STA. 7+60.00 TO STA. 12+21.51 (ALT. A)  
 STA. 14+89.49 TO STA. 20+41.62 (ALT. A)  
 STA. 27+50.00 TO STA. 29+50.00 (ALT. A)

PAVEMENT HISTORY  
 8" PCCP  
 4" BASE

**ASPHALT FACTORS**

SP125C	COMBINED FACTOR	2.013
% AC		6.3
SP250C	COMBINED FACTOR	2.035
% AC		5.6
SP250E	COMBINED FACTOR	2.035
% AC		5.6
BIT. PAVE. (PMBP)	COMBINED FACTOR	2.033
% AC		5.4
BIT. BASE (PMBB)	COMBINED FACTOR	2.048
% AC		5.5



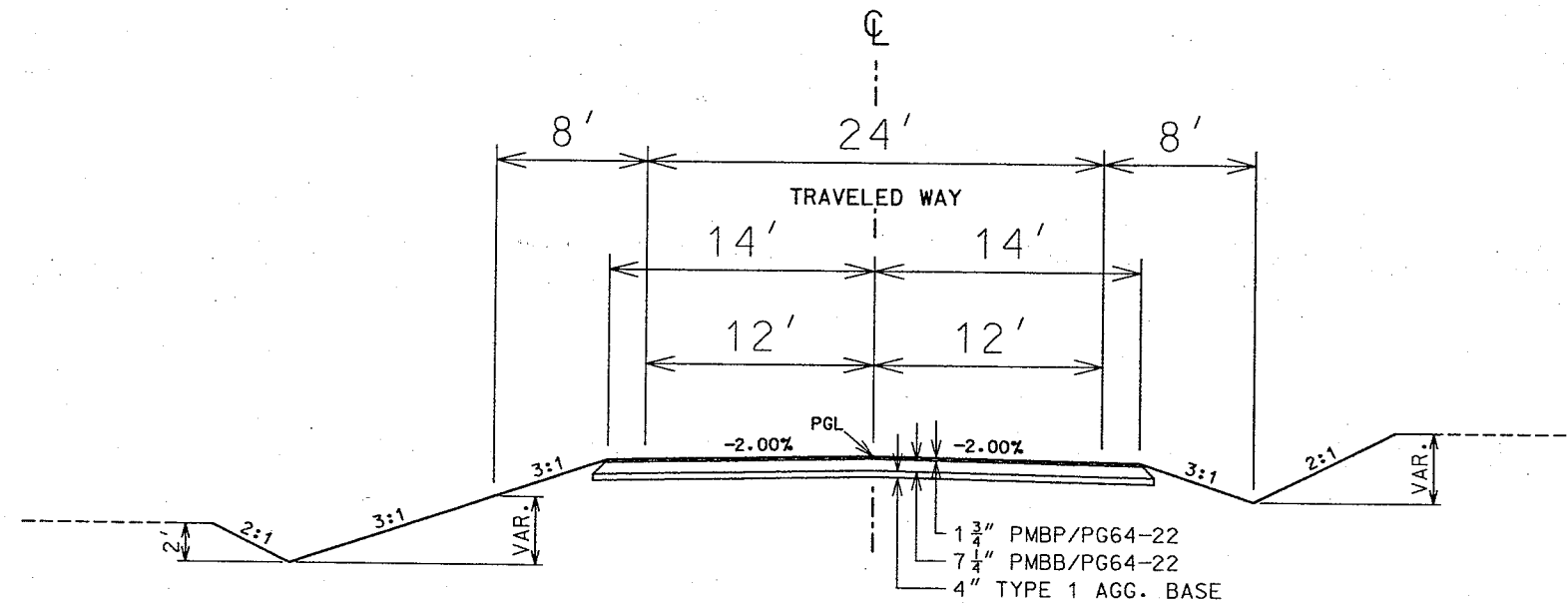
**LP 44**

STA. 7+60.00 TO STA. 12+21.51 (ALT. B)  
 STA. 14+89.49 TO STA. 20+41.62 (ALT. B)  
 STA. 27+50.00 TO STA. 29+50.00 (ALT. B)

\* TRANSITIONS FROM 0' TO 12' FROM  
 STA. 7+60.00 TO STA 10+30.00  
 TRANSITIONS FROM 12' TO 0' FROM  
 STA. 27+50.00 TO STA 30+20.00

\* TYPE A2 SHOULDER SEE SPECIAL SHEET

ROUTE LP44	STATE MO	DISTRICT 8	SHEET NO. 2
JOB NO. J8U0576			
CONTRACT ID.			
PROJECT NO.			
COUNTY LACLEDE	DATE		



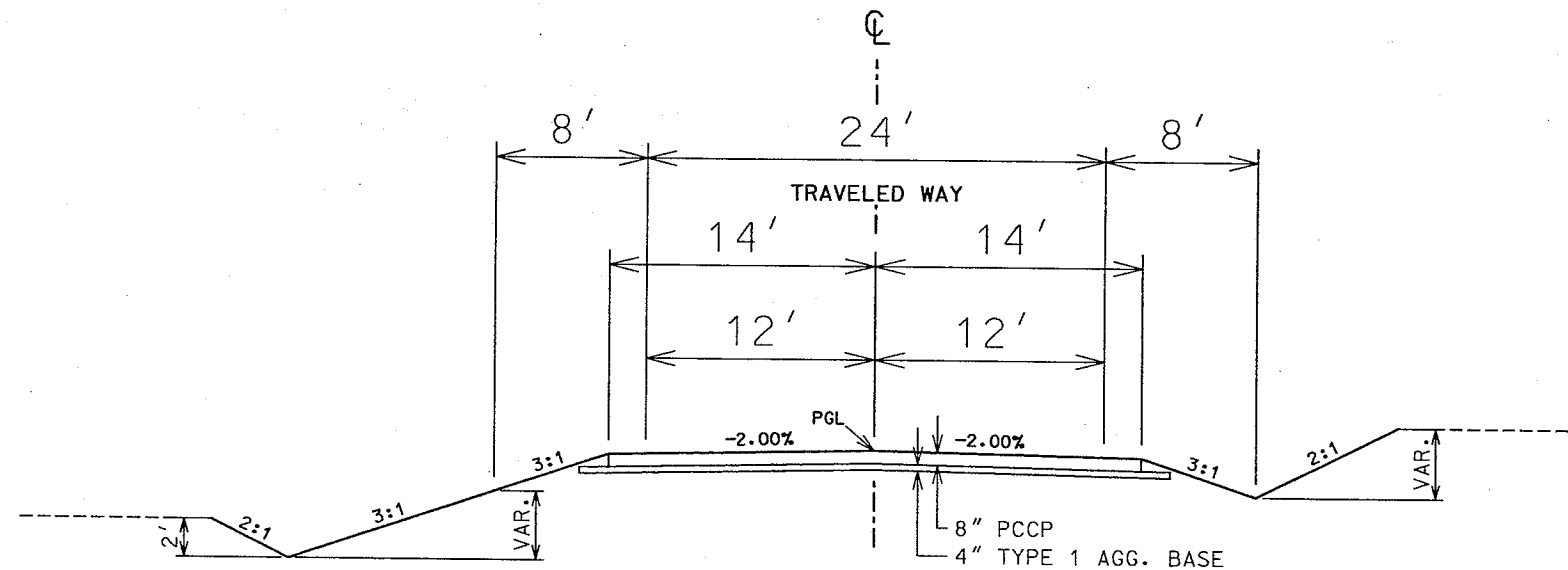
ROUTE W

STA. 825+80.00 TO STA. 832+46.62 (ALT. A)

PAVEMENT HISTORY  
SEAL COAT  
8" BASE

ASPHALT FACTORS

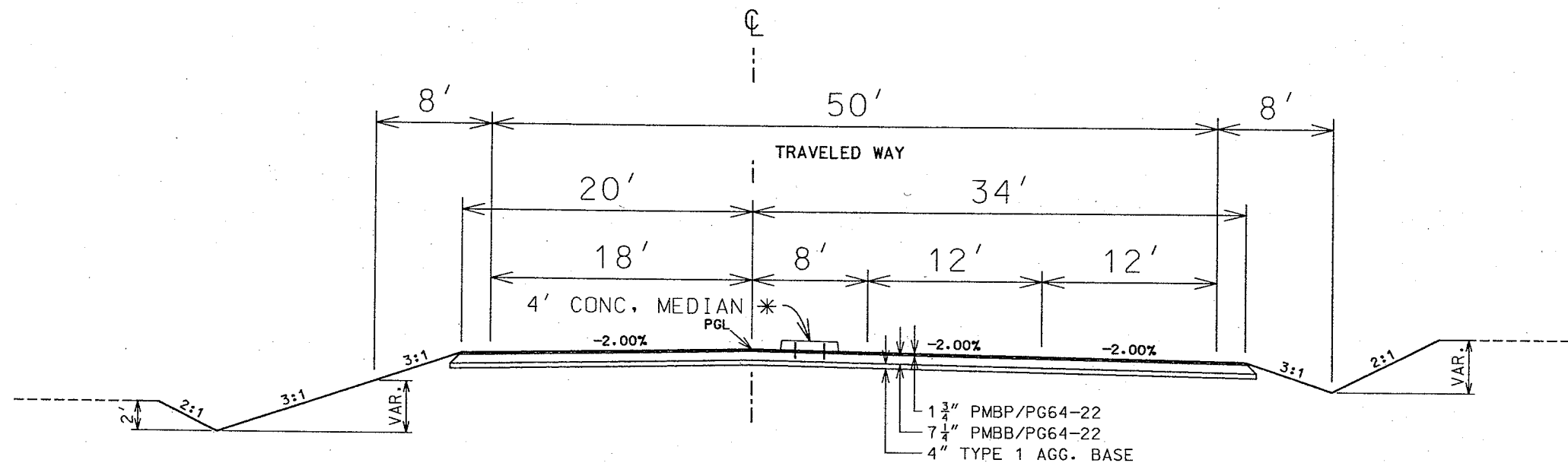
SP125C		
COMBINED FACTOR	2.013	
% AC		6.3
SP250C		
COMBINED FACTOR	2.035	
% AC		5.6
SP250E		
COMBINED FACTOR	2.035	
% AC		5.6
BIT. PAVE. (PMBP)		
COMBINED FACTOR	2.033	
% AC		5.4
BIT. BASE (PMBB)		
COMBINED FACTOR	2.048	
% AC		5.5



ROUTE W

STA. 825+80.00 TO STA. 832+46.62 (ALT. B)

ROUTE	STATE	DISTRICT	SHEET NO.
LP44	MO	8	2
JOB NO.		J8U0576	
CONTRACT ID.			
PROJECT NO.			
COUNTY	LACLEDE	DATE	



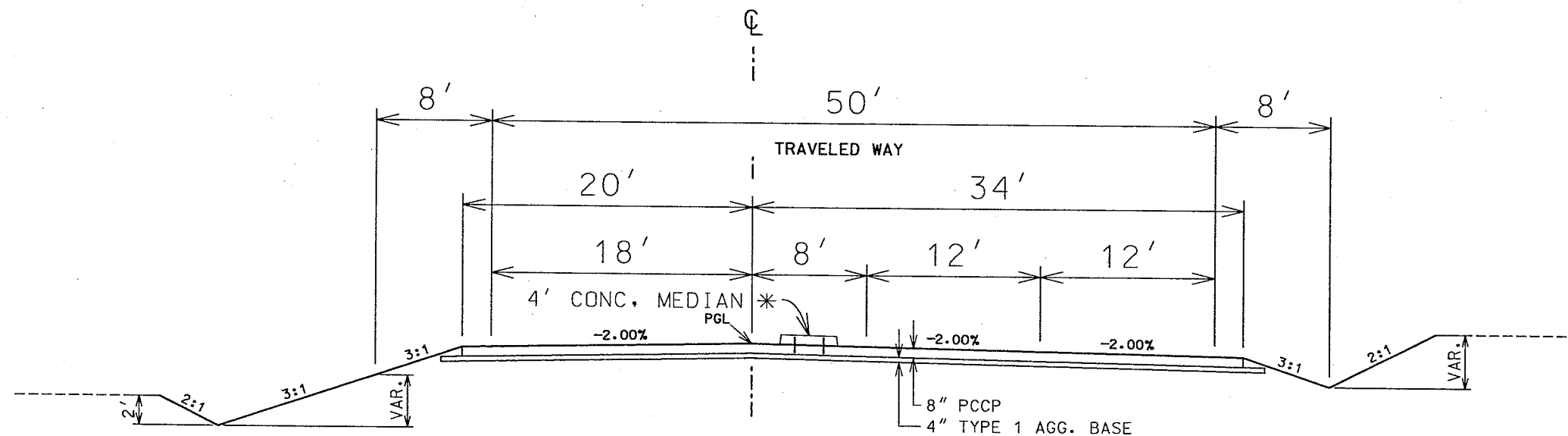
**ROUTE W**

STA. 832+46.62 TO STA. 835+49.42 (ALT. A)

PAVEMENT HISTORY  
SEAL COAT  
8" BASE

**ASPHALT FACTORS**

SP125C		
COMBINED FACTOR	2.013	
% AC	6.3	
SP250C		
COMBINED FACTOR	2.035	
% AC	5.6	
SP250E		
COMBINED FACTOR	2.035	
% AC	5.6	
BIT. PAVE. (PMBP)		
COMBINED FACTOR	2.033	
% AC	5.4	
BIT. BASE (PMBB)		
COMBINED FACTOR	2.048	
% AC	5.5	

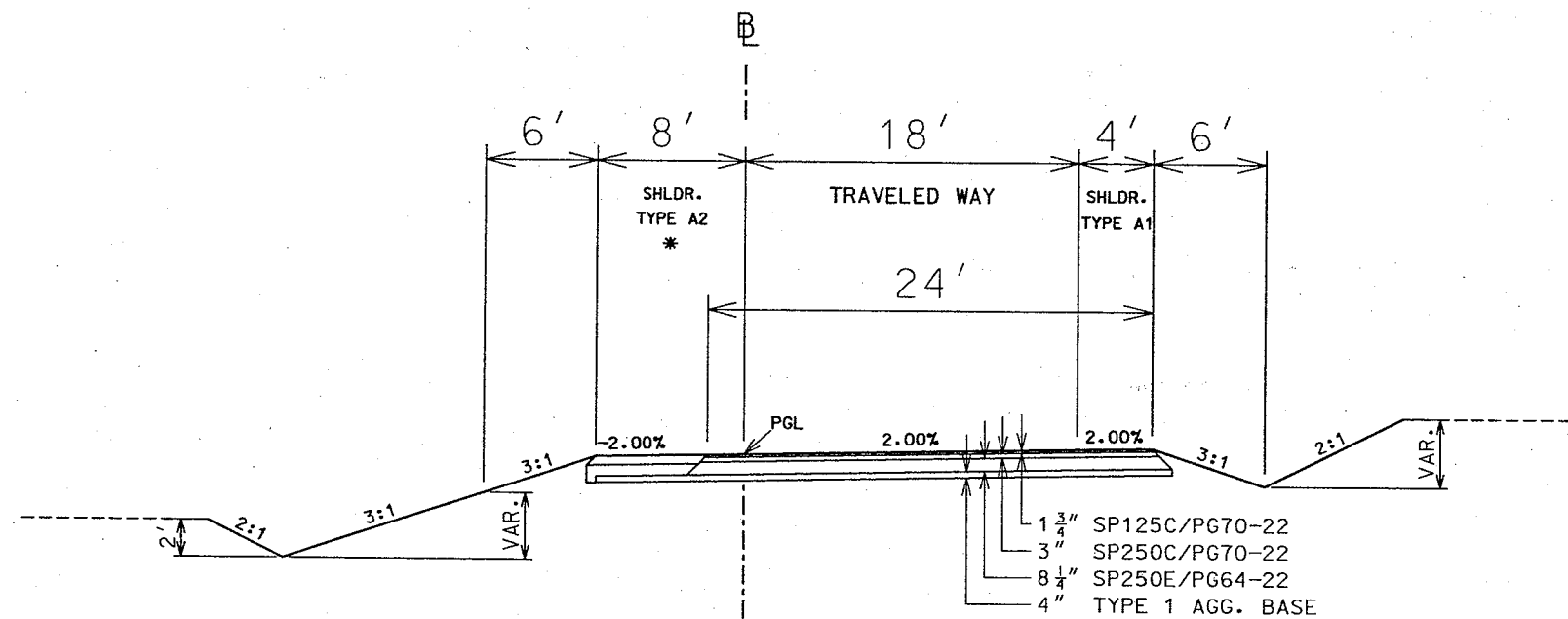


**ROUTE W**

STA. 832+46.62 TO STA. 835+49.42 (ALT. B)

\* 4' CONC. MEDIAN STRIP  
STA. 833+41.59 TO STA. 834+63.95

ROUTE	STATE	DISTRICT	SHEET NO.
LP44	MO	8	2
JOB NO.		J8U0576	
CONTRACT ID.			
PROJECT NO.			
COUNTY	LACLEDE		DATE



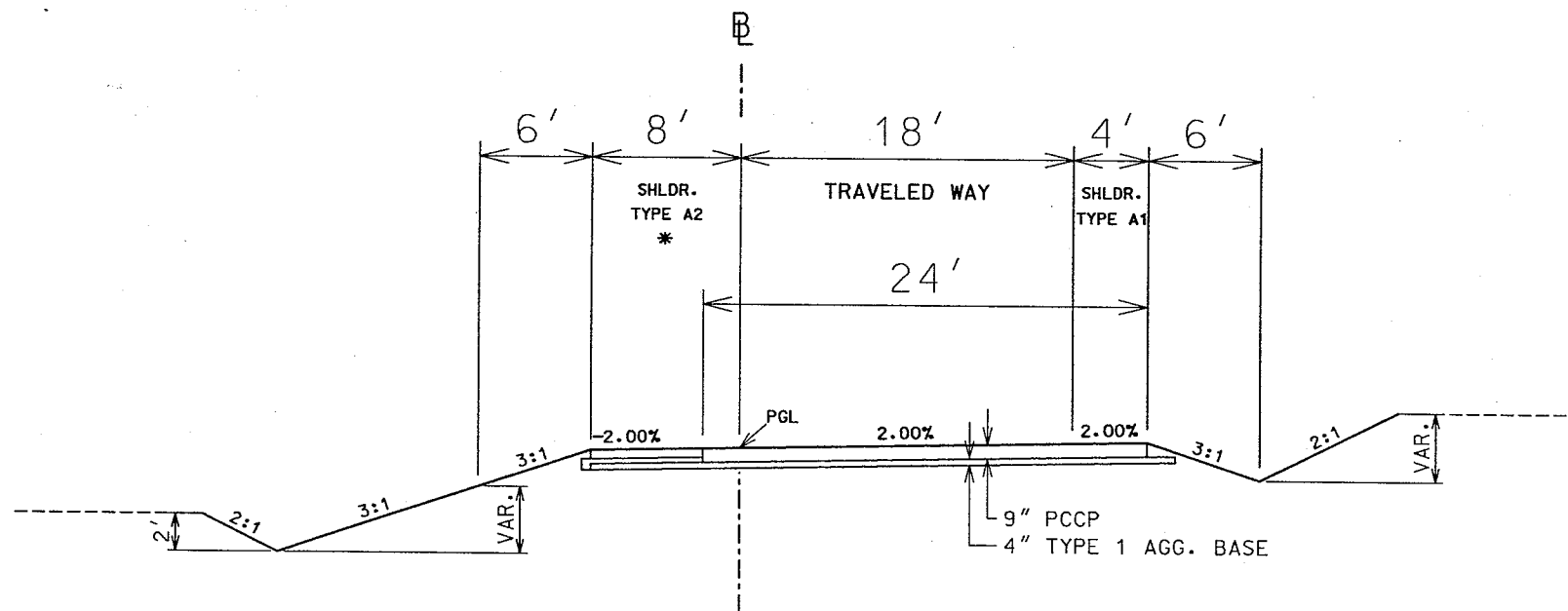
**RAMP 1**

STA. 0+63.66 TO STA. 6+34.73 (ALT. A)

**ASPHALT FACTORS**

SP125C	COMBINED FACTOR	2.013
% AC		6.3
SP250C	COMBINED FACTOR	2.035
% AC		5.6
SP250E	COMBINED FACTOR	2.035
% AC		5.6
BIT. PAVE. (PMBP)	COMBINED FACTOR	2.033
% AC		5.4
BIT. BASE (PMBB)	COMBINED FACTOR	2.048
% AC		5.5

PAVEMENT HISTORY  
8" PCCP  
4" BASE

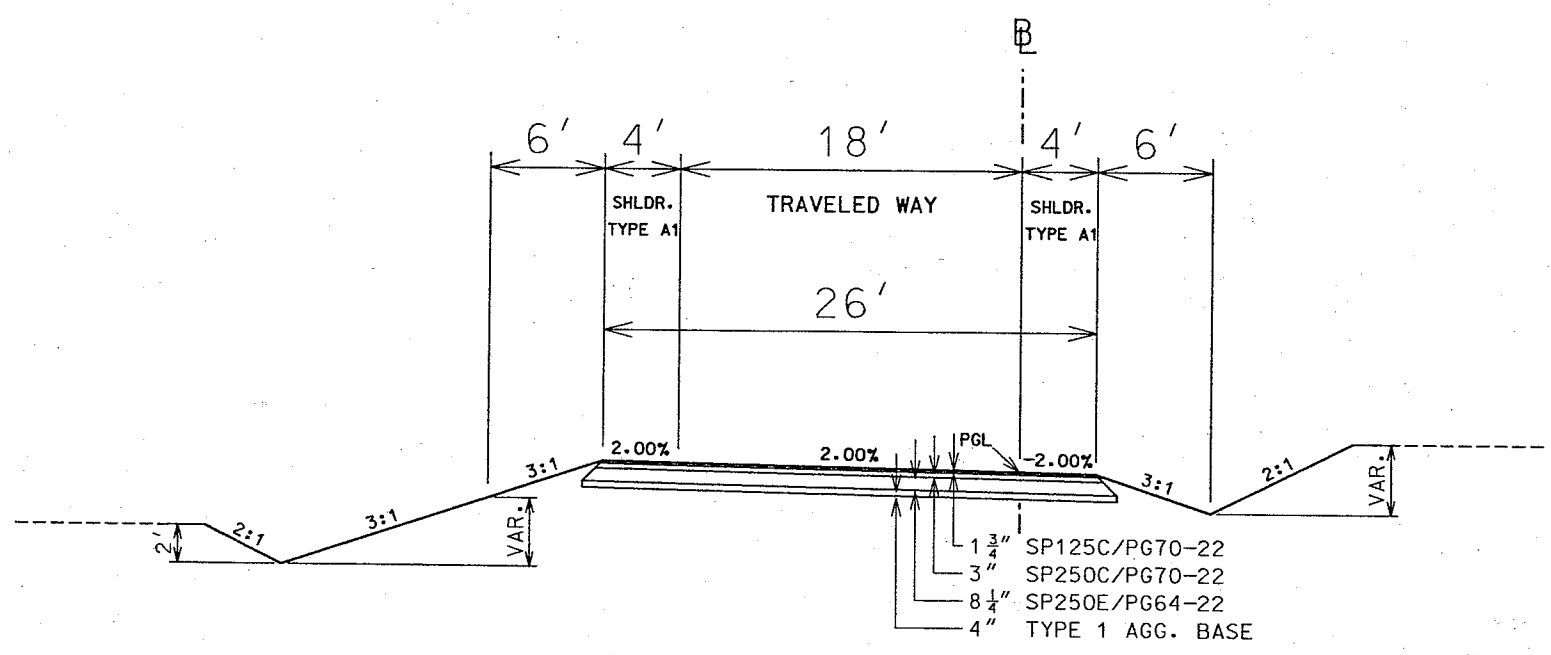


**RAMP 1**

STA. 0+63.66 TO STA. 6+34.73 (ALT. B)

\* TYPE A2 SHOULDER SEE SPECIAL SHEET

ROUTE	STATE	DISTRICT	SHEET NO.
LP44	MO	8	2
JOB NO.		J8U0576	
CONTRACT ID.			
PROJECT NO.			
COUNTY	LACLEDE	DATE	



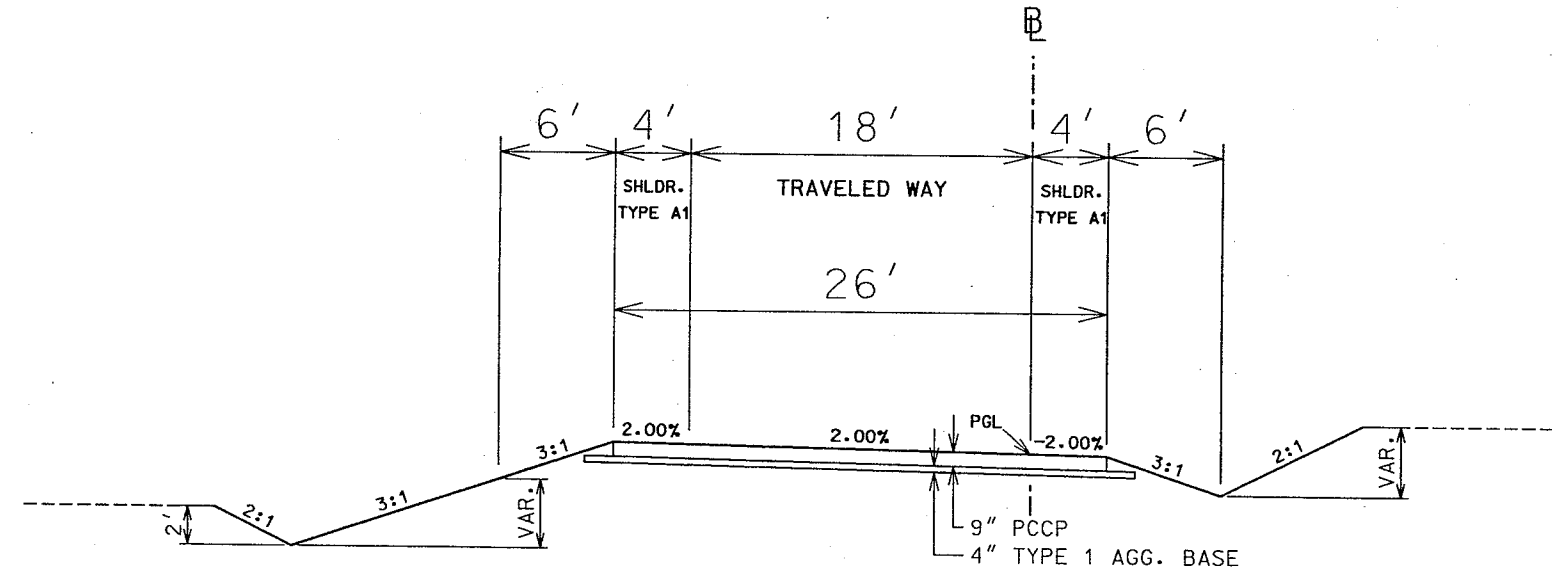
**RAMP 2**

STA. 9+83.00 TO STA. 14+10.53 (ALT. A)

PAVEMENT HISTORY  
 4" AC  
 5" PLANT MIX  
 4" BASE

**ASPHALT FACTORS**

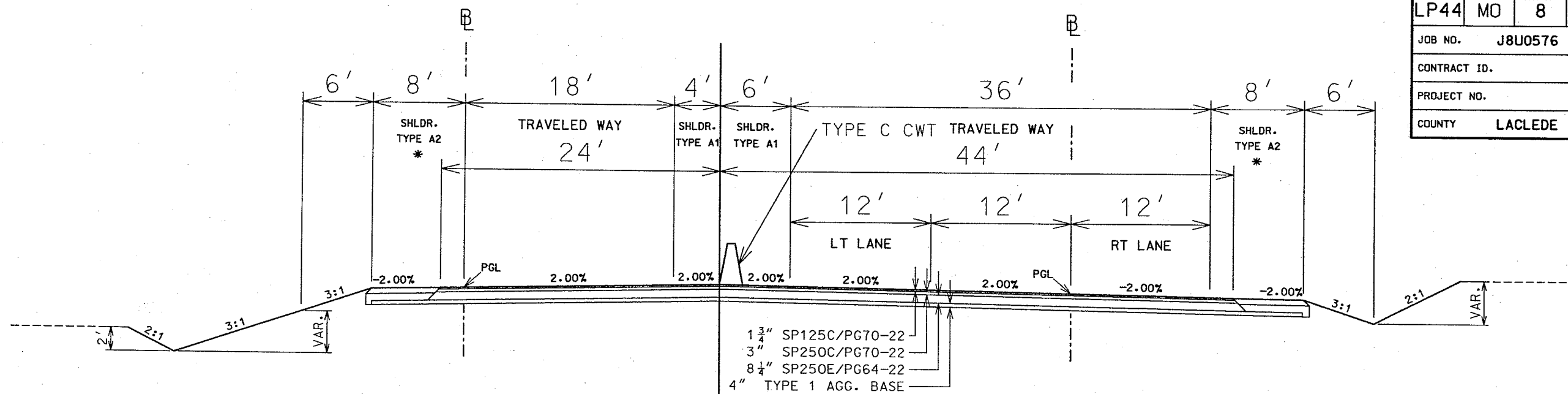
SP125C	COMBINED FACTOR	2.013
% AC		6.3
SP250C	COMBINED FACTOR	2.035
% AC		5.6
SP250E	COMBINED FACTOR	2.035
% AC		5.6
BIT. PAVE. (PMBP)	COMBINED FACTOR	2.033
% AC		5.4
BIT. BASE (PMBB)	COMBINED FACTOR	2.048
% AC		5.5



**RAMP 2**

STA. 9+83.00 TO STA. 14+10.53 (ALT. B)

ROUTE	STATE	DISTRICT	SHEET NO.
LP44	MO	8	2
JOB NO.		J8U0576	
CONTRACT ID.			
PROJECT NO.			
COUNTY	LACLEDE		DATE



RAMP 1

STA. 6+34.70 TO STA. 6+94.73 (ALT. A)

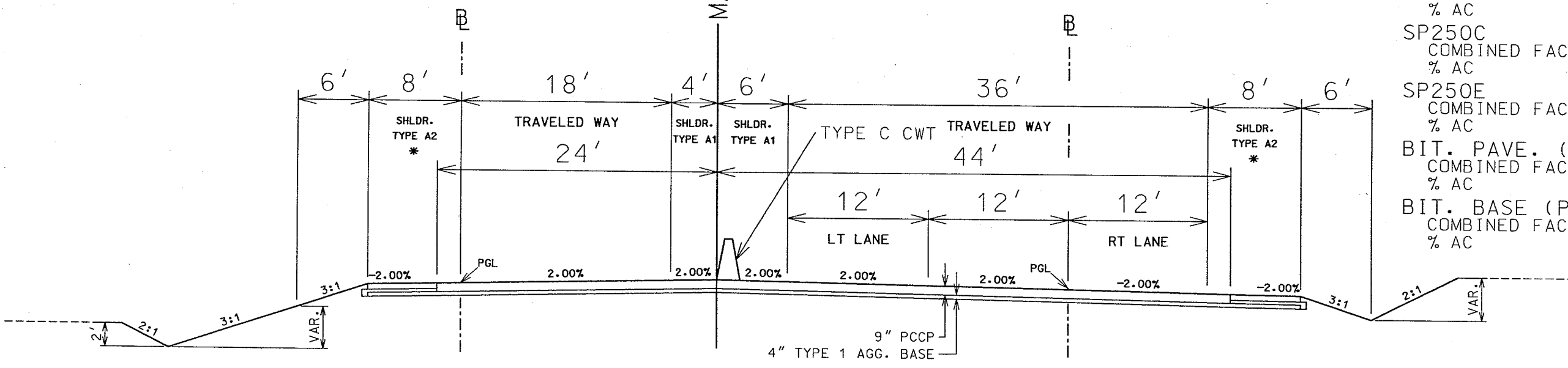
RAMP 3

STA. 0+24.00 TO STA. 0+81.22 (ALT. A)

MATCHLINE

ASPHALT FACTORS

SP125C	COMBINED FACTOR	2.013
% AC		6.3
SP250C	COMBINED FACTOR	2.035
% AC		5.6
SP250E	COMBINED FACTOR	2.035
% AC		5.6
BIT. PAVE. (PMBP)	COMBINED FACTOR	2.033
% AC		5.4
BIT. BASE (PMBB)	COMBINED FACTOR	2.048
% AC		5.5



RAMP 1

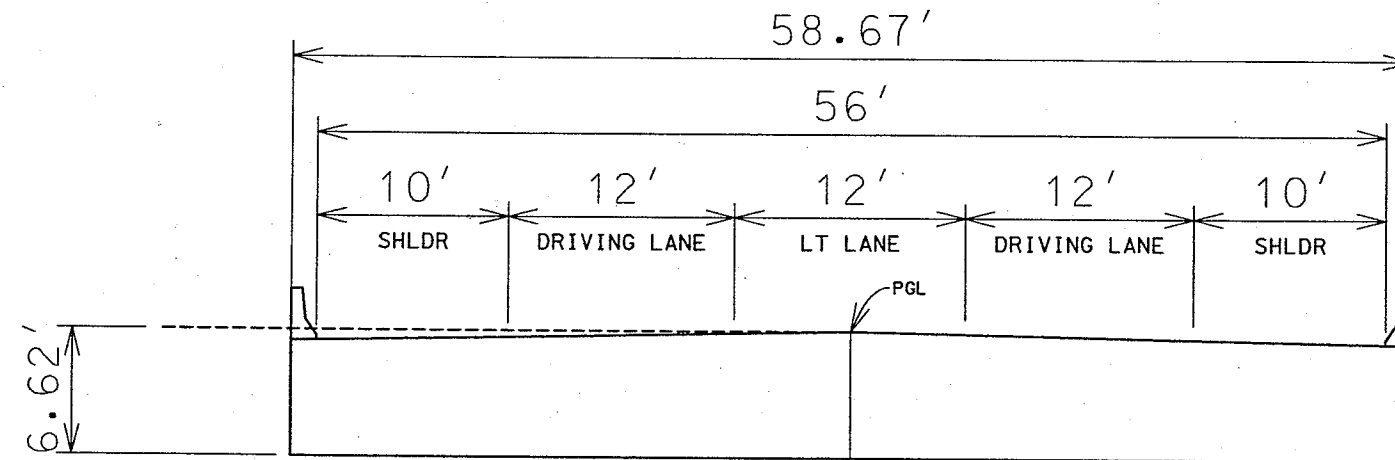
STA. 6+34.70 TO STA. 6+94.73 (ALT. B)

RAMP 3

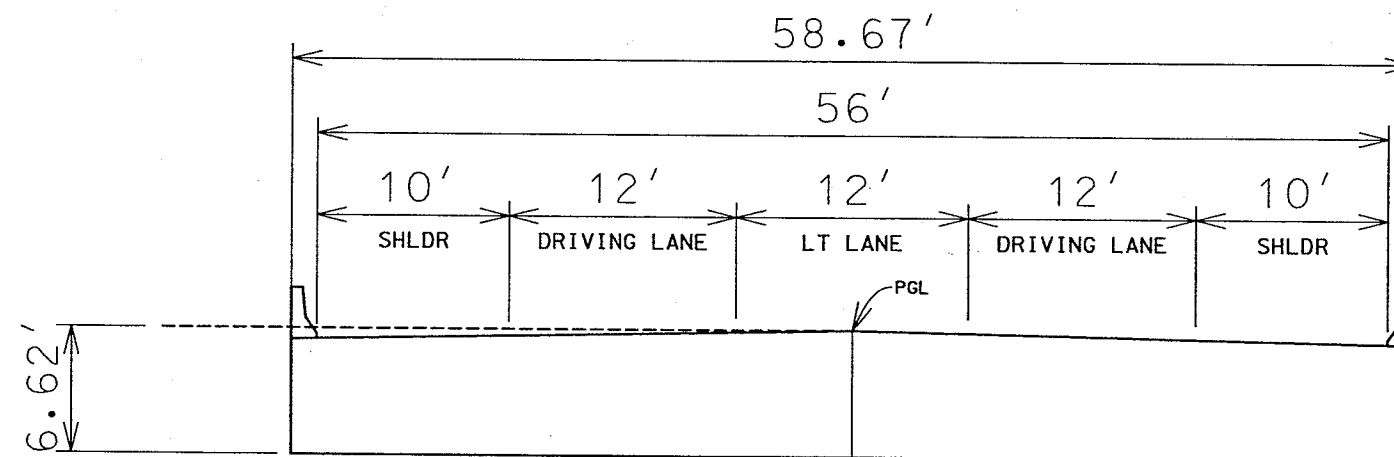
STA. 0+24.00 TO STA. 0+81.22 (ALT. B)

\* TYPE A2 SHOULDER SEE SPECIAL SHEET

ROUTE	STATE	DISTRICT	SHEET NO.
LP44	MO	8	2
JOB NO. J8U0576			
CONTRACT ID.			
PROJECT NO.			
COUNTY	LACLEDE		DATE



LP 44  
 BRIDGE TYPICAL  
 STA. 12+21.51 TO STA. 14+89.49 (ALT. A)

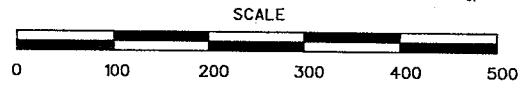
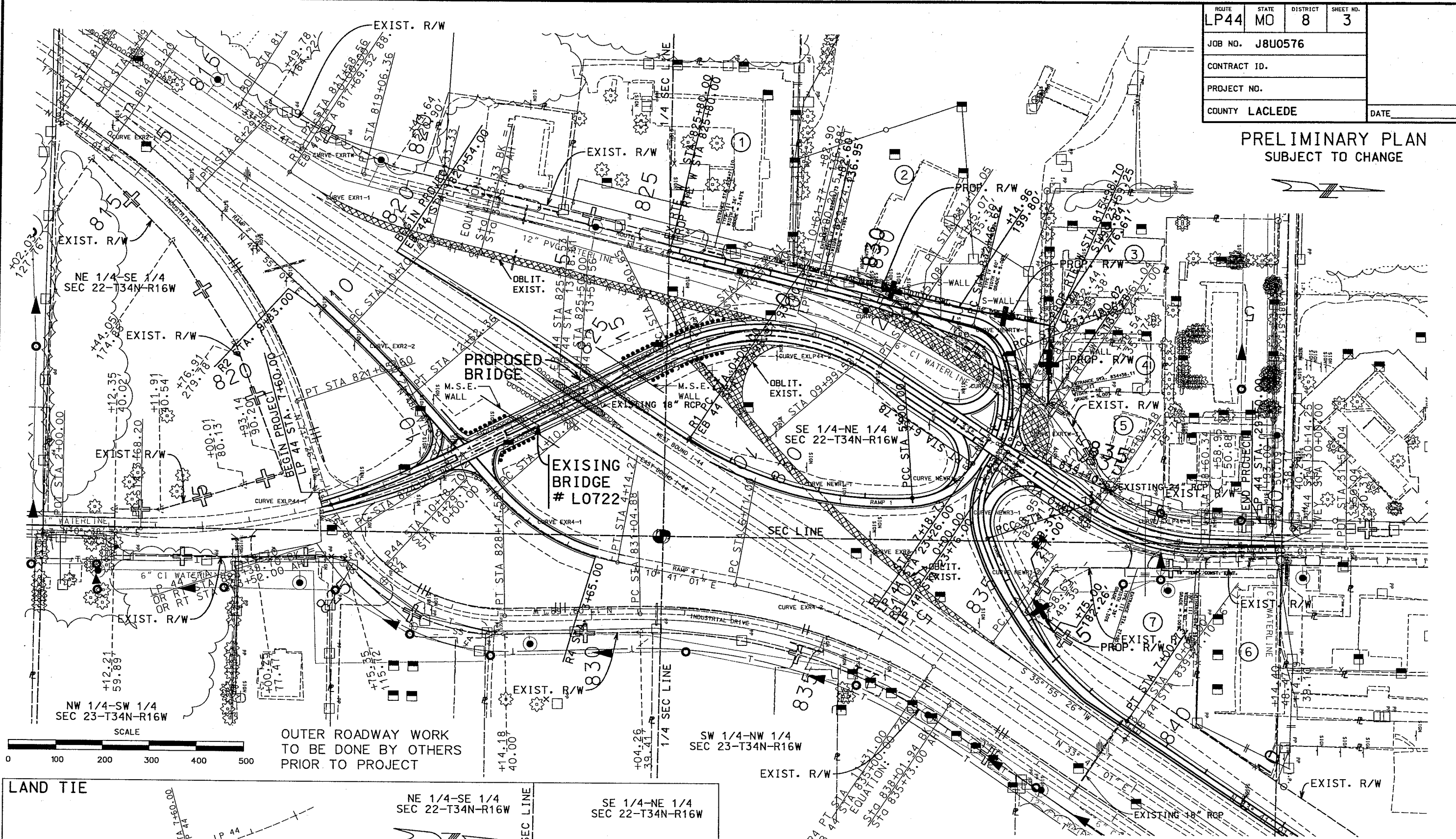


LP 44  
 BRIDGE TYPICAL  
 STA. 12+21.51 TO STA. 14+89.49 (ALT. B)

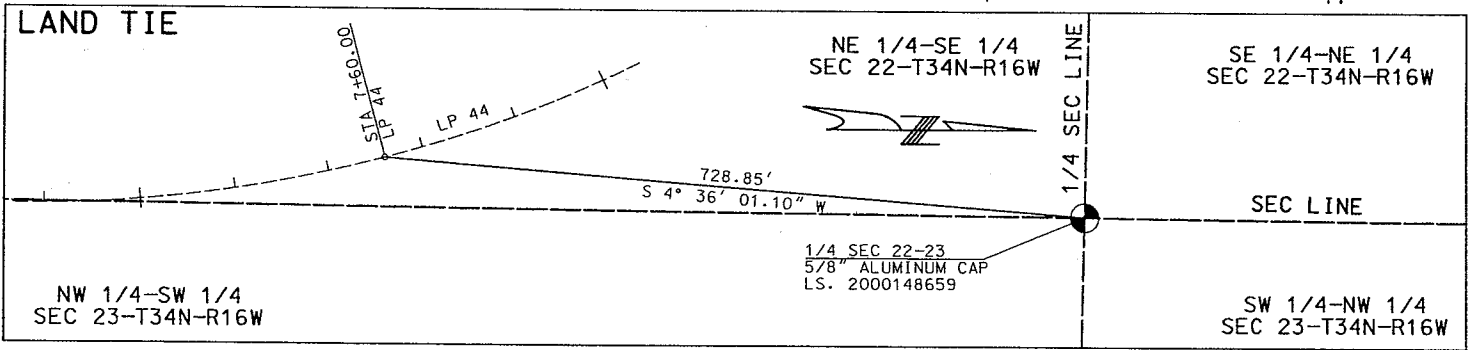


ROUTE	STATE	DISTRICT	SHEET NO.
LP44	MO	8	3
JOB NO. J8U0576			
CONTRACT ID.			
PROJECT NO.			
COUNTY LACLEDE			DATE

PRELIMINARY PLAN  
SUBJECT TO CHANGE



OUTER ROADWAY WORK  
TO BE DONE BY OTHERS  
PRIOR TO PROJECT



ALL BEARINGS SHOWN ARE MODIFIED STATE  
PLANE BEARINGS, CENTRAL ZONE.

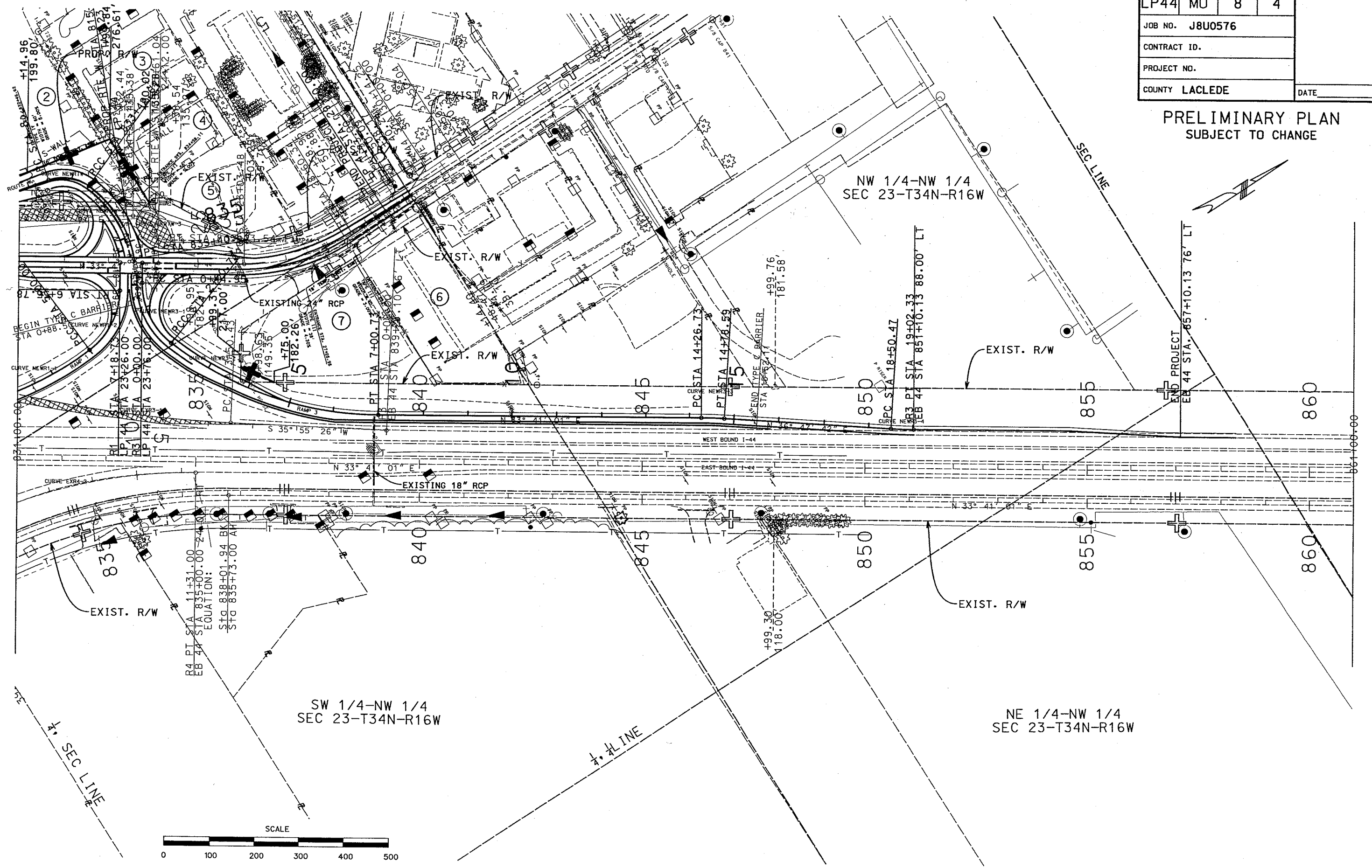
ANY WORK INDICATED ON THE PLANS THAT EXTENDS  
BEYOND THE PROJECT LIMITS IS CONSIDERED INCIDENTAL  
TO AND A PART OF THE CONSTRUCTION OF THIS PROJECT.

CONTRACTOR IS RESPONSIBLE FOR LOCATING ALL UNDERGROUND  
UTILITIES. UTILITIES PLOTTED ARE APPROXIMATE ONLY. IT IS  
POSSIBLE THERE MAY BE OTHERS WHICH ARE NOT SHOWN ON PLANS.

- BENCH MARKS - U.S.G.S. DATUM
- BM# EXISTING CHISELED SQUARE ON S. CURB  
ENTRANCE TO HEARTLAND ANTIQUE MALL  
LP 44 STATION 8+36.90, 189.49' RIGHT ELEV. 1295.73
  - BM# EXISTING CHISELED SQUARE ON N. CURB  
S. ENTRANCE OF LEBANON CYCLE CENTER  
1-44 STATION 832+75.89, 136.26' RIGHT ELEV. 1293.18
  - BM# CHISELED SQUARE ON S. CURB  
AT IVEY LANE AND LP 44  
LP 44 STATION 29+95.37, 46.50' LEFT ELEV. 1291.28

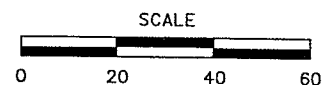
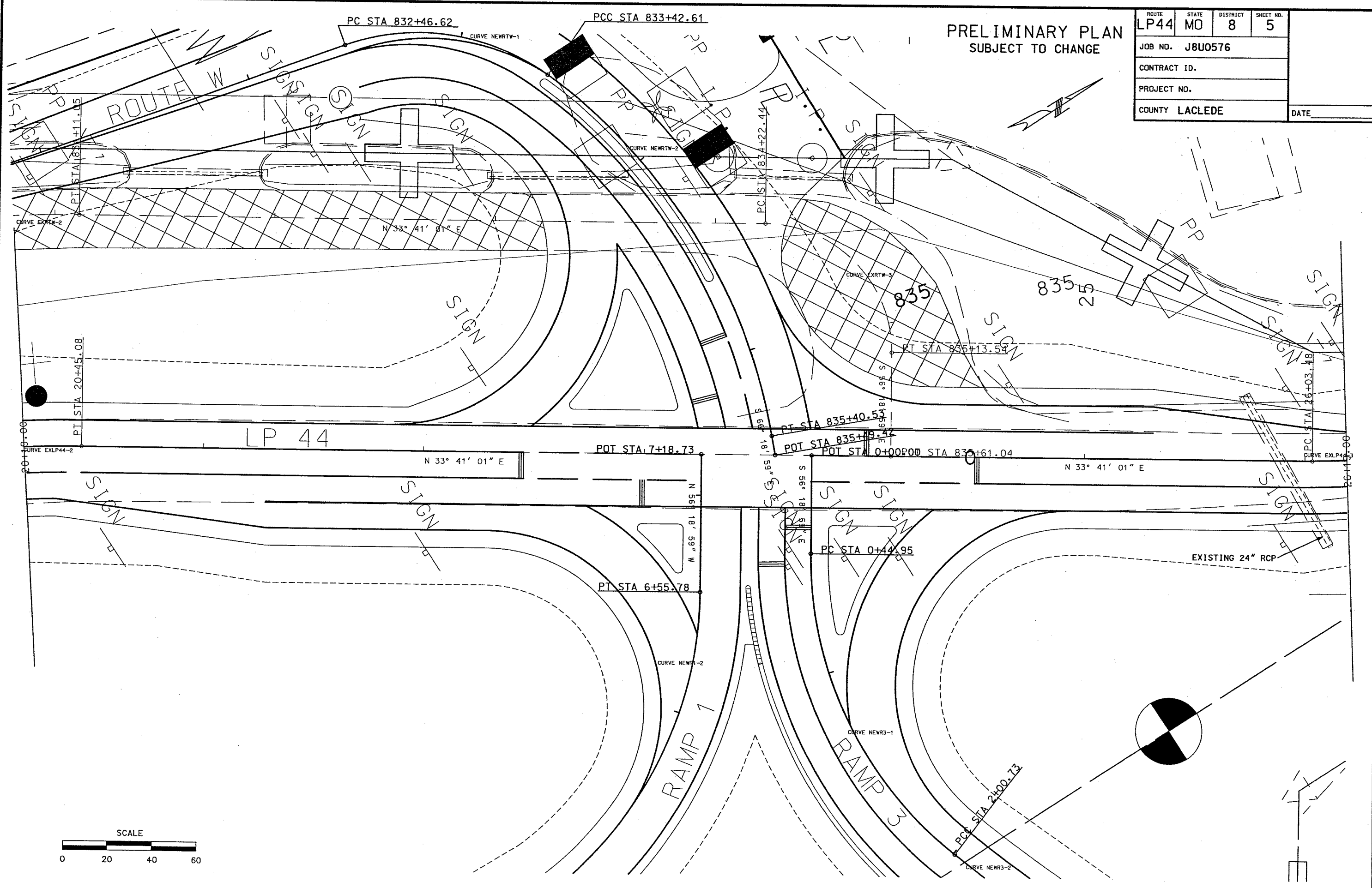
ROUTE	STATE	DISTRICT	SHEET NO.
LP44	MO	8	4
JOB NO. J8U0576			
CONTRACT ID.			
PROJECT NO.			
COUNTY LACLEDE			DATE

PRELIMINARY PLAN  
SUBJECT TO CHANGE



PRELIMINARY PLAN  
SUBJECT TO CHANGE

ROUTE	STATE	DISTRICT	SHEET NO.
LP44	MO	8	5
JOB NO. J8U0576			
CONTRACT ID.			
PROJECT NO.			
COUNTY LACLEDE			DATE



ROUTE	STATE	DISTRICT	SHEET NO.
LP44	MO	8	6
JOB NO. J8U0576			
CONTRACT ID.			
PROJECT NO.			
COUNTY LACLEDE			DATE

LP 44		
EXLP44-1	EXLP44-2	EXLP44-3
PI 7+11.45	PI 18+36.70	PI 27+35.62
PC 3+68.20	PC 15+80.65	PC 26+03.48
PT 10+42.00	PT 20+45.08	PT 28+60.34
Δ 26° 57' 00.0" (LT)	Δ 60° 00' 00.0" (RT)	Δ 33° 11' 00.0" (LT)
D 3° 59' 58.9"	D 12° 55' 08.4"	D 12° 55' 08.4"
L 673.80'	L 464.43'	L 256.86'
T 343.25'	T 255.05'	T 132.14'
R 1,432.50'	R 443.50'	R 443.50'
E 3.70%	E 4.00%	E 4.00%

RAMP 1	
EXR1-1	
PI 1+68.38	
PC 0+00.00	
PT 3+33.33	
Δ 20° 00' 00.0" (LT)	
D 6° 00' 00.0" (LT)	
L 333.33'	
T 166.38'	
R 954.93'	

RAMP 2	
EXR2-1	EXR2-2
PI 4+90.08	PI 11+66.33
PC 3+49.99	PC 10+70.14
PT 6+29.82	PT 12+62.36
Δ 6° 59' 44.6" (RT)	Δ 5° 46' 00.0" (RT)
D 3° 30' 00.0" (LT)	D 3° 00' 00.0" (LT)
L 279.83'	L 192.22'
T 140.09'	T 96.19'
R 2,291.83'	R 1,909.86'
	E 3.20%

RAMP 3	
EXR3-1	
PI 6+76.40	
PC 6+50.43	
PT 9+99.58	
Δ 12° 58' 59.3" (RT)	
D 6° 49' 16.1"	
L 325.97'	
T 2,864.79'	

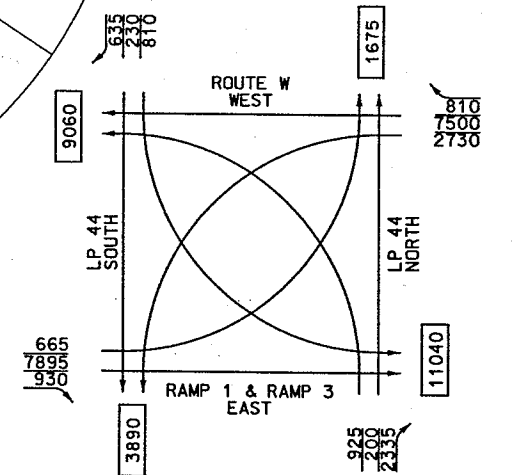
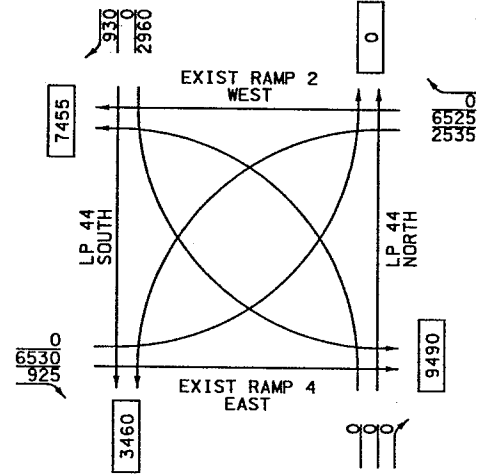
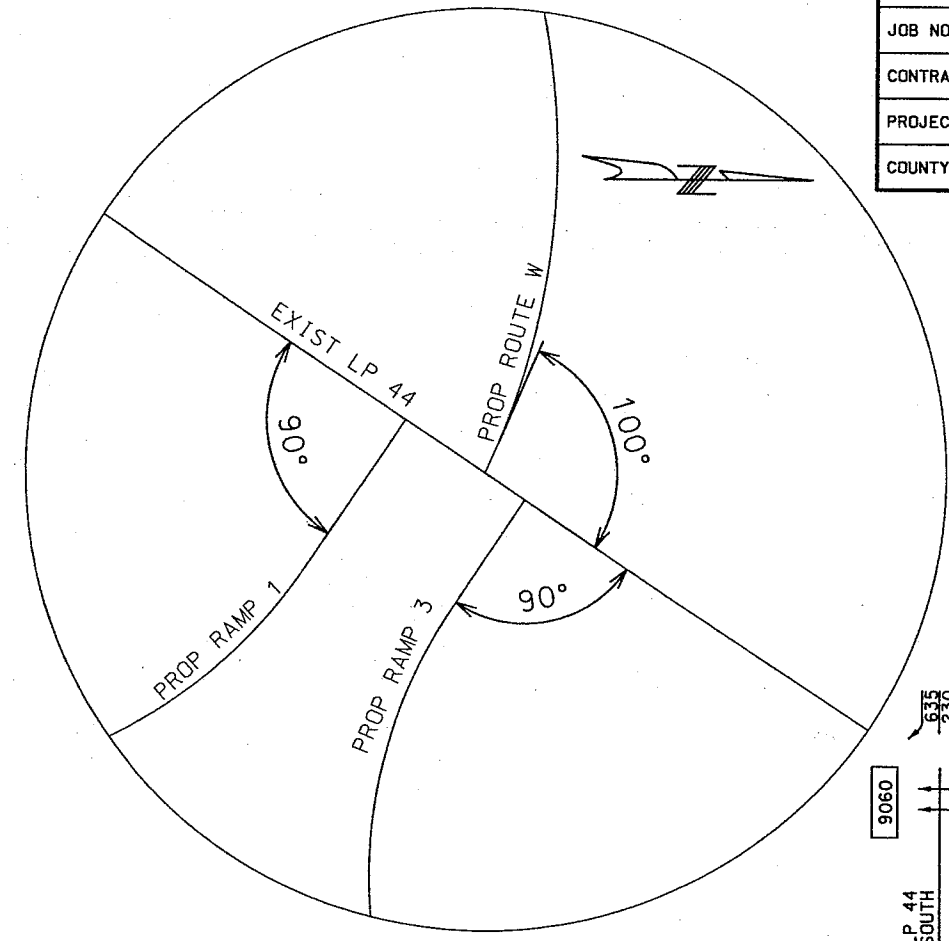
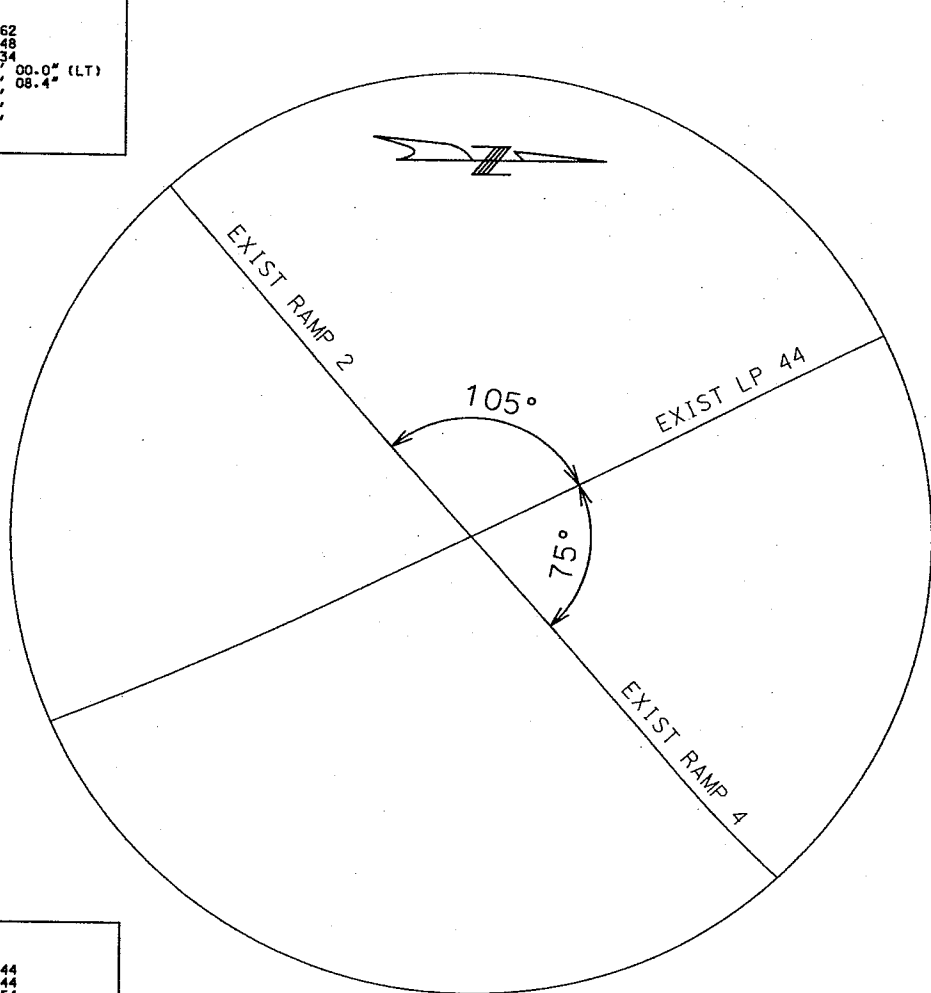
RAMP 4	
EXR4-1	EXR4-2
PI 2+68.10	PI 9+04.14
PC 1+10.27	PC 6+71.00
PT 4+14.27	PT 11+31.00
Δ 38° 00' 00.0" (LT)	Δ 23° 00' 00.0" (RT)
D 12° 30' 00.0" (LT)	D 5° 00' 00.0" (LT)
L 304.00'	L 460.00'
T 157.83'	T 233.14'
R 458.37'	R 1,145.92'
E 4.00%	

RTE W		
EXRTW-1	EXRTW-2	EXRTW-3
PI 818+33.20	PI 830+18.64	PI 834+80.44
PC 817+58.56	PC 829+24.31	PC 834+22.44
PT 819+06.36	PT 831+11.05	PT 835+13.54
Δ 19° 41' 37.2" (LT)	Δ 19° 59' 57.2" (RT)	Δ 30° 00' 00.0" (RT)
D 13° 19' 28.6"	D 10° 42' 34.2"	D 98° 47' 09.0" (RT)
L 147.80'	L 186.74'	L 91.11'
T 74.84'	T 94.33'	T 58.00'
R 430.00'	R 535.00'	R 58.00'

PROP RTE W	
NEWRTW-1	NEWRTW-2
PI 832+98.68	PI 834+47.00
PC 832+46.62	PCC 833+42.61
PCC 833+42.61	PT 835+40.53
Δ 54° 59' 57.3" (RT)	Δ 45° 00' 00.0" (RT)
D 57° 17' 44.8"	D 22° 44' 11.1"
L 95.99'	L 197.92'
T 52.06'	T 104.38'
R 100.00'	R 252.00'
E 4.00%	E 4.00%

PROP RAMP 1	
NEWR1-1	NEWR1-2
PI 2+59.32	PI 5+83.84
PC 0+00.00	PCC 5+00.00
PCC 5+00.00	PT 6+55.78
Δ 7° 29' 50.1" (LT)	Δ 52° 30' 09.9" (LT)
D 37° 29' 58.0"	D 35° 30' 12.2"
L 500.00'	L 155.78'
T 259.32'	T 83.84'
R 764.00'	R 170.00'
E 4.00%	E 4.00%

PROP RAMP 3			
NEWR3-1	NEWR3-2	NEWR3-3	NEWR3-4
PI 1+28.79	PI 4+60.05	PI 14+52.67	PI 18+76.41
PC 0+44.95	PCC 2+00.73	PC 14+26.73	PCC 18+50.47
PCC 2+00.73	PT 7+00.73	PCC 14+78.59	PT 19+02.33
Δ 52° 30' 10.0" (LT)	Δ 37° 29' 50.1" (LT)	Δ 3° 06' 40.8" (RT)	Δ 3° 06' 40.8" (LT)
D 33° 42' 12.2"	D 7° 29' 58.0"	D 6° 00' 00.0"	D 6° 00' 00.0"
L 155.78'	L 500.00'	L 51.86'	L 51.86'
T 83.84'	T 259.32'	T 25.93'	T 25.93'
R 170.00'	R 764.00'	R 954.93'	R 954.93'
E 4.00%	E 4.00%	E 4.00%	E 4.00%



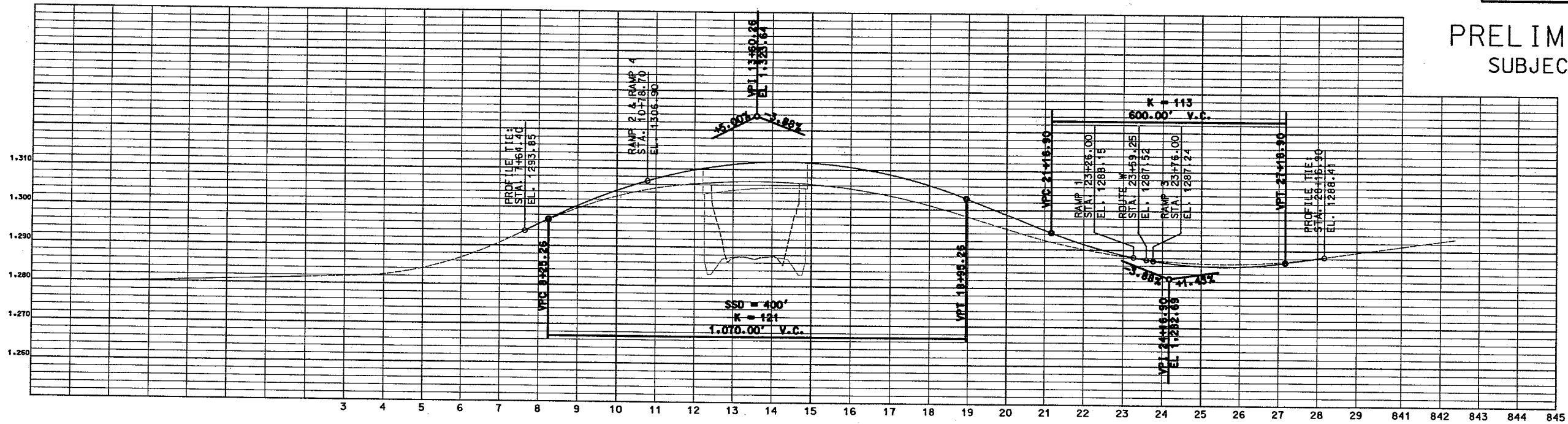
TRAFFIC FLOW DIAGRAM  
ESTIMATED - 2028  
TRAFFIC VOLUME  
PEAK HOUR - 10%  
TRUCKS - 14%

<p>① Koller Enterprises, Inc. (formerly Koller-Craft Plastic Products, Incorporated)</p> <p>0.00 NEW R/W 0.00 PERM. ESM'T 0.06 TEMP. ESM'T. XXX.XX REMAINING</p>	<p>② B &amp; D Oil Company</p> <p>0.68 NEW R/W 0.06 PERM. ESM'T 0.06 TEMP. ESM'T. XXX.XX REMAINING</p>	<p>③ Roshni, Inc.</p> <p>0.01 NEW R/W 0.00 PERM. ESM'T 0.01 TEMP. ESM'T. XXX.XX REMAINING</p>	<p>④ Roshni, Inc.</p> <p>0.02 NEW R/W 0.00 PERM. ESM'T 0.02 TEMP. ESM'T. XXX.XX REMAINING</p>
<p>⑤ Alm Properties 8, L.L.C.</p> <p>0.02 NEW R/W 0.00 PERM. ESM'T 0.04 TEMP. ESM'T. XXX.XX REMAINING</p>	<p>⑥ Shepherd Hills Gift Shop, Inc</p> <p>0.00 NEW R/W 0.00 PERM. ESM'T 0.07 TEMP. ESM'T. XXX.XX REMAINING</p>	<p>⑦ Waffle House, Inc.</p> <p>0.03 NEW R/W 0.00 PERM. ESM'T 0.07 TEMP. ESM'T. XXX.XX REMAINING</p>	

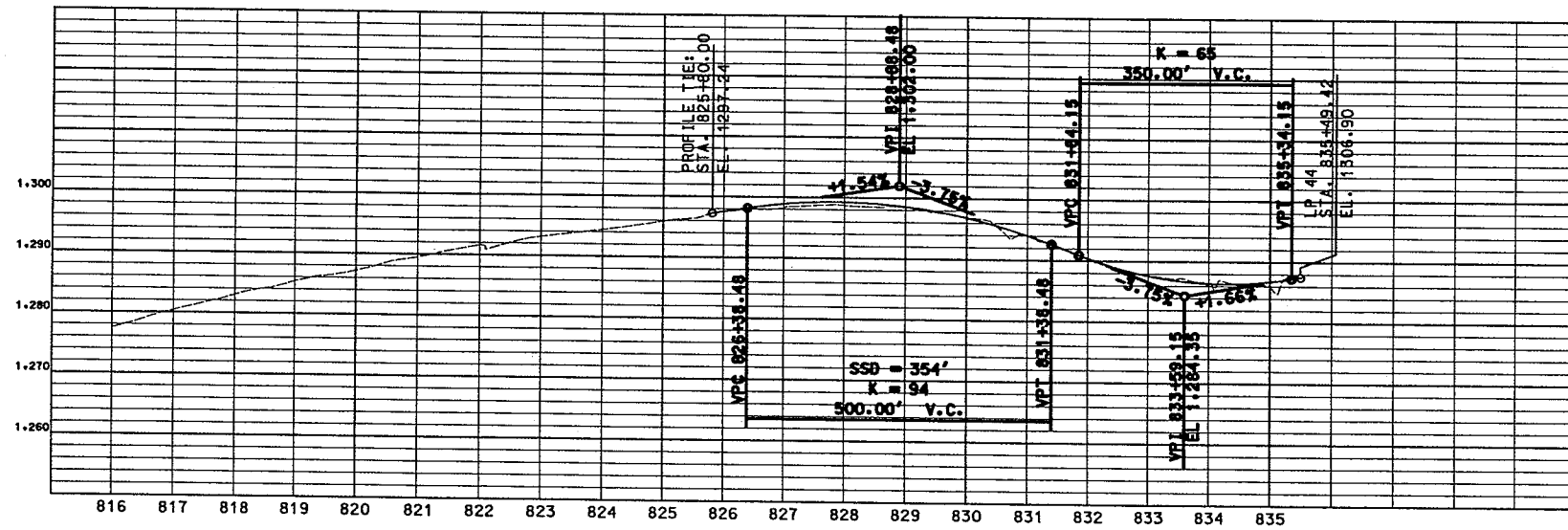
ROUTE	STATE	DISTRICT	SHEET NO.
LP44	MO	8	7
JOB NO. J8U0576			
CONTRACT ID.			
PROJECT NO.			
COUNTY LACLEDE			DATE

BL 44

PRELIMINARY PLAN  
SUBJECT TO CHANGE



RTE W



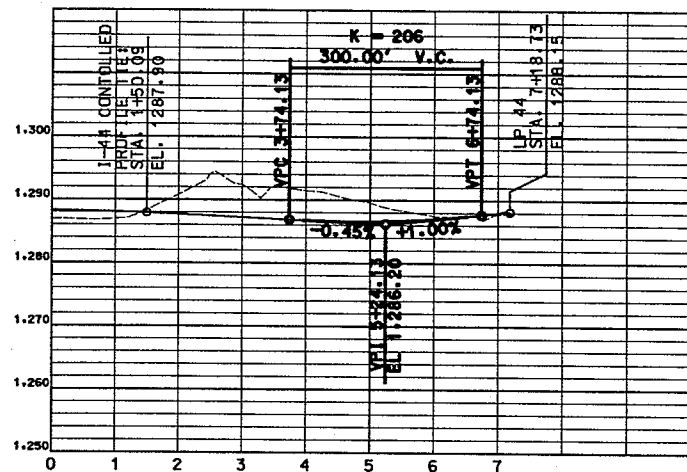
- BENCH MARKS - U.S.G.S. DATUM
- BM#3 EXISTING CHISELED SQUARE ON S. CURB  
ENTRANCE TO HEARTLAND ANTIQUE MALL  
LP 44 STATION 8+36.90, 189.49' RIGHT ELEV. 1295.73
  - BM#4 EXISTING CHISELED SQUARE ON N. CURB  
S. ENTRANCE OF LEBANON CYCLE CENTER  
I-44 STATION 832+75.89, 136.26' RIGHT ELEV. 1293.18
  - BM#6 CHISELED SQUARE ON S. CURB  
AT IVEY LANE AND LP 44  
LP 44 STATION 29+95.37, 46.50' LEFT ELEV. 1291.28

SHEET 1 OF 2

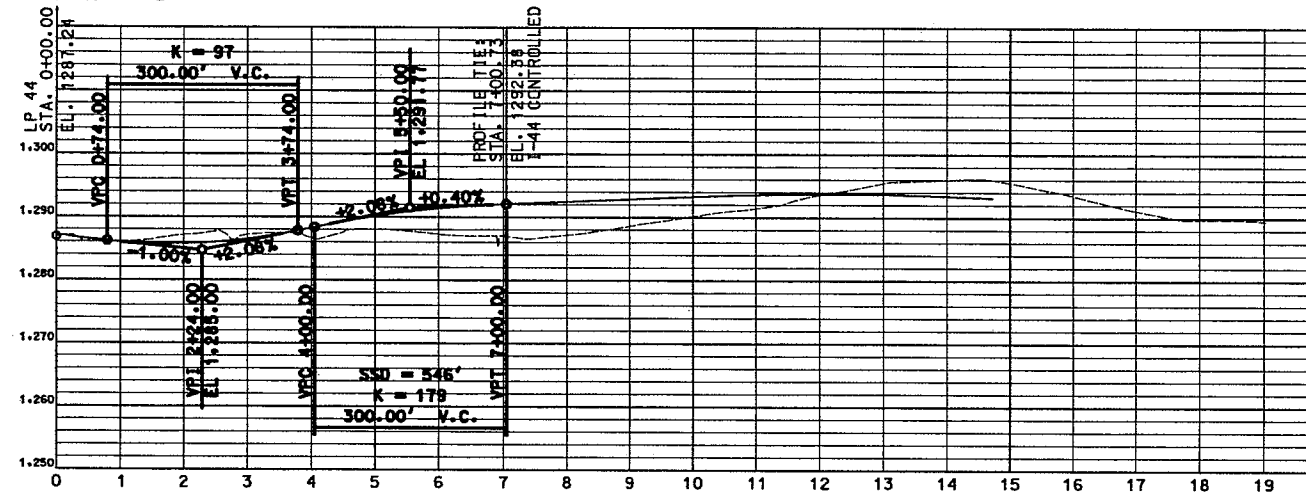
ROUTE	STATE	DISTRICT	SHEET NO.
LP44	MO	8	8
JOB NO. J8U0576			
CONTRACT ID.			
PROJECT NO.			
COUNTY LACLEDE			DATE

PRELIMINARY PLAN  
SUBJECT TO CHANGE

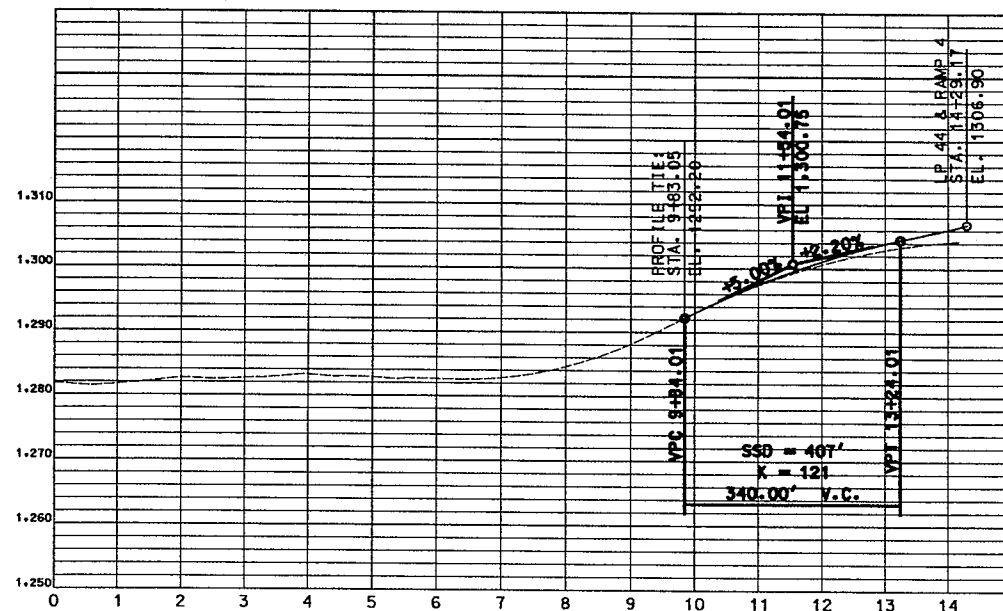
RAMP 1



RAMP 3



RAMP 2



RAMP 4

