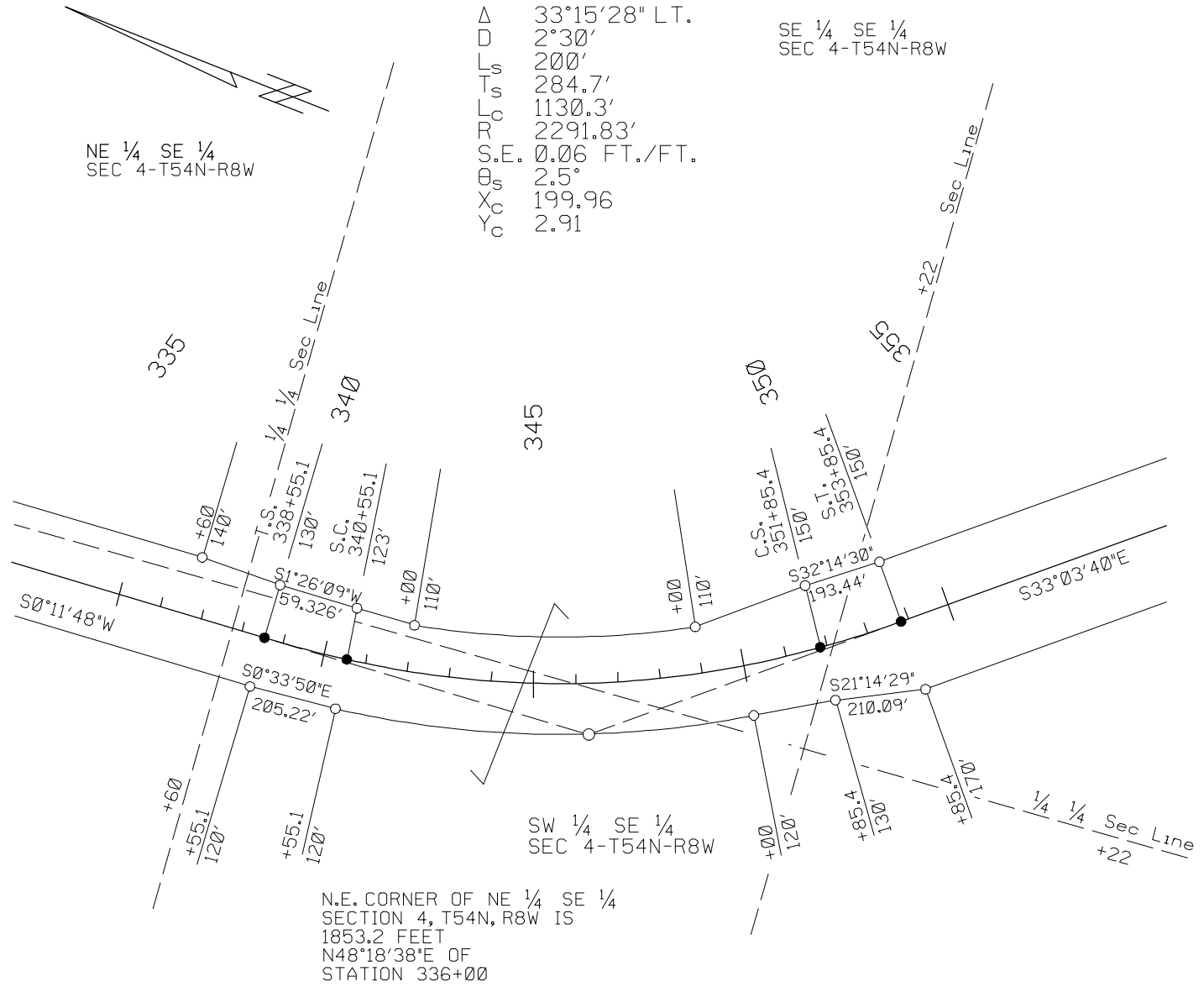


③ STATE OF MISSOURI

P.I. 346+39.7
 Δ 33°15'28" LT.
 D 2°30'
 L_s 200'
 T_s 284.7'
 L_c 1130.3'
 R 2291.83'
 S.E. 0.06 FT./FT.
 θ_s 2.5°
 X_c 199.96
 Y_c 2.91

SE 1/4 SE 1/4
 SEC 4-T54N-R8W

NE 1/4 SE 1/4
 SEC 4-T54N-R8W



③ STATE OF MISSOURI

P.I. 10+558.180
 Δ 33°15'28" LT.
 L_s 60.960
 T_s 239.177
 L_c 344.515
 R_c 698.55
 $S.F.$ 0.006 m/m
 θ_s 2.5°
 X_c 60.948
 Y_c 0.887

SE 1/4 SE 1/4
 SEC 4-T54N-R8W

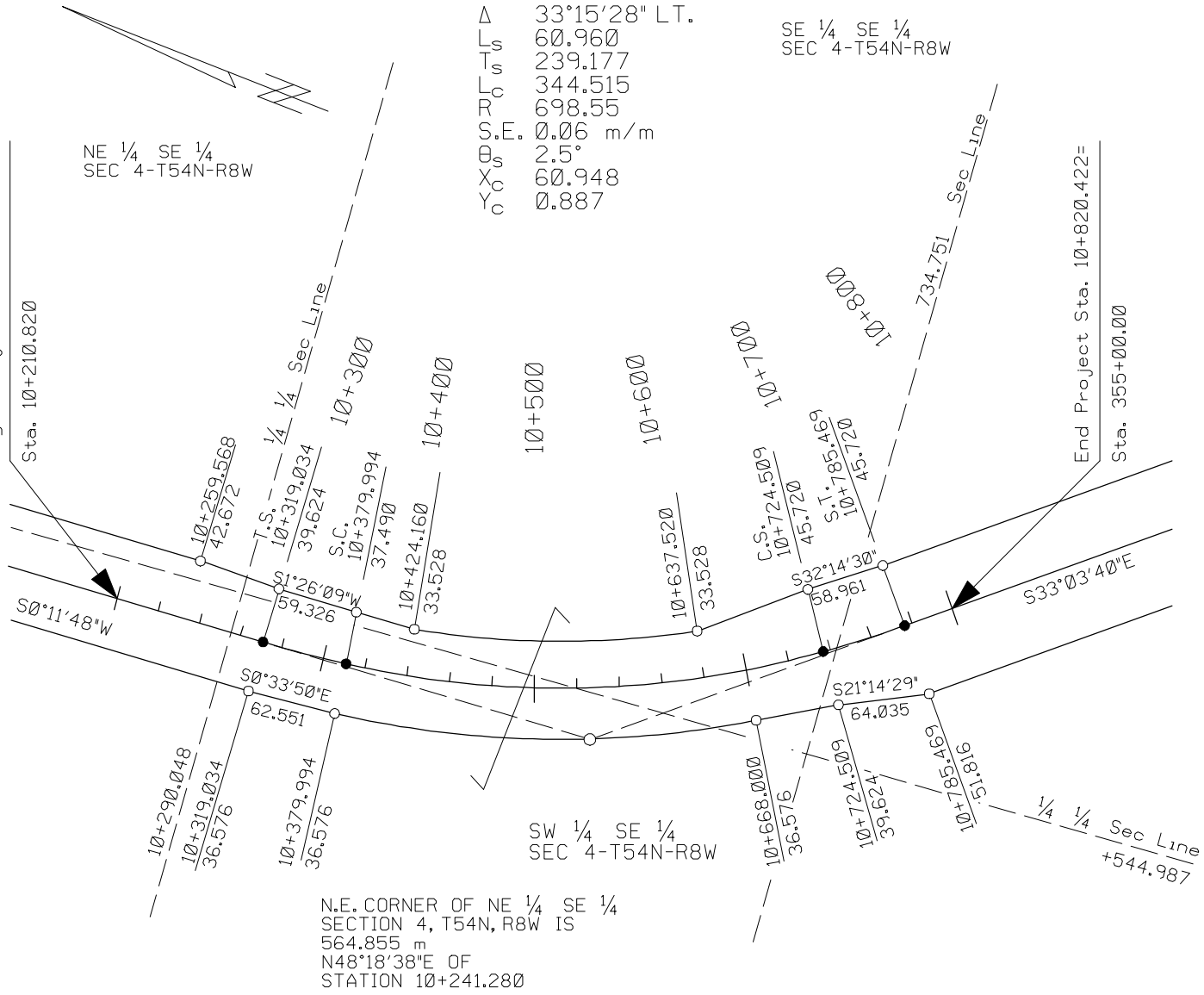
NE 1/4 SE 1/4
 SEC 4-T54N-R8W

Begin Project Sta. 335+00.00=

Sta. 10+210.820

End Project Sta. 10+820.422=

Sta. 355+00.00



N.E. CORNER OF NE 1/4 SE 1/4
 SECTION 4, T54N, R8W IS
 564.855 m
 N48°18'38"E OF
 STATION 10+241.280

Figure 7